

PREPARED BY: DGR ENGINEERING, 1302 S. UNION STREET, P.O. BOX 511, ROCK RAPIDS, IOWA 51246 (712) 472-2531

UNITED STATES PUBLIC LAND SURVEY CORNER CERTIFICATE  
OFLand Survey Monuments situated in Section 25, Township 102, Range 43, of the Fifth Principal Meridian, NOBLES County, MINNESOTA.

## Monument Description and Remarks:

W.1/4 CORNER-DUG WITH BACKHOE AND AT A DEPTH OF 3.5'±, FOUND A STONE, 10 INCHES HIGH, 6 INCHES AT BASE, AND

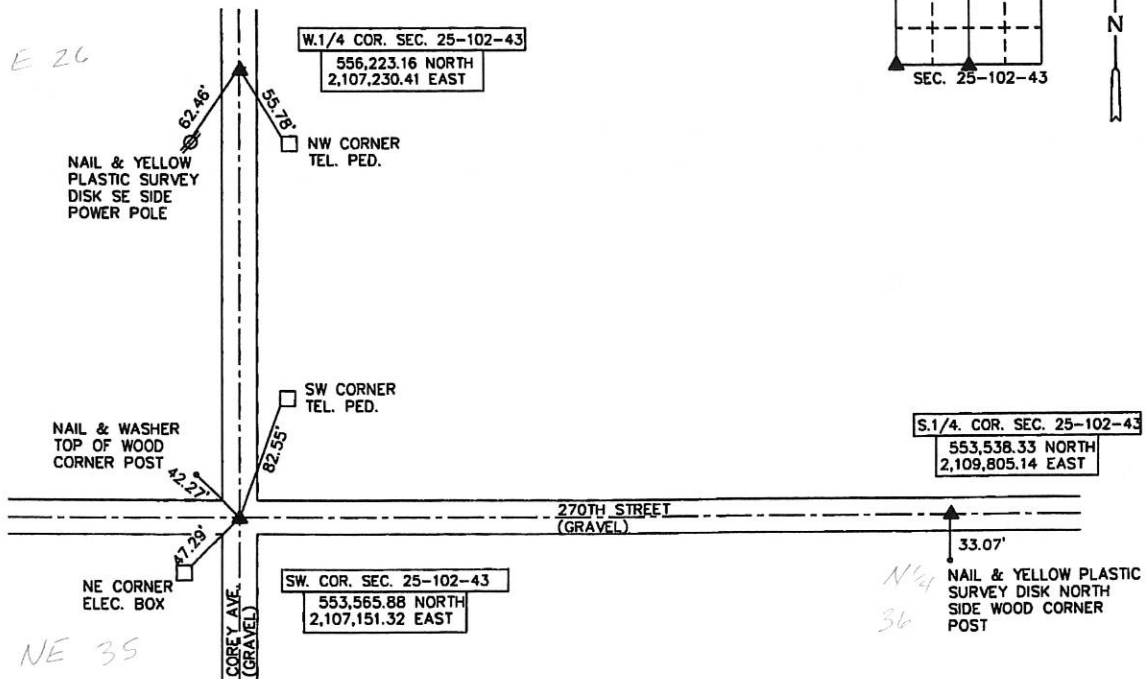
COMING TO A POINT ON TOP, NEAR C.L. N-S GRAVEL ROAD AND ABOUT 3 FEET NORTH OF FENCELINE WEST.

SET 1/2" X 30" REBAR WITH YELLOW SURVEYOR I.D. CAP NO. 17518 OVER THE STONE AND LEFT AT A DEPTH

OF ABOUT 6 INCHES.

SW CORNER-FOUND 5/8" REBAR WITH ORANGE CAP NO. 22461 NEAR C.L.-C.L. GRAVEL INTERSECTION, 6 INCHES DEEPS.1/4 CORNER-FOUND 5/8" REBAR WITH ORANGE CAP NO. 22461 NEAR C.L. GRAVEL ROAD, 1.5 INCHES DEEP

## PLAN - VIEW

COORD'S SHOWN  
ARE MINNESOTA SPC,  
SOUTH ZONE, US FOOT  
NAD 83 (1996)

I hereby certify that this land surveying document was prepared and the related survey work was performed by me or under my direct personal supervision and that I am a duly licensed Land Surveyor under the laws of the State of Minnesota.

Signature: Kevin D. Jongerius  
Name typed or printed: KEVIN D. JONGERIUS

Date: AUGUST 1, 2013 LIC. No. 17518

SEAL



Corners	List Corners to be Indexed	Section	Twp	Range
SW COR.	25	102	43	
S.1/4 COR.	25	102	43	
W.1/4 COR.	25	102	43	