

CERTIFICATE OF LOCATION OF GOVERNMENT CORNER

SOUTH 1/4 Corner of Section 15, Township 102N, Range 43W, 5TH P.M.

STATE OF MINNESOTA, County of NOBLES

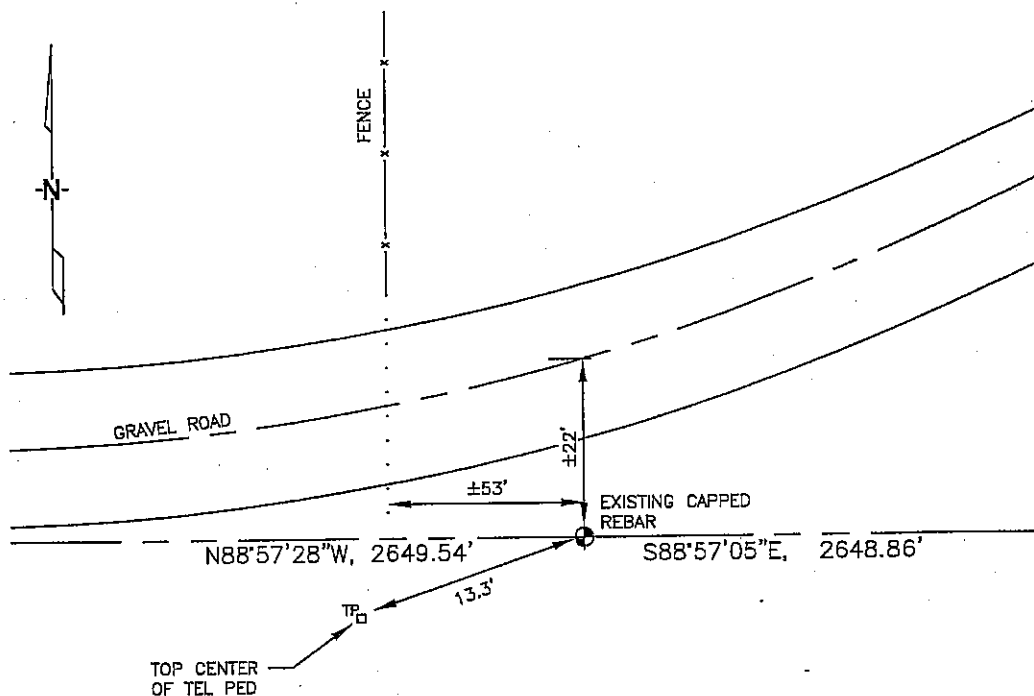
At the corner location shown on the sketch :

☒ On 2/28/2006 found A REBAR WITH AN UNREADABLE CAP.

☒ left monument as found, ☐ lowered monument, ☐ removed monument (explain)

☐ On _____ set _____

Sketch of reference ties



N: 564,374.02
E: 2,099,607.72
MN SOUTH, NAD 83
NOT TO SCALE

Statement of evidence relative to this corner location is on back page

I hereby certify that this document and the data contained herein was prepared by me or under my direct supervision.

Thomas J. Zoff 05/11/06
Signature Date
Registration No. 44563

☒ Land Surveyor, ☐ Professional Engineer

☐ County Surveyor, ☐ County Engineer

OFFICE OF THE COUNTY RECORDER

County of _____

I hereby certify that this document was filed in the Co. Records office at _____ M. on the day of _____ A.D., 20

County Recorder _____

By _____, Deputy

DOCUMENT NO. _____

STATEMENT OF EVIDENCE:

SOUTH 1/4 CORNER, SECTION 15, T. 102 N., R. 43 W.,
NOBLES COUNTY, MINNESOTA

- 1869 R.H.L. Jewett, US. Deputy Surveyor, monumented corner.
- 10/7/1980 Nobles Co. Highway Dept. found nothing.
- 2/28/2006 Ulteig Engineers, Inc. Survey Crew, Dennis Lavallie Party Chief, found
a rebar with an unreadable cap.
Ties: N-22'± to existing C/L of gravel road;
SW-13.3' to top, center of telephone pedestal;
W-53'± to prolongation of fence line running north;
E-2648.86' to SE corner, Section 15;
W-2649.54' to SW corner, Section 15.