

CERTIFICATE OF LOCATION OF GOVERNMENT CORNER

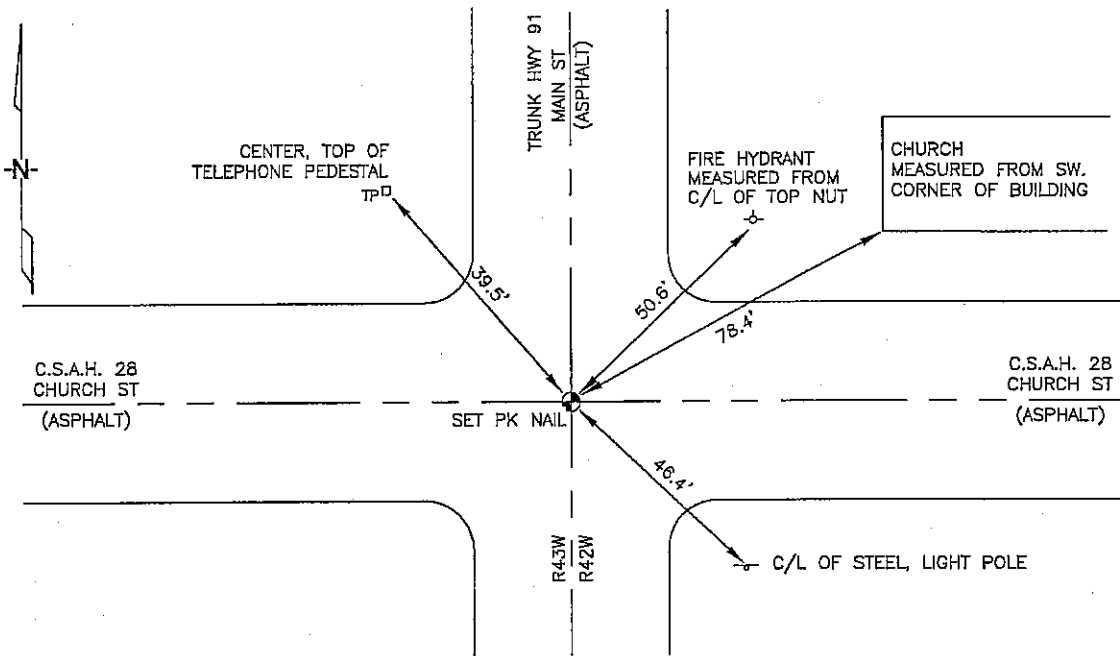
SOUTHEAST Corner of Section 13, Township 102N, Range 43W, 5TH P.M.

STATE OF MINNESOTA, County of NOBLES

At the corner location shown on the sketch :

- On _____ found _____
- left monument as found, lowered monument, removed monument (explain)
- On 2/28/2006 set A PK NAIL IN ASPHALT PAVEMENT AT C/L OF INTERSECTION, ABOVE OUTLINE OF MANHOLE.

Sketch of reference ties



N: 564,069.29
E: 2,112,853.04
MN SOUTH, NAD 83

Statement of evidence relative to this corner location is on back page

I hereby certify that this document and the data contained herein was prepared by me or under my direct supervision.

Thomas V. Zeff

Thomas V. Zeff
Registration No. 44563 Date 5/18/06

- Land Surveyor, Professional Engineer
- County Surveyor, County Engineer

OFFICE OF THE COUNTY RECORDER

County of _____

I hereby certify that this document was filed in the Co. Recorders office at _____ .M. on the day of _____ A.D. , 20

County Recorder _____
By _____, Deputy

DOCUMENT NO. _____

STATEMENT OF EVIDENCE:

SOUTHEAST CORNER, SECTION 13, T. 102 N., R. 43 W.,
NOBLES COUNTY, MINNESOTA

- 1869 R.H.L. Jewett, US. Deputy Surveyor, monumented corner.
- 1891 Nobles Co. found stone, no ties.
- 1902 Nobles Co. found stone, no ties.
- 1911 Nobles Co. found stone, no ties.
- 1917 Nobles Co. found stone, no ties.
- 1941 MN DOT R/W Map for Trunk Road No. 91, indicates corner to be at intersection of Church & Main Sts., in the City of Adrian, MN.
- 3/09/2006 Ulteig Engineers, Inc., Survey Crew, Dennis Lavallie Party Chief, found nothing. Set a PK nail in C/L of intersection, above outline of manhole.
Ties: NE-50.6' to top nut of fire hydrant;
NE-78.4' to SW corner of church;
SE-46.4' to c/l of steel post for street light;
NW-39.5' to top, center, of telephone pedestal.