

CERTIFICATE OF LOCATION OF GOVERNMENT CORNER

SOUTHWEST Corner of Section 18, Township 102N, Range 43W, 5TH P.M.

STATE OF MINNESOTA, County of NOBLES

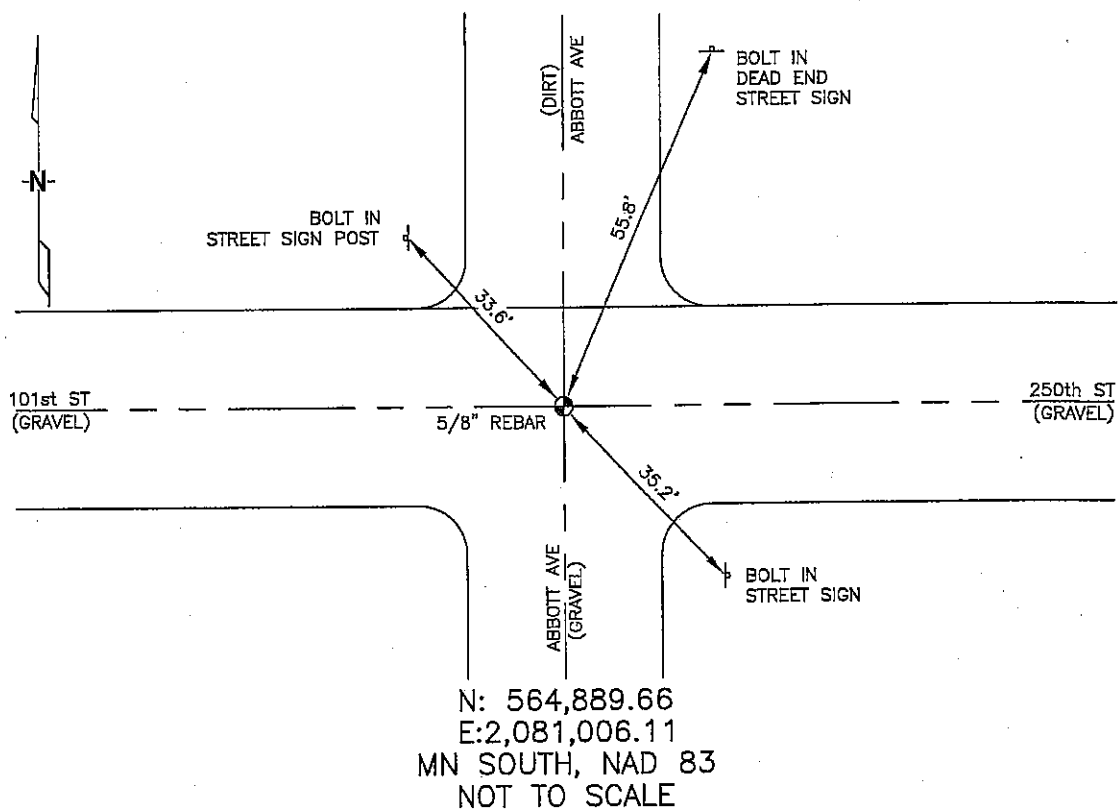
At the corner location shown on the sketch :

☒ On 2/27/2006 found A 5/8" REBAR IN GRAVEL AT INTERSECTION.

☒ left monument as found, ☐ lowered monument, ☐ removed monument (explain)

☐ On _____ set _____

Sketch of reference ties



Statement of evidence relative to this corner location is on back page

I hereby certify that this document and the data contained herein was prepared by me or under my direct supervision.

Thomas V. Zeff 5/11/06
Thomas V. Zeff Date
Registration No. 44563

☒ Land Surveyor, ☐ Professional Engineer
☐ County Surveyor, ☐ County Engineer

OFFICE OF THE COUNTY RECORDER

County of _____

I hereby certify that this document was filed in the Co. Records office at _____ .M. on the day of _____ A.D. , 20

County Recorder _____
By _____, Deputy

DOCUMENT NO. _____

STATEMENT OF EVIDENCE:

SOUTHWEST CORNER, SECTION 18, T. 102 N., R. 43 W.,
NOBLES COUNTY, MINNESOTA

- 1869 R.H.L. Jewett, US. Deputy Surveyor, monumented corner.
- 1900 Nobles Co. Highway Dept. found a stone, no ties.
- 1961 Nobles Co. Highway Dept. found stone & placed a wood stake on top of stone, no ties.
- 1963 MN DOT R/W Map for I-90, calls for a spike in place at intersection of roads going north, south, east & west.
- 2/27/2006 Ulteig Engineers, Inc., Survey Crew, Dennis Lavallie Party Chief found a 5/8" rebar in gravel at the intersection.
Ties: NE-55.8' to bolt in steel, Dead End Street Sign;
SE-35.2' to bolt in steel, Street Sign;
NW-33.6' to bolt in Street Sign post.