

CERTIFICATE OF LOCATION OF GOVERNMENT CORNER

SOUTHWEST Corner of Section 14, Township 102N, Range 43W, 5TH P.M.

STATE OF MINNESOTA, County of NOBLES

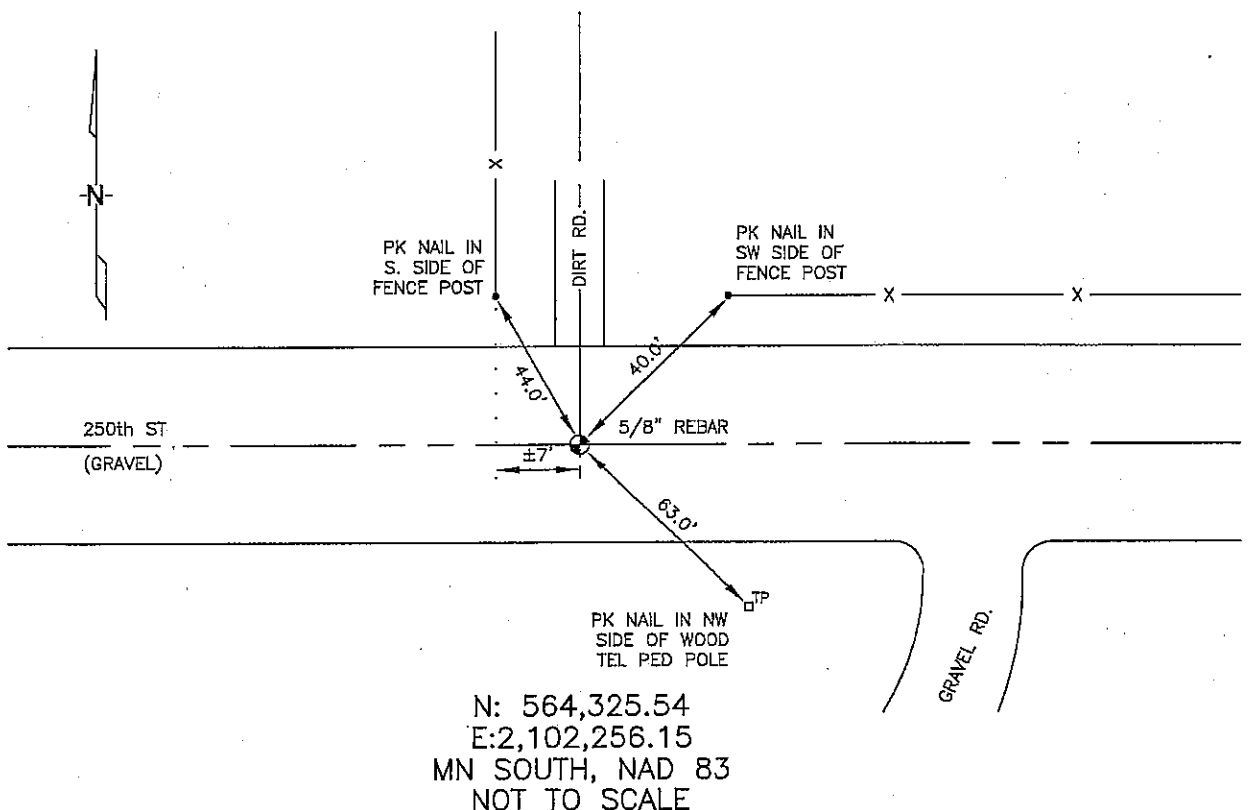
At the corner location shown on the sketch :

☒ On 2/27/2006 found A 5/8" REBAR, IN GRAVEL ROAD.

☒ left monument as found, ☐ lowered monument, ☐ removed monument (explain)

☐ On _____ set _____

Sketch of reference ties



Statement of evidence relative to this corner location is on back page

I hereby certify that this document and the data contained herein was prepared by me or under my direct supervision.

Thomas V. Zeff 5/11/06
 Thomas V. Zeff Date
 Registration No. 44563

☒ Land Surveyor, ☐ Professional Engineer

☐ County Surveyor, ☐ County Engineer

OFFICE OF THE COUNTY RECORDER

County of _____

I hereby certify that this document was filed in the Co. Recorders office at _____ M. on the _____ day of _____ A.D. , 20____

County Recorder _____
 By _____, Deputy

DOCUMENT NO. _____

STATEMENT OF EVIDENCE:

SOUTHWEST CORNER, SECTION 14, T. 102 N., R. 43 W.,
NOBLES COUNTY, MINNESOTA

- 1869 R.H.L. Jewett, US. Deputy Surveyor, monumented corner.
- 1897 Nobles Co. Highway Dept. found stone, no ties.
- 1941 Nobles Co. Highway Dept. set an iron pin, no ties.
- 1963 MN DOT R/W Map for I-90, calls for corner to be at intersection of roads, north & east, being 2526.5' south from I-90 C/L at POT Sta.1294+79.33.
- 10/7/1980 Nobles Co. Highway Dept. found iron pin, 3" down.
Ties: SE-63.0' nail & disc in underground telephone cable marker;
S-39.45' nail & disc in corner of fence post;
NW-44.08' nail & disc in corner of fence post;
NE-41.35' nail & disc in corner of fence post.
- 2/27/2006 Ulteig Engineers, Inc., Survey Crew, Dennis Lavallie Party Chief, found a 5/8" rebar in gravel road.
Ties: NW-44.0' to PK Nail in S side of wood fence post;
NE-40.0' to PK Nail in SW side of wood fence post;
SE-63.0' to PK Nail in SW side of telephone pedestal pole.