

PREPARED BY: DGR ENGINEERING, 1302 S. UNION STREET, P.O. BOX 511, ROCK RAPIDS, IOWA 51246 (712) 472-2531

UNITED STATES PUBLIC LAND SURVEY CORNER CERTIFICATE  
OFLand Survey Monuments situated in Section 35, Township 102, Range 43, of the Fifth Principal Meridian, NOBLES County, MINNESOTA.

## Monument Description and Remarks:

N.1/4 CORNER-DUG WITH BACKHOE AND AT A DEPTH OF 6", FOUND A STONE, 4 INCHES HIGH, 3 INCHES WIDE.

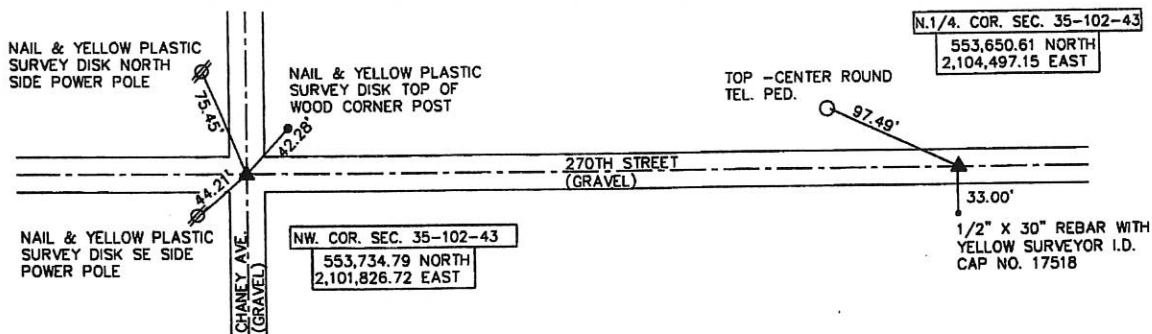
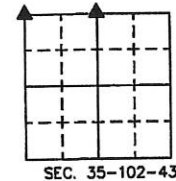
NEAR C.L. E-W GRAVEL ROAD AND IN LINE WITH FENCE SOUTH. LEFT STONE IN PLACE AND

SET 1/2" X 15" REBAR WITH YELLOW SURVEYOR I.D. CAP NO. 17518 ALONG NORTH EDGE OF THE STONE.

REBAR ABOUT 6 INCHES DEEP.

NW CORNER-DUG WITH BACKHOE AND AT A DEPTH OF ABOUT 3', FOUND OLD WOOD REMNANTS NEAR C.L.-C.L. INTERSECTION.NO STONE WAS FOUND. SET 1/2" X 15" REBAR WITH YELLOW SURVEYOR I.D. CAP NO. 17518 AT THE LOCATION  
OF THE WOOD SHAVINGS AND LEFT AT A DEPTH OF ABOUT 6 INCHES.

## PLAN - VIEW

COORD'S SHOWN  
ARE MINNESOTA SPC,  
SOUTH ZONE, US FOOT  
NAD 83 (1996)

I hereby certify that this land surveying document was prepared and the related survey work was performed by me or under my direct personal supervision and that I am a duly licensed Land Surveyor under the laws of the State of Minnesota.

Signature: Kevin D. Jongerius  
Name typed or printed: KEVIN D. JONGERIUSDate: NOVEMBER 14, 2013 LIC. No. 17518

SEAL



Corners	Section	Twp	Range
NW COR.	35	102	43
N.1/4 COR.	35	102	43