

# CERTIFICATE OF LOCATION OF GOVERNMENT CORNER

NE CORNER OF SECTION 16 TOWNSHIP, 102 RANGE, 43 5TH P.M.

STATE OF MINNESOTA, COUNTY OF NOBLES COUNTY

AT THE CORNER LOCATION SHOWN ON THE SKETCH

☒ ON 09-23-05 FOUND A 5/8" REBAR NORTH OF CENTERLINE OF HIGHWAY 35

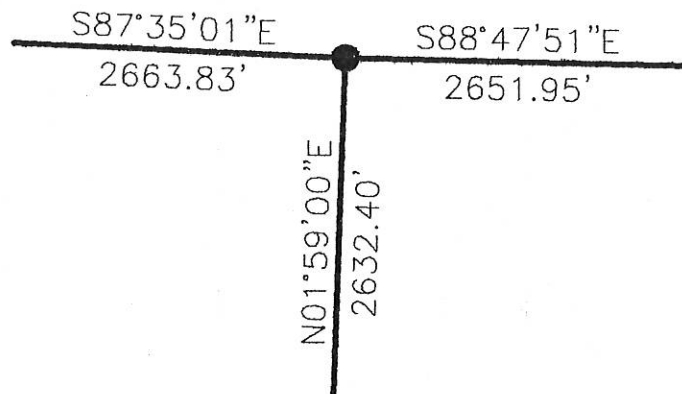
☒ LEFT MONUMENT AS FOUND ☐ LOWERED MONUMENT ☐ REMOVED MONUMENT (EXPLAIN)

☐ ON \_\_\_\_\_ PLACED A \_\_\_\_\_

## SECTION CORNER COORDINATES

NORTHING 569707.510  
EASTING 2097124.647

## SKETCH OF REFERENCE



COORDINATES ARE NAD '83 US STATE PLANE MINNESOTA SOUTH

NGS BENCHMARK I.D. OP0642  
NORTHING 568802.729  
EASTING 2113000.747

NGS BENCHMARK I.D. QQ0109  
NORTHING 567380.177  
EASTING 2089063.587

STATEMENT OF EVIDENCE RELATIVE TO THIS CORNER LOCATION IS ON PAGE 2.

I HEREBY CERTIFY THAT THIS DOCUMENT AND THE DATA CONTAINED HEREIN WAS PREPARED BY ME OR UNDER MY DIRECT SUPERVISION.

Steven B. Kor  
SIGNATURE

2/2/06  
DATE

MN. LICENSE NO. 22461

☒ LAND SURVEYOR

☐ COUNTY SURVEYOR

☒ PROFESSIONAL ENGINEER  
REGISTERED PROFESSIONAL ENGINEER  
22461  
STEVEN B. KOR  
MINNESOTA

OFFICE OF THE COUNTY RECORDER

I HEREBY CERTIFY THAT THIS DOCUMENT WAS FILED IN THE COUNTY RECORDERS OFFICE

AT \_\_\_\_\_ ON THE \_\_\_\_\_ DAY OF \_\_\_\_\_

COUNTY RECORDER \_\_\_\_\_

DEPUTY \_\_\_\_\_

DOCUMENT NO. \_\_\_\_\_