

# CERTIFICATE OF LOCATION OF GOVERNMENT CORNER

NE CORNER OF SECTION 18 TOWNSHIP, 102 RANGE, 43 5TH P.M.

STATE OF MINNESOTA, COUNTY OF NOBLES COUNTY

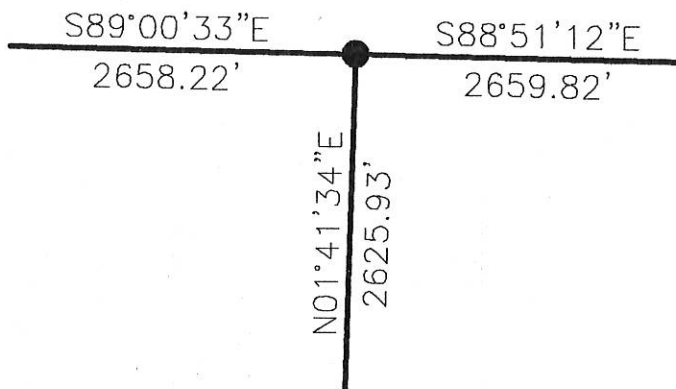
AT THE CORNER LOCATION SHOWN ON THE SKETCH

☒ ON 09-28-05 FOUND A 5/8" REBAR IN INTERSECTION OF HIGHWAY 35 AND  
AHLERS AVENUE  
☒ LEFT MONUMENT AS FOUND    ☐ LOWERED MONUMENT    ☐ REMOVED MONUMENT (EXPLAIN)  
☐ ON \_\_\_\_\_ PLACED A \_\_\_\_\_

## SECTION CORNER COORDINATES

NORTHING 570038.556  
 EASTING 2086485.846

## SKETCH OF REFERENCE



COORDINATES ARE NAD '83 US STATE PLANE MINNESOTA SOUTH

NGS BENCHMARK I.D. OP0642  
 NORTHING 568802.729  
 EASTING 2113000.747

NGS BENCHMARK I.D. QQ0109  
 NORTHING 567380.177  
 EASTING 2089063.587

STATEMENT OF EVIDENCE RELATIVE TO THIS CORNER LOCATION IS ON PAGE 2.

I HEREBY CERTIFY THAT THIS DOCUMENT AND THE DATA CONTAINED HEREIN WAS PREPARED BY ME OR UNDER MY DIRECT SUPERVISION.

Steven B. Kor  
 SIGNATURE

2/2/06  
 DATE

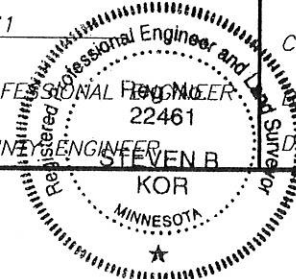
MN. LICENSE NO. 22461

☒ LAND SURVEYOR

☐ COUNTY SURVEYOR

☒ PROFESSIONAL ENGINEER

☐ COUNTY ENGINEER



OFFICE OF THE COUNTY RECORDER

I HEREBY CERTIFY THAT THIS DOCUMENT WAS FILED IN THE COUNTY RECORDERS OFFICE

AT \_\_\_\_\_ ON THE \_\_\_\_\_ DAY OF \_\_\_\_\_

COUNTY RECORDER

DEPUTY

DOCUMENT NO. \_\_\_\_\_