

CERTIFICATE OF LOCATION OF GOVERNMENT CORNER

WEST 1/4 Corner of Section 18, Township 102N, Range 43W, 5TH P.M.

STATE OF MINNESOTA, County of NOBLES

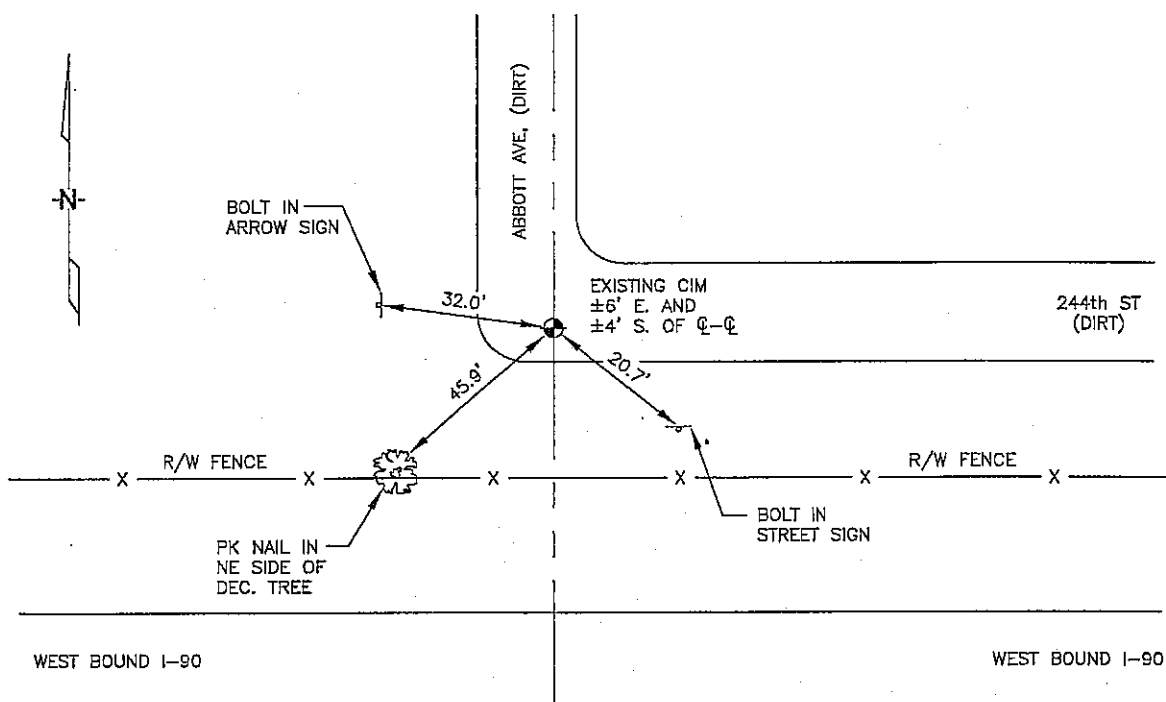
At the corner location shown on the sketch :

☒ On 2/28/2006 found A CAST IRON MONUMENT IN DIRT ROAD.

☒ left monument as found, ☐ lowered monument, ☐ removed monument (explain)

☐ On _____ set _____

Sketch of reference ties



N: 567,508.17
E: 2,081,078.14
MN SOUTH, NAD 83
NOT TO SCALE

Statement of evidence relative to this corner location is on back page

I hereby certify that this document and the data contained herein was prepared by me or under my direct supervision.

Thomas V. Zeff
Thomas V. Zeff

5/11/06
Date

Registration No. 44563

☒ Land Surveyor, ☐ Professional Engineer

☐ County Surveyor, ☐ County Engineer

OFFICE OF THE COUNTY RECORDER

County of _____

I hereby certify that this document was filed in the Co. Records office at _____ M. on the day of _____ A.D. , 20

County Recorder _____
By _____, Deputy

DOCUMENT NO. _____

STATEMENT OF EVIDENCE:

WEST 1/4 CORNER, SECTION 18, T. 102 N., R. 43 W.,
NOBLES COUNTY, MINNESOTA

- 1869 R.H.L. Jewett, US. Deputy Surveyor, monumented corner.
- 1963 MN DOT R/W Map for I-90, calls for a spike in place at intersection of roads, going north, south & east.
- 2/28/2006 Ulteig Engineers, Inc. Survey Crew, Dennis Lavallie Party Chief, found a cast iron monument, in the dirt road.
Ties: SE-20.7' to bolt in steel, Street Sign;
SW-45.9' to PK Nail in NE side of deciduous tree;
NW-32.0' to bolt in steel, Arrow Sign, post.