

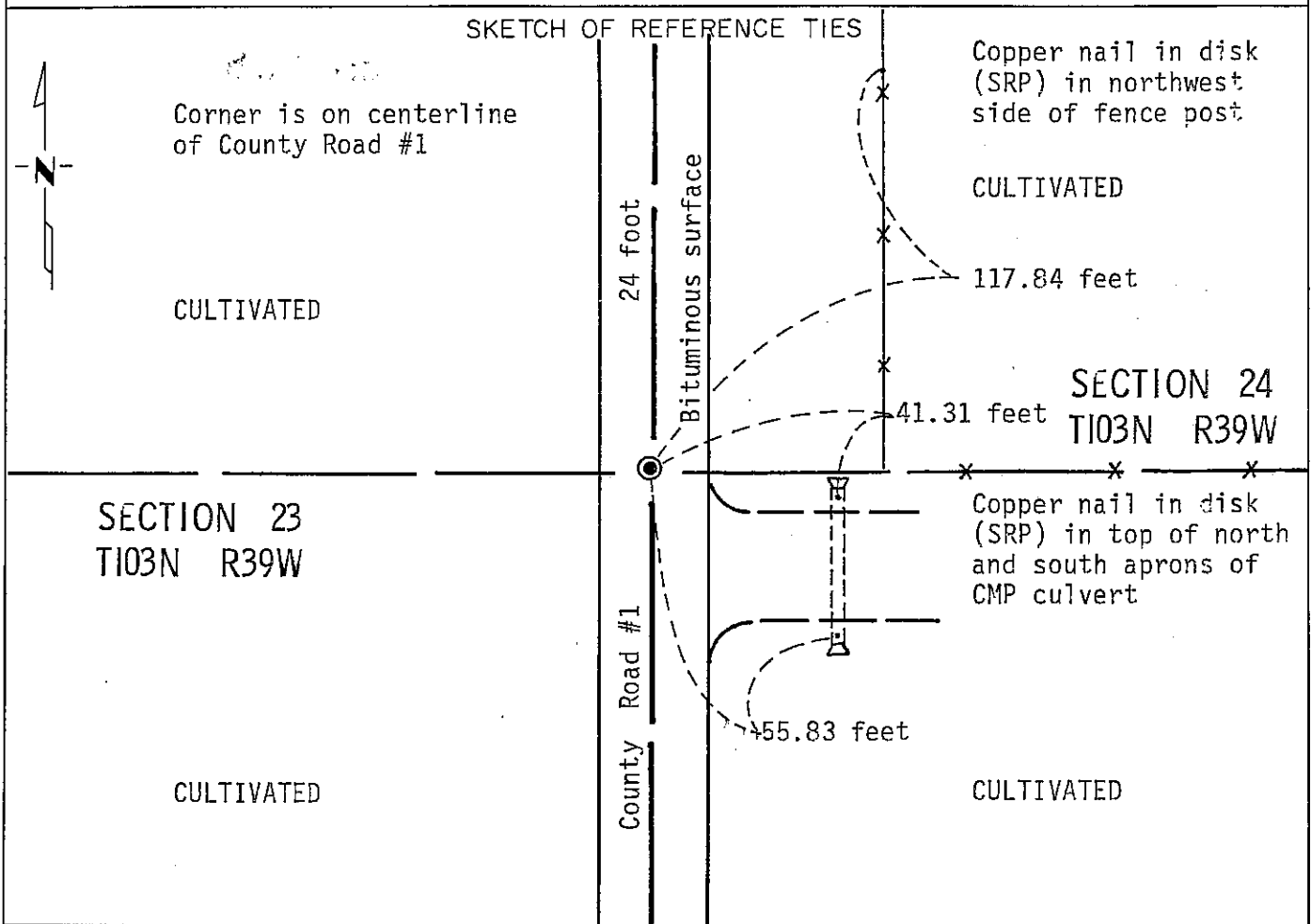
CERTIFICATE OF LOCATION OF GOVERNMENT CORNER

EAST QUARTER Corner of Section 23, Township 103N, Range 39W, 5 P.M.

STATE OF MINNESOTA, County of NOBLES

At the corner location shown on the sketch:

- On Nov. 2, 1990 found a bridge spike down about 4.0 inches below the bituminous surface (See Statement of Evidence)
 left monument as found, lowered monument, removed monument (explain)
- On _____ placed a _____



Statement of evidence relative to this corner location is on back of page.

I hereby certify that this document and the data contained herein was prepared by me or under my direct supervision.

Allan E. Schoon 11-19-92
SIGNATURE DATE

Registration No. 11858

- Land Surveyor, Professional Engineer
- County Surveyor, County Engineer

OFFICE OF THE COUNTY RECORDER

County of Nobles

I hereby certify that this document was filed in the Co. Recorders office at 9:00 A. .M. on the 20th day of January A.D., 1993

County Recorder Jane Howard

By _____, Deputy

DOCUMENT NO. 250859

Statement of Evidence: East Quarter Corner of Section 23, T103N, R39W, 5th P.M.

- Aug. 28, 1868 The original Public Land Survey was run in 1868 by Deputy Surveyor Richard H. L. Jewett and his notes read, "Set post in mound with pits for $\frac{1}{4}$ Sec Corner".
- 1976 Nobles County Highway Department records indicate an iron pin was placed.
- Nov. 2, 1990 A Minnesota Department of Transportation field survey crew, consisting of R. Busse, D. Janke, B. Ostman and M. Johnson, found a bridge spike based on Nobles County Highway Department records and ties. The bridge spike is about 4 inches below the bituminous surface and on the centerline of Nobles County Road #1.

The origin of the bridge spike could not be determined, but an analysis of old survey records and occupation lines of long standing indicate that the in-place bridge spike is at a reasonable location for the corner.

For additional information, including field measurements and photographs, contact the Minnesota Department of Transportation in Windom.