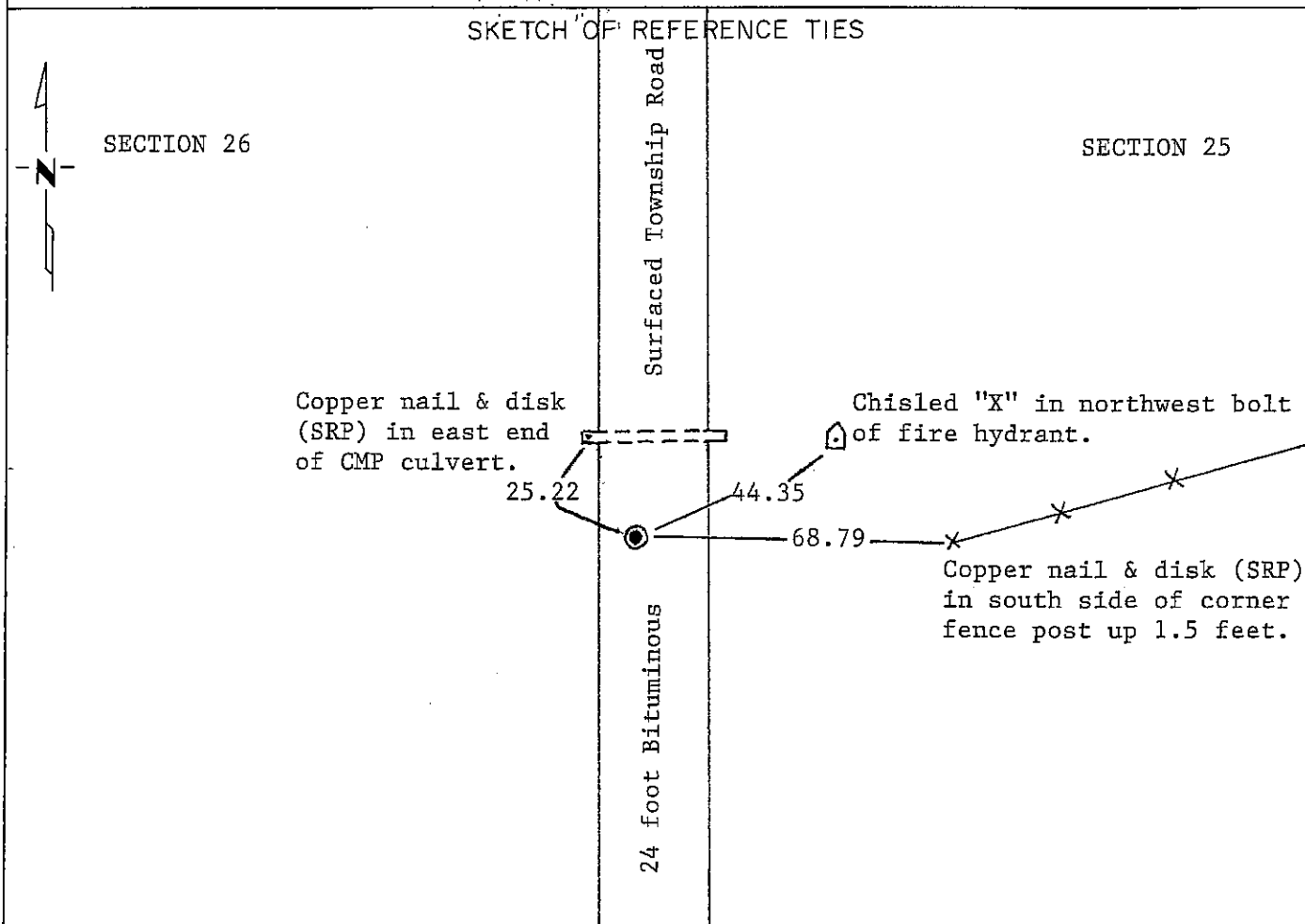


CERTIFICATE OF LOCATION OF GOVERNMENT CORNER
EAST QUARTER Corner of Section 26, Township 103N, Range 39W, 5 P.M.
 STATE OF MINNESOTA, County of NOBLES

At the corner location shown on the sketch:

- On Aug. 25, 1989 found a 1/2 inch by 30 inch (approximately) iron rod down 0.1 foot below grade near area of corner. Nothing found below iron rod.
DATE
- left monument as found, lowered monument, removed monument (explain)
- On _____ placed a _____
DATE



Statement of evidence relative to this corner location is on back of page.

I hereby certify that this document and the data contained herein was prepared by me or under my direct supervision.

Allan E. Schom 11-19-92
SIGNATURE DATE

Registration No. 11858
 Land Surveyor, Professional Engineer
 County Surveyor, County Engineer

OFFICE OF THE COUNTY RECORDER
 County of Nobles

I hereby certify that this document was filed in the Co. Recorders office at 9:20 A. M. on the 20th day of January A.D., 1993

County Recorder James Howard

By _____, Deputy

DOCUMENT NO. 250863

Statement of Evidence: East Quarter Corner of Section 26, T103N, R39W, 5th P.M.

- Aug. 27, 1868 The original Public Land Survey was run in 1868 by Deputy Surveyor Richard H. L. Jewett and his notes read, "Set post in mound with pits for $\frac{1}{4}$ Section Corner".
- June 16, 1900 M.S. Smith, Nobles County Surveyor, did a survey of Section 26 and his plat shows a "stone".
- Oct. 24, 1902 M.S. Smith, Nobles County Surveyor, survey plat shows "stone".
- May 29, 1912 William A. Saxon, Nobles County Surveyor, did a survey of Section 26 and his plat states "could not find the stone of record at this time, set iron rod at $\frac{1}{4}$ corner, set iron rod on W $\frac{1}{16}$ corner of S.W. $\frac{1}{4}$ of 25-103-39.
- Feb. 27, 1914 William A. Saxon, Nobles County Surveyor, shows on a plat an "iron post".
- Aug. 25, 1989 A Minnesota Department of Transportation survey crew consisting of Roger Busse, Dan Flatgard, Vern Lien and Gene Menken dug for the corner and found an $\frac{1}{2}$ inch by 30 inch (approximately) iron rod down 0.1 foot below grade near the area of the corner. They found nothing below the iron rod.

The in-place location of the iron rod is compatible with the occupation lines within the section. An analysis of the Statement of Evidence and the field measurements indicate that the iron rod is in a reasonable location. I therefore accept the monument as the perpetuation of the corner location as established by William A. Saxon in 1912.

For additional information, including field measurements and photographs, contact the Minnesota Department of Transportation in Windom.