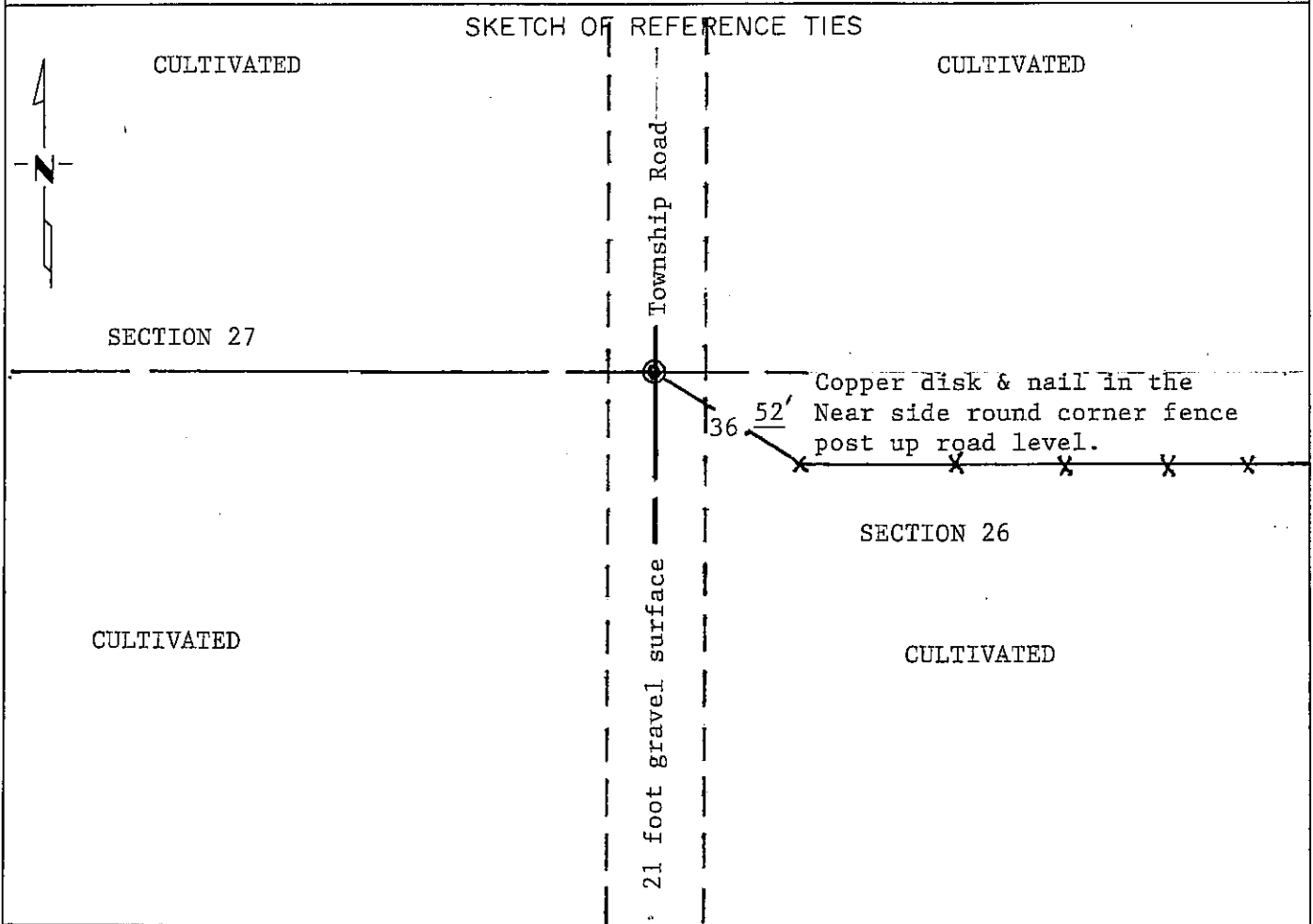


CERTIFICATE OF LOCATION OF GOVERNMENT CORNER
EAST QUARTER Corner of Section 27, Township 103N, Range 39W, 5th P.M.
 STATE OF MINNESOTA, County of NOBLES

At the corner location shown on the sketch:

- On Oct. 10, 1989 found a 8 inch by 10 inch by 12 inch stone about 3 feet below natural ground at approximately clay line 4 feet below gravel surface.
DATE
- left monument as found, lowered monument, removed monument (explain)
- On Oct. 10, 1989 placed a 3/4 inch diameter by 24 inch iron pin down 0.5 foot below road surface directly over stone.
DATE



Statement of evidence relative to this corner location is on back of page.

I hereby certify that this document and the data contained herein was prepared by me or under my direct supervision.

Allan E. Schoon 1-07-93
SIGNATURE DATE

Registration No. 11858

- Land Surveyor, Professional Engineer
- County Surveyor, County Engineer

OFFICE OF THE COUNTY RECORDER

County of Nobles

I hereby certify that this document was filed in the Co. Recorders office at 9:30 A.M. on the 20th day of January, A.D., 1993

County Recorder James Howard

By _____, Deputy

DOCUMENT NO. 250865

Statement of Evidence: East Quarter Corner of Section 27, T103N, R39W, 5th P.M.

- Aug. 29, 1868 The original Public Land Survey was run in 1868 by Deputy Surveyor Richard H. L. Jewett, and his notes read, "set post in mound with pits for $\frac{1}{4}$ sec. corner".
- Apr. 21, 1987 Tim Bell, of Bell Engineering, RLS #16093, did a survey in Section 27 and his notes indicate he dug at the corner and found nothing.
- Aug. 24, 1989 A Minnesota Department of Transportation survey crew consisting of Roger Busse, Marcia Johnson and Gene Menken, dug at the lost location a hole 21 feet by 13 feet by 3.5 feet deep on the occupation line and found nothing.
- Oct. 10, 1989 A Minnesota Department of Transportation survey crew consisting of Roger Busse, Marcia Johnson and Gene Menken, dug at the lost location a hole 16 feet north and south and 8.5 feet east and west. They found an 8 inch by 10 inch by 12 inch stone about 3 feet below natural ground at the approximate clay line 4 feet below the gravel surface. The stone is about 3 feet west and $1\frac{1}{2}$ feet south of the lost location, about 20 feet north of an occupation line and 1 foot west of the centerline of the township road. They placed a $\frac{3}{4}$ inch diameter by 24 inch iron pin down 0.5 foot below the road surface directly over the stone.

An analysis of the Statement of Evidence and the field measurements indicate that the stone is in a reasonable location from the lost location site. I therefore accept the stone as the corner location.

For additional information, including field measurements and photographs, contact the Minnesota Department of Transportation in Windom.