

CERTIFICATE OF LOCATION OF GOVERNMENT CORNER

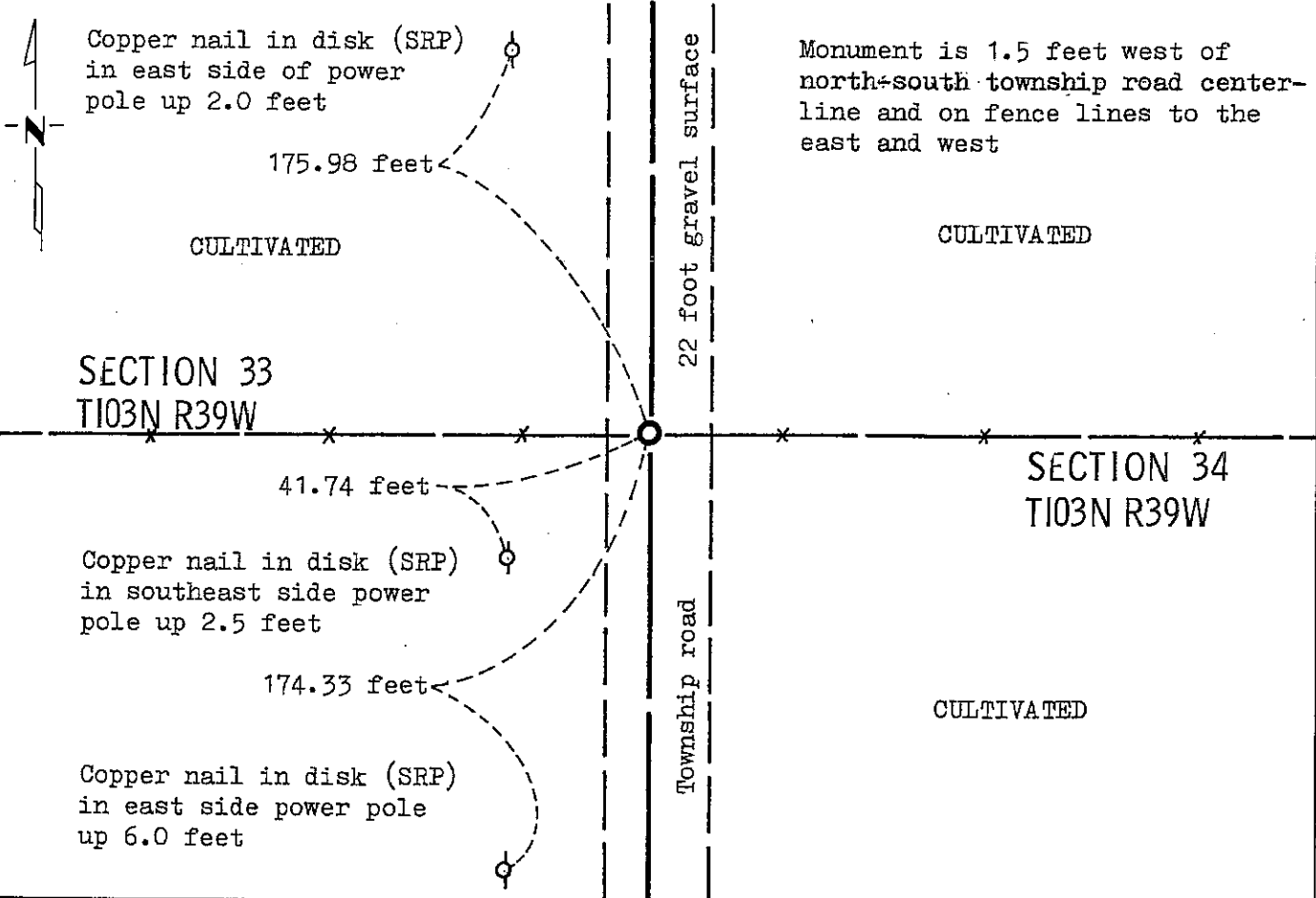
EAST QUARTER Corner of Section 33, Township 103N, Range 39W, 5 P.M.

STATE OF MINNESOTA, County of NOBLES

At the corner location shown on the sketch:

- On Aug. 22, 1989 found a 10 inch by 10 inch by 7.5 inch stone 18 inches below
DATE
gravel surface
 - left monument as found, lowered monument, removed monument (explain)
- On Aug. 22, 1989 placed a Minnesota Department of Transportation cast iron
DATE
monument 6 inches below gravel surface

SKETCH OF REFERENCE TIES



Statement of evidence relative to this corner location is on back of page.

I hereby certify that this document and the data contained herein was prepared by me or under my direct supervision.

Allan E. Schorn 3-14-91
SIGNATURE DATE

Registration No. 11858
 Land Surveyor, Professional Engineer
 County Surveyor, County Engineer

OFFICE OF THE COUNTY RECORDER

County of Nobles

I hereby certify that this document was filed in the Co. Recorders office at 8:35 A.M. on the 13th day of September A.D., 1991

County Recorder James Howard

By _____, Deputy

DOCUMENT NO. 245438

Statement of Evidence: East Quarter Corner Section 33 T103N R39W 5th P.M.

- Aug. 29, 1868 The original Public Land Survey was run in 1868 by Deputy Surveyor Richard H. L. Jewett, and his notes read: "Set post in mound with pits for $\frac{1}{4}$ sec. cor."
- 1901 Nobles County Highway Department records indicate a stone in 1901.
- Oct. 30, 1902 A survey plat by M. S. Smith, Nobles County Surveyor, reads: "Original stake set stone".
- 1902 Nobles County Highway Department records indicate a stone in 1902.
- Sept. 6, 1912 William A. Saxon, Nobles County Surveyor, indicates on his survey plat that he found the stone.
- 1912 Nobles County Highway Department records indicate a stone in 1912.
- Aug. 22, 1989 A Minnesota Department of Transportation field survey crew, consisting of R. Busse, K. Janovsky, M. Johnson and G. Menken, searched for the corner using a tractor mounted backhoe. During the course of their excavation, they found a 10 inch by 10 inch by 7.5 inch stone with no visible markings down 18 inches below the gravel road surface. They lowered the stone to 3.1 feet below the gravel road surface to accommodate the placement of a Minnesota Department of Transportation Public Land Survey Monument.

The stone, set by M. S. Smith, in his survey of October 30, 1902, is accepted as the perpetuation of the original Public Land Survey corner.

For additional information, including measurements and photographs, contact the Minnesota Department of Transportation in Windom, Minnesota.