

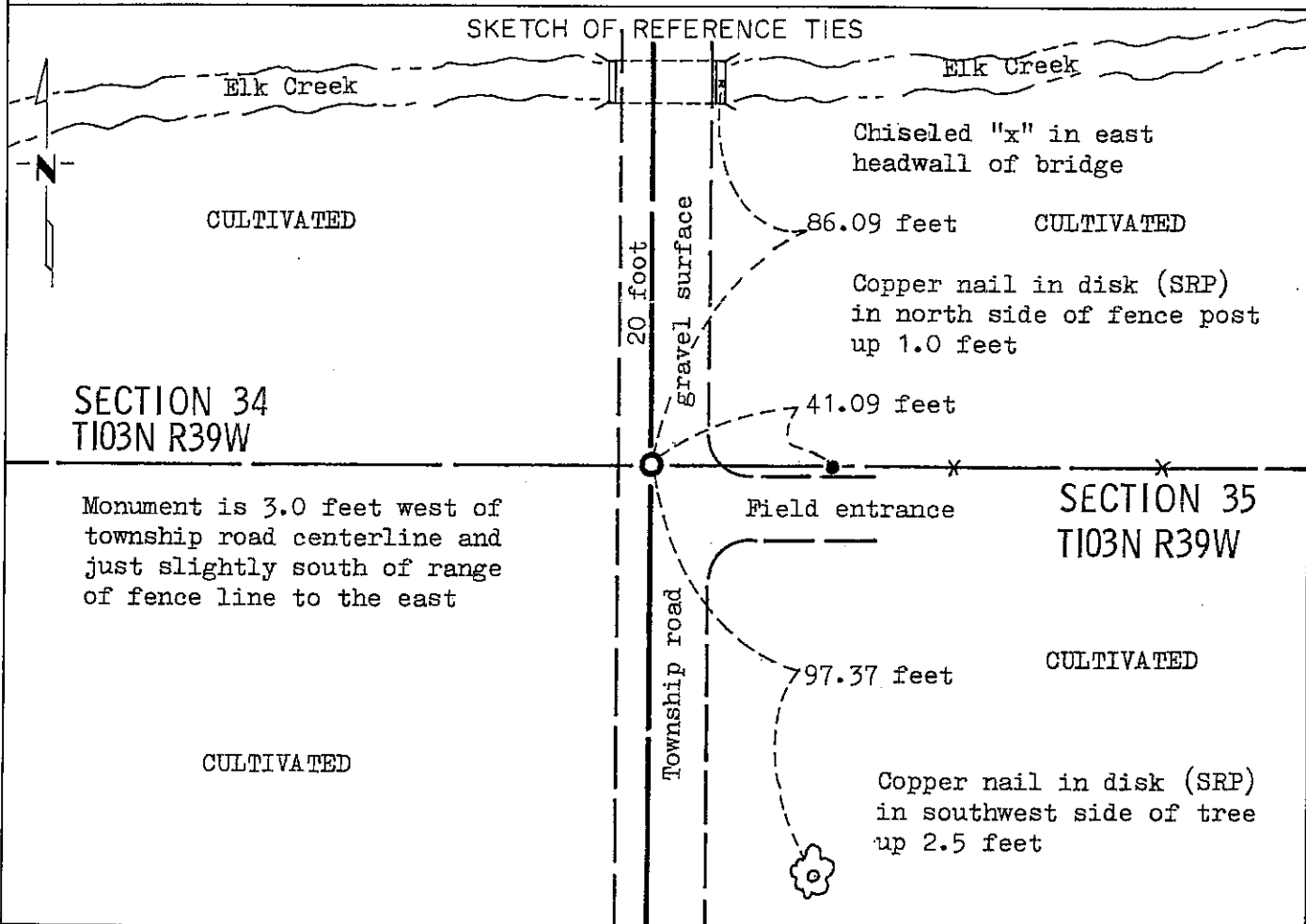
# CERTIFICATE OF LOCATION OF GOVERNMENT CORNER

EAST QUARTER Corner of Section 34, Township 103N, Range 39W, 5 P.M.

STATE OF MINNESOTA, County of NOBLES

At the corner location shown on the sketch:

- On Aug. 23, 1989 found a PLS monument #16093 down 5 inches over a 13 inch by 10 inch by 7 inch stone down 35 inches over another stone (See statement of evidence)
  - left monument as found,  lowered monument,  removed monument (explain)
- On Aug. 23, 1989 placed a Minnesota Department of Transportation cast iron monument 4 inches below gravel surface.



Statement of evidence relative to this corner location is on back of page.

I hereby certify that this document and the data contained herein was prepared by me or under my direct supervision.

Allan E. Schorn 3-14-91  
 SIGNATURE DATE

Registration No. 11858

Land Surveyor,  Professional Engineer

County Surveyor,  County Engineer

OFFICE OF THE COUNTY RECORDER  
County of Nobles

I hereby certify that this document was filed in the Co. Recorders office at 8:45 A.M. on the 12th day of September A.D., 19 91

County Recorder Jasper Howard

By \_\_\_\_\_, Deputy

DOCUMENT NO. 245440

Statement of Evidence: East Quarter Corner Section 34 T103N R39W 5th P.M.

- Aug. 29, 1868 The original Public Land Survey was run in 1868 by Deputy Surveyor Richard H. L. Jewett and his notes read: "Set post in mound with pits for  $\frac{1}{4}$  sec. corner".
- Oct. 30, 1902 A plat by M. S. Smith, Nobles County Surveyor, indicates a stone.
- 1902 Nobles County Highway Department records indicate a stone.
- June 15, 1934 Gebo, a Minnesota Highway Department field crew chief, excavated a hole 7 feet by 4 feet by 3 feet deep, but found no evidence of the corner. He assumed the corner at the centerline of the road and fence lines.
- Circa, 1987 Notes by Tim Bell, Registered Land Surveyor #16093, read: "3' down large stone, found no "x", west of centerline, south of fence line, place small rebar beside rock, placed  $\frac{1}{2}$ " rebar 18" long over point w/Bell cap, 2' west of centerline".
- Aug. 23, 1989 A Minnesota Department of Transportation field crew, consisting of R. Busse, M. Johnson and G. Menken, searched for the corner using a tractor mounted backhoe. During the course of their excavation, they found a rebar and stones. The upper stone, having no visible markings and measuring 13 inches by 10 inches by 7 inches, was down 35 inches and appeared to have been disturbed during a previous excavation. The lower stone did not have any visible markings measuring 14 inches by 14 inches by 7 inches, was down 50 inches below the road surface. The center of the stone was used as the corner. The upper stone was replaced directly over the lower stone and the rebar was removed to accommodate the placement of a Minnesota Department of Transportation Public Land Survey Monument over the two stones, and as a perpetuation of the rebar set by Tim Bell in 1987.

The origin of the stones could not be determined, but an analysis of old survey records and occupation lines of long standing indicate that the in-place stones are at a reasonable location for the corner.

For additional information, including measurements and photographs, contact the Minnesota Department of Transportation in Windom, Minnesota.

Tract 44  
 Plots 10  
 Fee NC