

UNITED STATES PUBLIC LAND SURVEY CORNER CERTIFICATE FOR

Land survey monuments situated in Section 1, Township 103 North, Range 39 West, of the Fifth Principal Meridian, Nobles County, Minnesota..

Previously recorded in N/A in County Recorder's Office.

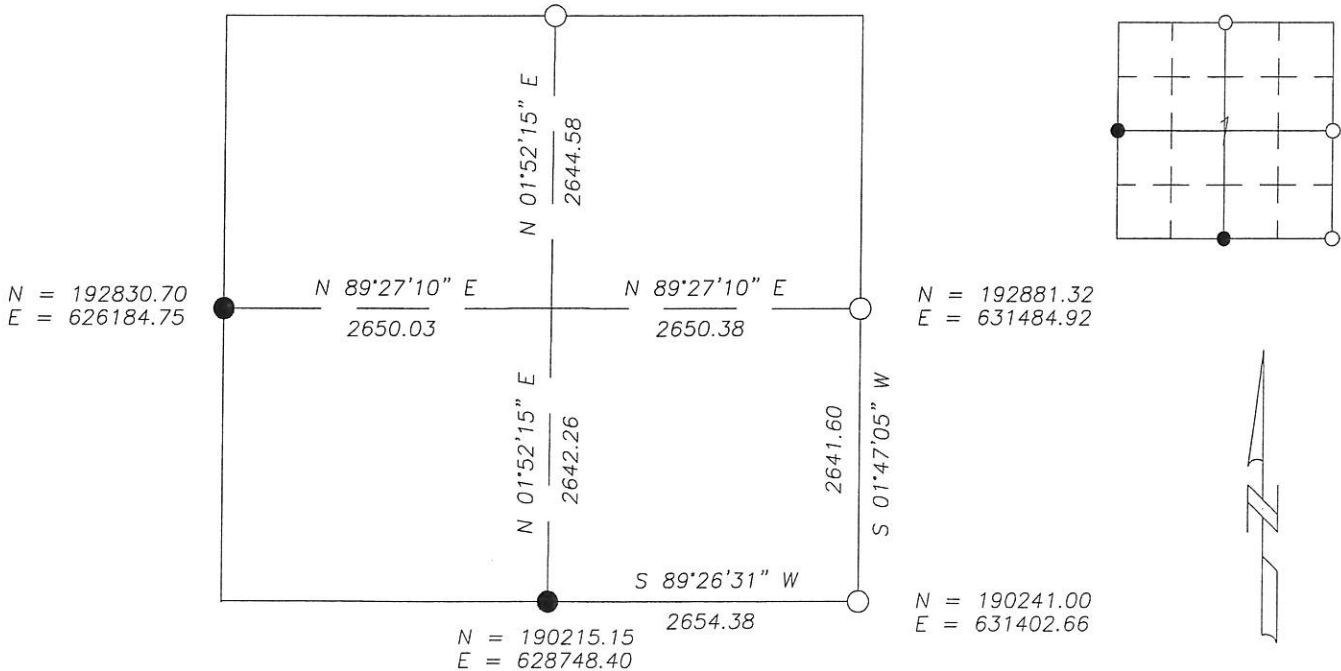
(Show reason for preparing this certificate, the evidence and detailed procedure used in establishing the corner position & monumentation found or placed.)

MONUMENT DESCRIPTION AND REMARKS: On Sept. 9, 2011 we dug with backhoe for North 1/4 Corner and found a 10" stone with high point 1.5' below surface at centerline of road & accepted stone for corner & set a 5/8" Iron Stake with survey cap 23008 over top center of stone. We found a 10" X 12" stone 1.5' below surface at East 1/4 Corner at Centerline of Township Road & accepted stone for corner & set a 5/8" Iron Stake with survey cap 23008 over top center of stone. We found a 15" X 12" stone 2.8' below surface at SE Corner at Centerline of Township Road intersection & accepted stone for corner & set a 5/8" Iron Stake with survey cap 23008 over top center of stone. Nobles County Highway records indicate a stone at North 1/4 Corner in 1902 & no ties; a stone at SE Corner in 1901 with no ties; and nothing for East 1/4 Corner.

NOBLES COUNTY COORDINATES NAD-83 2007

PLAN-VIEW

N = 195499.58
E = 625921.00



I hereby certify that this land surveying document was prepared and related survey work was performed by me or under my direct supervision and that I am a duly licensed Land Surveyor under the laws of the State of Minnesota.

Perry L. Zieske 10-4-11
Signature Date
Perry Zieske
License number 23008

Corners to be Indexed

Corners	Section	Township	Range
N 1/4	1	103	39
E 1/4	1	103	39
SE	1	103	39