

CERTIFICATE OF LOCATION OF GOVERNMENT CORNER

North 1/4 Corner of Section 21, Township 103N, Range 39W, 5th P.M.

STATE OF MINNESOTA, County of Nobles

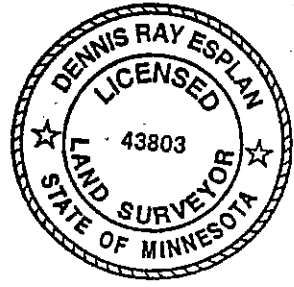
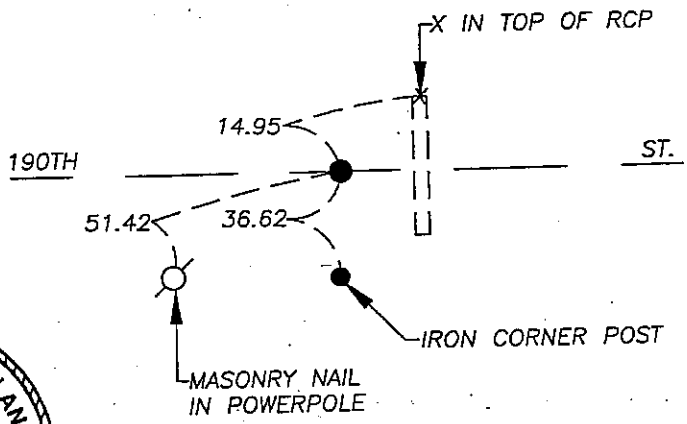
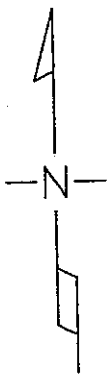
At the corner location shown on the sketch

On 9/16/05 found nothing, excavated with a backhoe and no monument was found.

left monument as found lowered monument, removed monument (explain)

On 10/03/05 placed a 1" iron pipe with red survey cap #43803.

SKETCH OF REFERENCE TIES



NAD 83 (1996)
US STATE PLANE 1983
MN SOUTH
593541.86N
2221968.47E

Statement of evidence relative to this corner location is on page 2.

I hereby certify that this document and the data contained herein was prepared by me or under my direct supervision.

Dennis Ray Esplan 11/04/05
SIGNATURE DATE

MN. LICENSE NO. 43803

- Land Surveyor, Professional Engineer
- County Surveyor, County Engineer

OFFICE OF THE COUNTY RECORDER

I hereby certify that this document was filed in the Co. Recorder's Office at _____ on the

_____ day of _____

County Recorder _____
By _____, Deputy

DOCUMENT NO. _____

Statement of Evidence

1867 Original Township Subdivision was surveyed by T.B. Walker.

Nobles Co. Hwy. Dept. had no history on this corner.

2005 Gerald Vickerman and Jeremy Lund, with Zieske Land Surveying, excavated with a backhoe and found nothing, determined corner to be lost. Placed 1" iron pipe with red survey cap #43803 midway and on line between section corners.



DOCUMENT NUMBER A 306826

Certified, Filed and or Recorded on
NOV. 07, 2005 AT 04:50:00PM

TRACKED _____ COMPARED _____
PHOTO. *LS*
FEE _____

NOBLES COUNTY RECORDER
LYNN M. WILSON
507-372-8216