

306833

CERTIFICATE OF LOCATION OF GOVERNMENT CORNER

North 1/4 Corner of Section 22, Township 103N, Range 39W, 5th P.M.

STATE OF MINNESOTA, County of Nobles

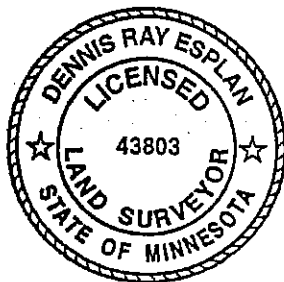
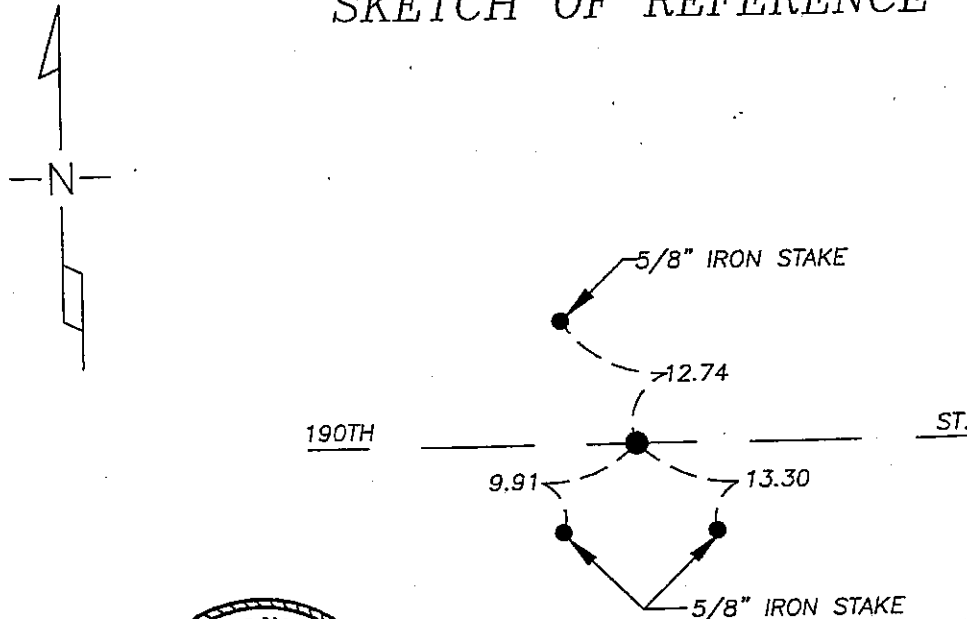
At the corner location shown on the sketch

On 9/16/05 found nothing, excavated with backhoe and determined corner to be lost.

left monument as found lowered monument, removed monument (explain)

On 10/03/05 placed a 1" iron pipe with red survey cap #43803.

SKETCH OF REFERENCE TIES



NAD 83 (1996)
US STATE PLANE 1983
MN SOUTH
593384.58N
2227291.77E

Statement of evidence relative to this corner location is on page 2.

I hereby certify that this document and the data contained herein was prepared by me or under my direct supervision.

Dennis Ray Esplan
SIGNATURE

11/04/05
DATE

MN. LICENSE NO. 43803

Land Surveyor, Professional Engineer
 County Surveyor, County Engineer

OFFICE OF THE COUNTY RECORDER

I hereby certify that this document was filed in the Co. Recorder's Office at _____ on the _____ day of _____

County Recorder _____
By _____, Deputy
DOCUMENT NO. _____

Certified, Filed and or Recorded on
NOV. 07, 2005 AT 05:25:00PM

Statement of Evidence

1868 Original Township Subdivision was surveyed by Jewett & Howe.

Nobles Co. Hwy. Dept had no history on this corner.

2005 Gerald Vickerman PLS and Jeremy Lund, with Zieske Land Surveying, excavated with a backhoe and found nothing, determined corner to be lost. Placed 1" iron pipe with red survey cap #43803 midway and on line between section corners.



DOCUMENT NUMBER A 306833

Certified, Filed and or Recorded on
NOV. 07, 2005 AT 05:25:00PM

Lynn M. Wilson

TRACKED _____
PHOTO *SA*
FEE _____

COMPARED _____

NOBLES COUNTY RECORDER
LYNN M. WILSON
507-372-8216