

CERTIFICATE OF LOCATION OF GOVERNMENT CORNER

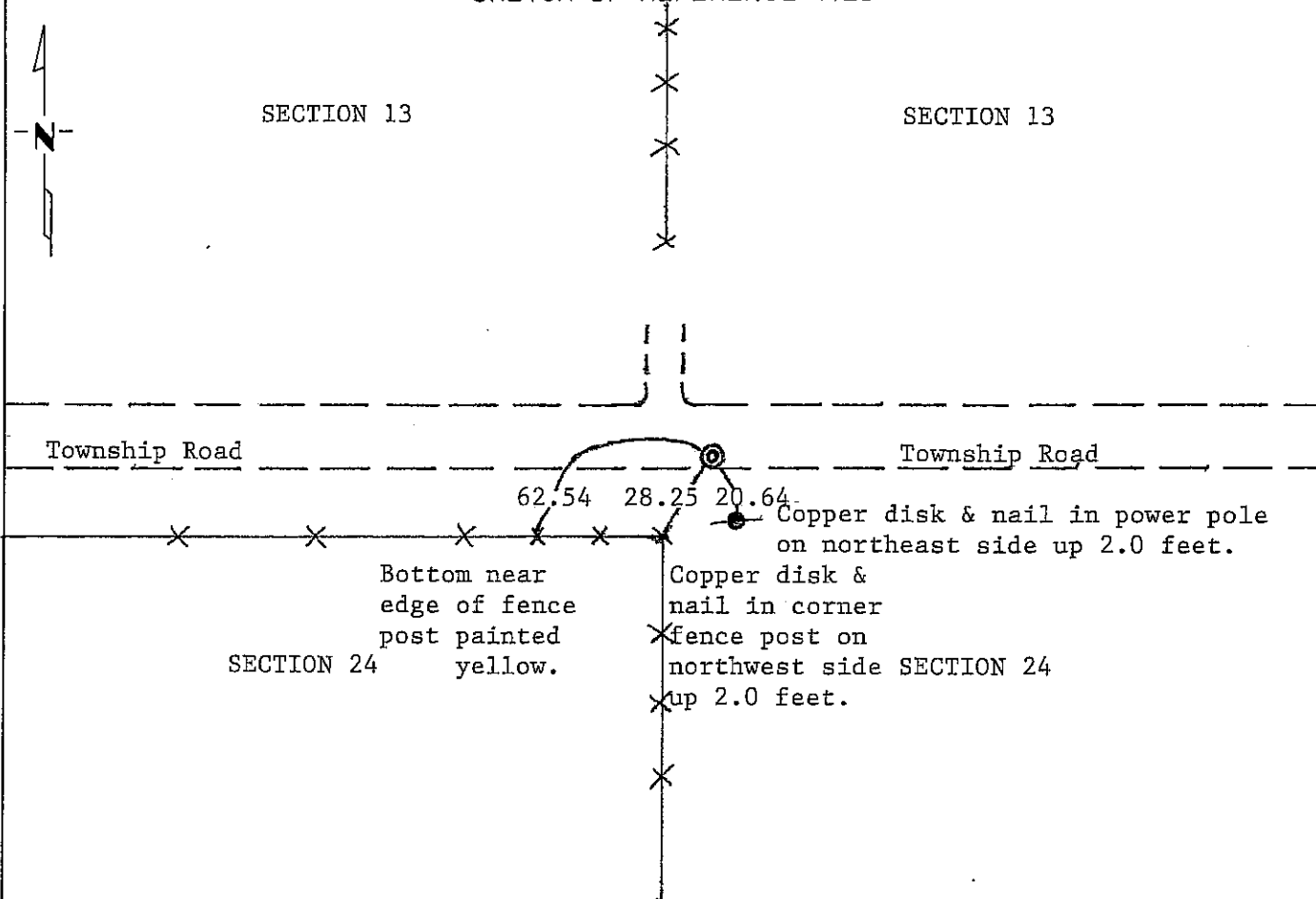
NORTH QUARTER Corner of Section 24, Township 103N, Range 39W, 5 P.M.

STATE OF MINNESOTA, County of NOBLES

At the corner location shown on the sketch:

- On Oct. 9, 1989 found a 5/8 inch by 10 inch iron pin with a 1 3/8 inch square top about 2 1/2 inches below surface. Raised iron pin to 0.5 feet below surface.
 - left monument as found, lowered monument, removed monument (explain)
- On _____ placed a _____

SKETCH OF REFERENCE TIES



Statement of evidence relative to this corner location is on back of page.

I hereby certify that this document and the data contained herein was prepared by me or under my direct supervision.

Allan E. Schorn 11-19-92
SIGNATURE DATE

Registration No. 11858

Land Surveyor, Professional Engineer

County Surveyor, County Engineer

OFFICE OF THE COUNTY RECORDER

County of Nobles

I hereby certify that this document was filed in the Co. Recorders office at 9:05 A. M. on the 20th day of January A.D., 1993

County Recorder Joyce Howard

By _____, Deputy

DOCUMENT NO. 250860

Statement of Evidence: North Quarter Corner of Section 24, T103N, R39W, 5th P.M.

- Aug. 28, 1868 The original Public Land Survey was run in 1868 by Deputy Surveyor Richard H. L. Jewett and his notes read, "Set post in mound with pits for $\frac{1}{4}$ Section Corner".
- Aug. 14, 1989 A Minnesota Department of Transportation survey crew consisting of Roger Busse, George Koens, Terry Knoll and Gene Menken dug a 14 foot by 20 foot hole from the occupation line 11 feet west and 9 feet east and from centerline of the township road 10 feet south and 4 feet north. Found large boulder about 5 feet long and 3 feet wide. No marking on boulder. Too large to be corner. Found nothing else in the search. They dug down to the clay about 4 feet deep.
- Oct. 9, 1989 A Minnesota Department of Transportation survey crew consisting of Roger Busse, Rose Katke, Marcia Johnson and Terry Makovsky dug a hole 14 foot by 9 foot by 6 foot deep at the lost location area. Lost location area is about 7 feet south of centerline of the township road and 16 feet east of the occupation lines. Found a small piece of what looked like original stake laying on it's side a few feet northeast of the lost location. Could not find any other evidence of stake.

The same survey crew dug another hole about 4 feet north, 5 feet south, 6 feet west and 8 feet east of the lost location area. Found a $\frac{5}{8}$ inch diameter by 10 inch iron pin with a $1\frac{3}{8}$ inch square top about $5\frac{1}{2}$ feet south and $1\frac{1}{2}$ feet west of lost location and about $2\frac{1}{2}$ feet below surface. Raised the iron pin to 0.5 feet below the surface of the township road.

The inplace location of the iron pin is compatible with the occupation lines within the section. An analysis of the Statement of evidence and the field measurements indicate that the iron pin is in a reasonable location. I therefore accept the iron pin as the perpetuation of the corner location.

For additional information, including field measurements and photographs, contact the Minnesota Department of Transportation in Windom.