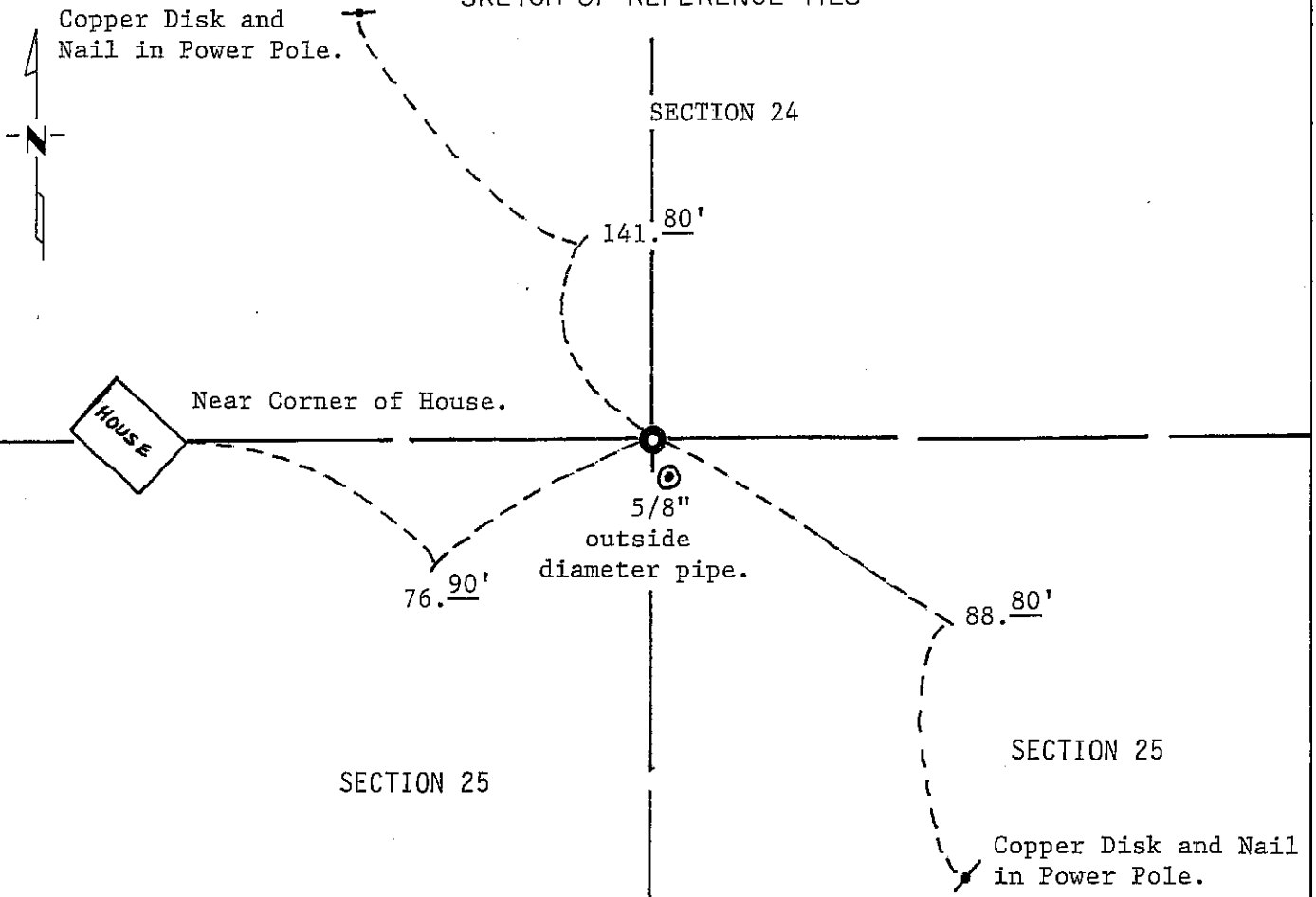


CERTIFICATE OF LOCATION OF GOVERNMENT CORNER
NORTH QUARTER Corner of Section 25, Township 103N, Range 39W, 5th P.M.
 STATE OF MINNESOTA, County of NOBLES

At the corner location shown on the sketch:

- On Nov. 7, 1989 found a 5/8 inch outside diameter by 24 inch iron pipe bent
DATE
over. Replaced monument with exception of 7 inches which broke off.
 left monument as found, lowered monument, removed monument (explain)
- On Dec. 23, 1992 placed a Minnesota Department of Transportation Cast Iron
DATE
Monument down 6 inches below the surface over 5/8 inch iron pin of Sioux
Engineering.

SKETCH OF REFERENCE TIES



Statement of evidence relative to this corner location is on back of page.

I hereby certify that this document and the data contained herein was prepared by me or under my direct supervision.

Allan E. Schow 1-14-93
SIGNATURE DATE

Registration No. 11858

- Land Surveyor, Professional Engineer
- County Surveyor, County Engineer

OFFICE OF THE COUNTY RECORDER
County of Nobles

I hereby certify that this document was filed in the Co. Recorders office at 9:10 A. .M. on the 30th day of January A.D., 19 93

County Recorder Jan Howard

By _____, Deputy

DOCUMENT NO. 250861

Statement of Evidence: North Quarter Corner of Section 25, T103N, R39W, 5th P.M.

- Aug. 27, 1868 The original Public Land Survey was run in 1868 by Deputy Surveyor Richard H. L. Jewett and his notes read, "Set post in mound with pits for $\frac{1}{4}$ sec. corner".
- June 16, 1900 Milton S. Smith, Nobles County Surveyor, did a survey in Section 25 and his plat shows a "stone" at the corner.
- 1900 Nobles County Highway Records show "stone 1900" at the corner.
- Oct. 11, 1976 A survey for Brewster Lumber Company by Sioux Engineering, Survey No. N7605S, by C. Allen Ringquist, RLS #6700, Auditor's Re-Subdivision of Outlot A in the City of Brewster, County of Nobles, indicates the Northeast Corner of Lot #9 and the North Quarter of 25 to be the same corner.
- Nov. 17, 1989 A Minnesota Department of Transportation survey crew consisting of Roger Busse, Dan Flatgard, Mike Murphy and Terry Makovsky, dug a hole with a backhoe 6 feet north, 6 feet south, 3 feet west and 7 feet east with a depth of 3 feet around the lost location site. The crew extended the search by digging another hole 12 feet further south and 2 feet west and 3 feet east of the lost location site. They found no evidence of the corner.
- The same survey crew extended the search and found a $\frac{5}{8}$ inch by 24 inch outside diameter iron pipe bent over on top. The top 7 inches of the pipe broke off when they tried to straighten it. They placed the rest of the pipe ($\frac{5}{8}$ inch by 17 inches) back in its original place 5 inches below the surface. The pipe is about 5 feet east and 21 feet south of the lost location site. No stone was found below the pipe.
- Dec. 23, 1992 A Minnesota Department of Transportation survey crew placed a Minnesota Department of Transportation Cast Iron Monument over the $\frac{5}{8}$ inch iron pin set by Sioux Engineering. The corner was set by Sioux Engineering using obliterated methods. Examination of old survey plats and Nobles County Highway Department records indicate that this is a reasonable location for the corner.

For additional information, including field measurements and photographs, contact the Minnesota Department of Transportation in Windom.