

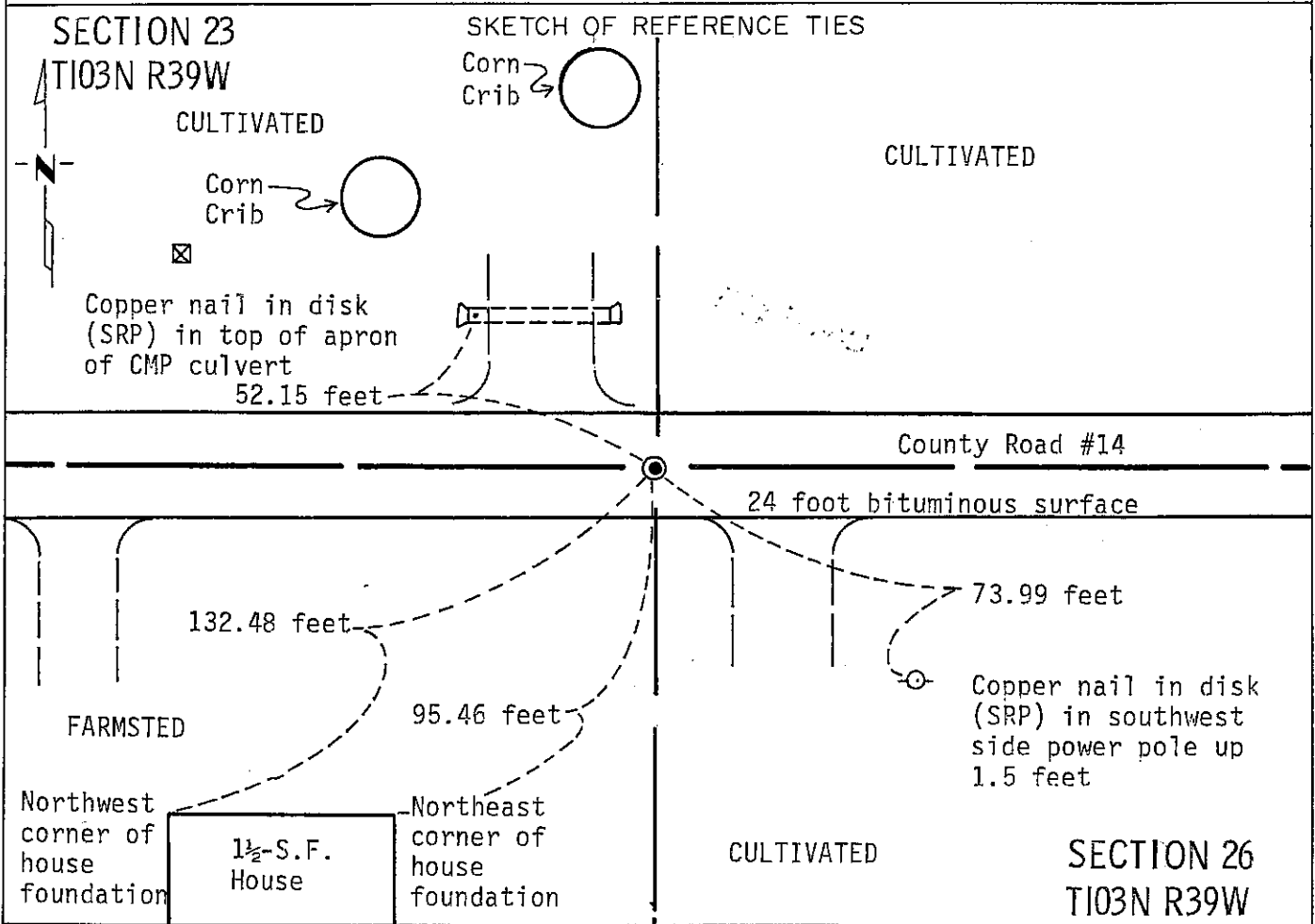
CERTIFICATE OF LOCATION OF GOVERNMENT CORNER

NORTH QUARTER Corner of Section 26, Township 103N, Range 39W, 5 P.M.

STATE OF MINNESOTA, County of NOBLES

At the corner location shown on the sketch:

- On Nov. 2, 1990 found a $\frac{1}{2}$ inch rebar with "Bell R.L.S. #16093" plastic cap flush with bituminous surface (See Statement of Evidence)
 - left monument as found, lowered monument, removed monument (explain)
- On _____ placed a _____



Statement of evidence relative to this corner location is on back of page.

I hereby certify that this document and the data contained herein was prepared by me or under my direct supervision.

Allan E. Schorn 11-19-92
SIGNATURE DATE

Registration No. 11858

- Land Surveyor, Professional Engineer
- County Surveyor, County Engineer

OFFICE OF THE COUNTY RECORDER

County of Nobles

I hereby certify that this document was filed in the Co. Recorders office at 9:25 A. .M. on the 20 day of January A.D., 19 93

County Recorder Joseph Howard

By _____, Deputy

DOCUMENT NO. 250864

Statement of Evidence: North Quarter Corner of Section 26, T103N, R39W, 5th P.M.

- Aug. 29, 1868 The original Public Land Survey was run in 1868 by Deputy Surveyor Richard H. L. Jewett and his notes read, "Set post in mound with pits for $\frac{1}{4}$ Sec. Cor."
- 1931 Nobles County Highway Department records indicate an iron pin.
- 1953 Nobles County Highway Department records indicate an iron pin.
- 1960 Nobles County Highway Department records indicate an iron pin.
- 1974 Nobles County Highway Department records indicate an iron pin.
- Nov. 9, 1990 A Minnesota Department of Transportation field survey crew, composed of R. Busse, D. Janke, B. Ostman and M. Johnson, found a $\frac{1}{2}$ inch rebar with "Bell RLS #16093" plastic cap flush with the bituminous surface. Contact with Bell Engineering could not be made.

An analysis of old survey records and occupation lines of long standing indicate that the in-place rebar set by Tim Bell is in a reasonable location for the corner.

For additional information, including measurements and photographs, contact the Minnesota Department of Transportation in Windom.