

CERTIFICATE OF LOCATION OF GOVERNMENT CORNER

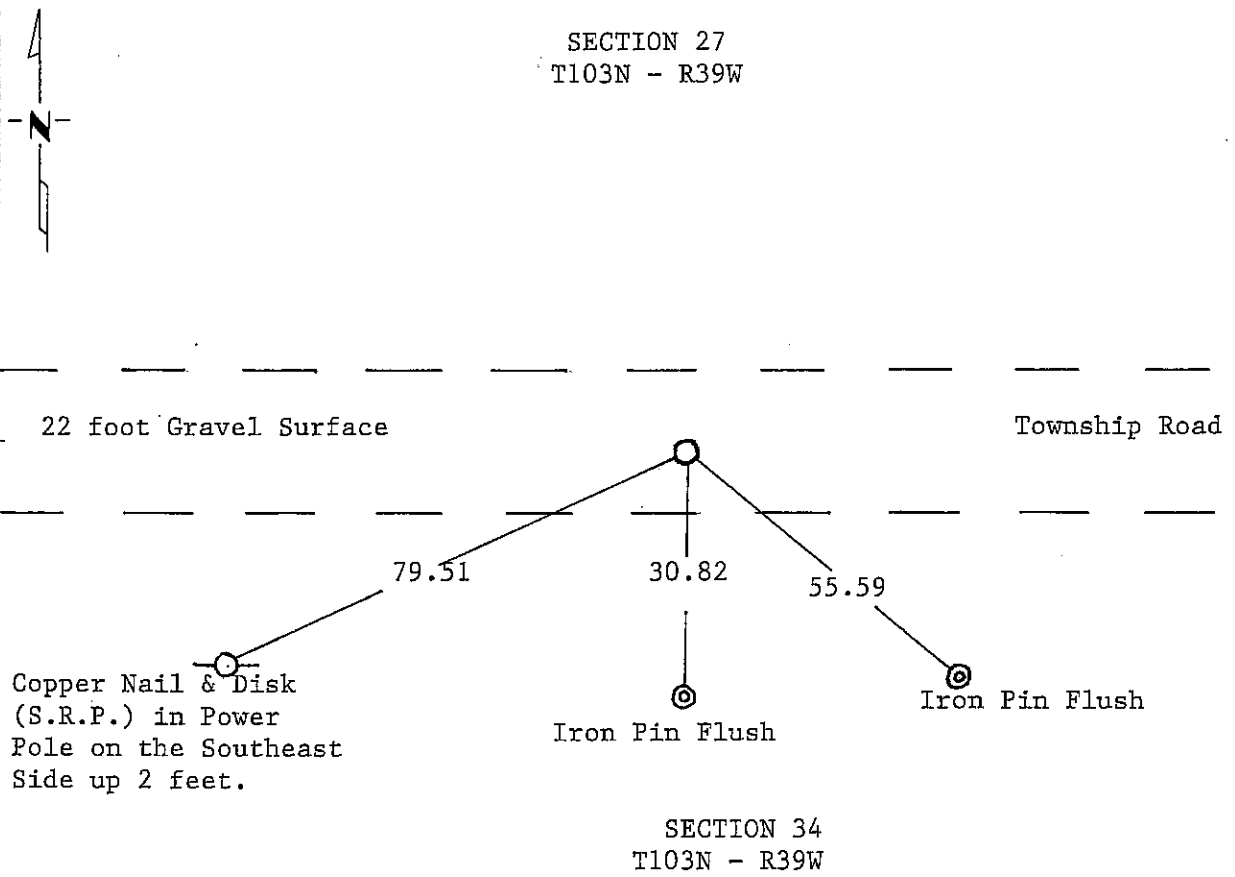
NORTH QUARTER Corner of Section 34, Township 103N, Range 39W, 5th P.M.

STATE OF MINNESOTA, County of NOBLES

At the corner location shown on the sketch:

- On _____ found a _____
DATE
- left monument as found, lowered monument, removed monument (explain)
- On 3-18-1992 placed a Square Tube (Unistrut) with MN/DOT PLS Cap down 0.6
DATE of a foot.

SKETCH OF REFERENCE TIES



Statement of evidence relative to this corner location is on back of page.

I hereby certify that this document and the data contained herein was prepared by me or under my direct supervision.

Allan E. Schoon 10-1-92
SIGNATURE DATE

Registration No. 11858
 Land Surveyor, Professional Engineer
 County Surveyor, County Engineer

OFFICE OF THE COUNTY RECORDER
County of Nobles

I hereby certify that this document was filed in the Co. Recorders office at 8:55 A.M. on the 21st day of October A.D., 19 92

County Recorder James Howard

By _____, Deputy

DOCUMENT NO. 249754

Statement of Evidence: North Quarter Corner of Section 34, T103N, R39W, 5th P.M.

- Aug. 29, 1868 The original Public Land Survey was run in 1868 by Richard H.L. Jewett, Deputy Surveyor, and his notes read, "Set post in mound with pits for $\frac{1}{4}$ sec. cor."
- Oct. 30, 1902 M.S. Smith, Nobles County Surveyor, indicates stake at the corner with "s of grade" on plat of field notes.
- Sept. 22, 1930 A survey was run in 1930 by J.W. Woolstencroft, C.E. from Fulda, MN for P.H. McCall and Mr. Thomas, members of the township board and the owners of the Southwest Quarter of Section 26-103-39. His notes read, "Established NE Corner of Sec. 34 by measure from B-C-D and E to D measures taken from Survey No. 12 of these records. No date or name of Surveyor given found the measurements to run short so corrected our measurements accordingly on north line $1\frac{1}{2}$ feet on each half mile. His notes continue to read in part, "B (Northeast Corner of Section 33) Found old corner stone, C (North Corner Section 34) Fence line only did not look for corner, D (Northeast Corner of Section 34) Established placed stone 8 X 8 X 24" on end marked +, and E (East Quarter Corner of Section 34)."
- Oct. 11, 1989 A Minnesota Department of Transportation field crew consisting of R. Busse, M. Kruger, R. Katke and T. Makovsky, dug a hole 7 feet East and 15 feet West of occupation line from centerline of township road to $8\frac{1}{2}$ feet South to a depth of about $4\frac{1}{2}$ feet. This hole also covered lost location. Encountered $1\frac{1}{2}$ to 2 dozen large stones with no record of stone ever being placed at this corner. No markings on stones. Found no evidence of original stake.
- March 18, 1992 A Minnesota Department of Transportation survey crew consisting of V. Lien, M. Murphy and A. Schafer, using lost location methods set this corner. The corner is identified by a square tube (unistrut) and a Minnesota Department of Transportation Public Land Survey Cap. The lack of record and field evidence indicates that this corner be set by lost methods, by double proportionate measurements from found corners. The lost location is 1.8 feet south of the Township Road centerline.
- For additional information, including field measurements and photographs, contact the Minnesota Department of Transportation in Windom.