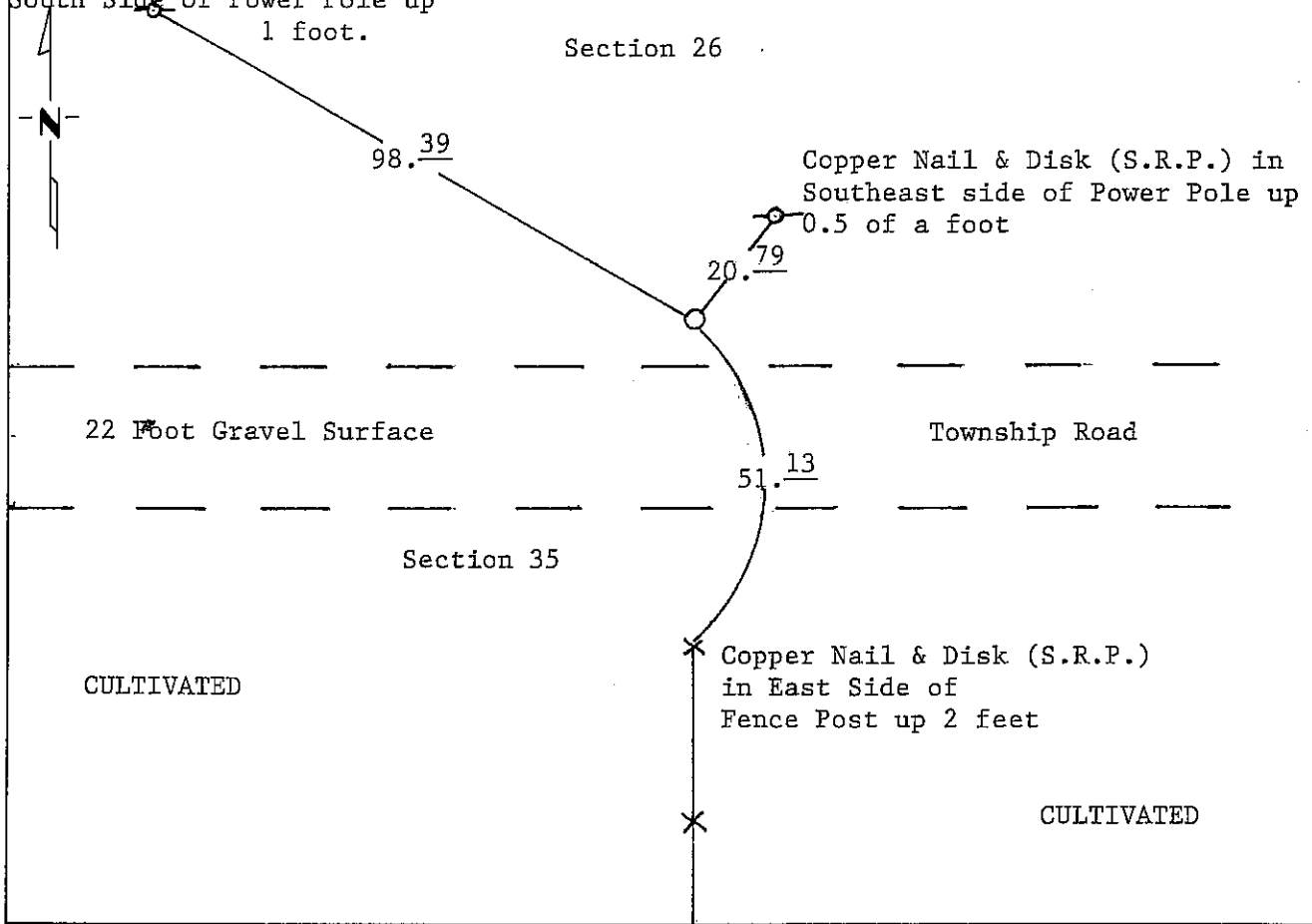


**CERTIFICATE OF LOCATION OF GOVERNMENT CORNER**  
**NORTH QUARTER** Corner of Section 35, Township 10 3N, Range 3 9W, 5<sup>th</sup> P.M.  
 STATE OF MINNESOTA, County of NOBLES

At the corner location shown on the sketch:

- On \_\_\_\_\_ found a \_\_\_\_\_  
DATE
- left monument as found,  lowered monument,  removed monument (explain)
- On 3-18-1992 placed a Square Tube (Unistrut) with MN/DOT PLS Cap flush!  
DATE

Copper Nail & Disk (S.R.P.) in SKETCH OF REFERENCE TIES  
South Side of Power Pole up



Statement of evidence relative to this corner location is on back of page.

I hereby certify that this document and the data contained herein was prepared by me or under my direct supervision.

Allan E. Schoon 10-1-92  
SIGNATURE DATE

Registration No. 11858

- Land Surveyor,  Professional Engineer
- County Surveyor,  County Engineer

OFFICE OF THE COUNTY RECORDER  
County of Nobles

I hereby certify that this document was filed in the Co. Recorders office at 9:00 A.M. on the 21st day of October A.D., 1992

County Recorder Jay Howard

By \_\_\_\_\_, Deputy

DOCUMENT NO. 249755

Statement of Evidence: North Quarter Corner of Section 35, T103N, R39W, 5th P.M.

- Aug. 29, 1868 The original Public Land Survey was run in 1868 by Deputy Surveyor Richard H. L. Jewett, and his notes read, "Set post in mound with pits for  $\frac{1}{4}$  Section Corner".
- June 19, 1934 Gebo, a Minnesota Highway Department Crew Chief, dug a hole 4 feet by 3 feet by 2 feet and found no evidence of corner. He assumed corner.
- Apr. 21, 1987 Tim Bell, of Bell Surveying of Worthington, RLS #16093, indicates on his notes that he dug at the corner and found nothing.
- Aug. 25, 1989 A Minnesota Department of Transportation Survey Crew consisting of Roger Busse, Dan Flatgard, Vern Lien and Gene Menken dug a 12 foot by 21 foot by 4 foot deep hole on the occupation line south and found nothing.
- Nov. 6, 1989 A Minnesota Department of Transportation Survey Crew consisting of Roger Busse, Ken Janovsky and Terry Makovsky, dug a hole with a backhoe 9 feet East, 10 feet West, 5 feet North and 5 feet South of lost location at a variable depth to just into clay. They found no evidence of the corner.
- Mar. 18, 1992 A Minnesota Department of Transportation Survey Crew, Crew Chief Vern Lien, set the corner by lost location methods. They set a square tube (Unistrut) and a Minnesota Department of Transportation Public Land Survey Cap flush with the ground. The location is 18 feet North of the centerline of the gravel road.

The lack of record and field evidence indicates that this corner be set by lost methods, by double proportionate measurements from found corners.

For additional information and photographs, contact the Minnesota Department of Transportation in Windom.