

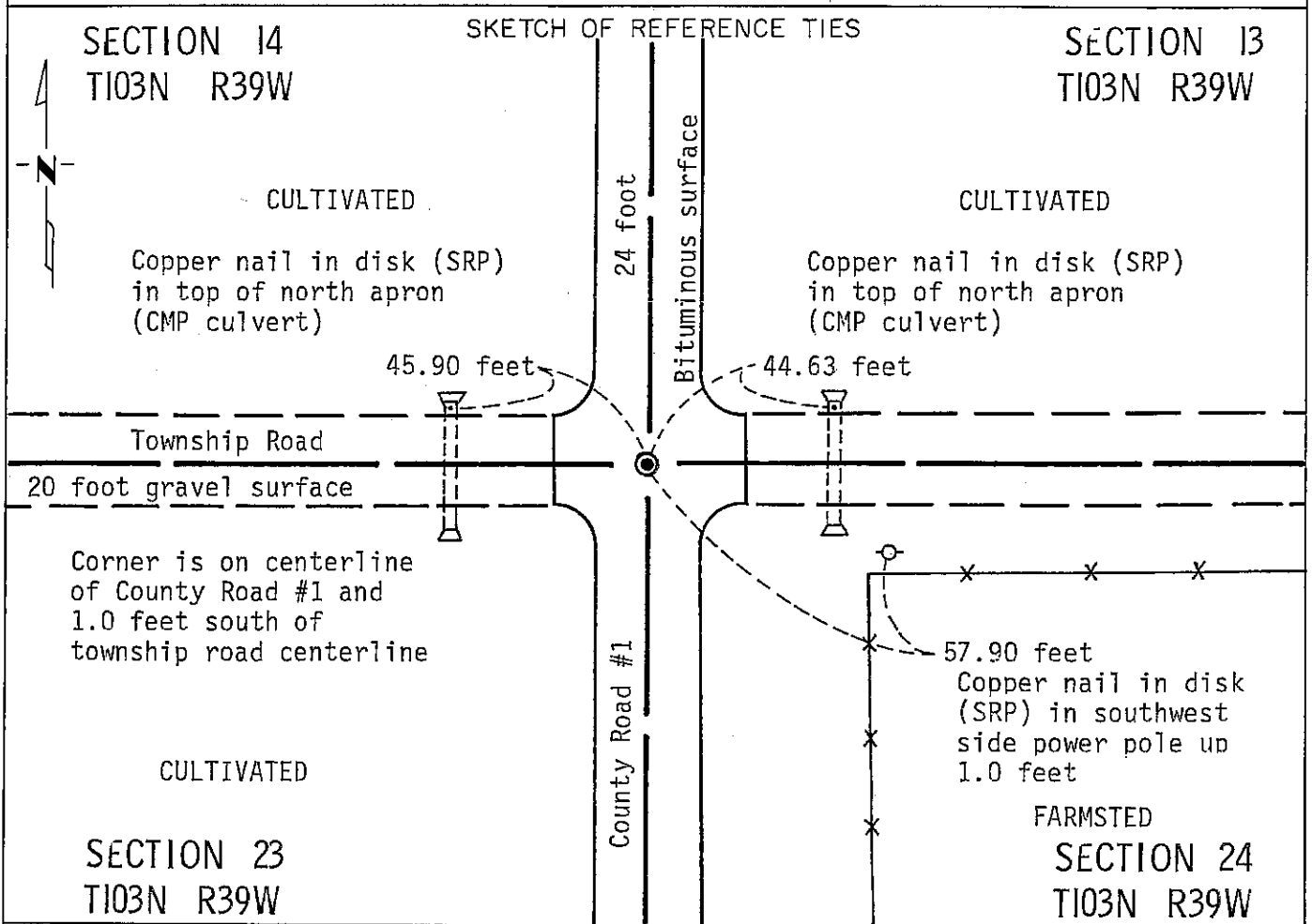
# CERTIFICATE OF LOCATION OF GOVERNMENT CORNER

NORTHEAST Corner of Section 23, Township 103N, Range 39W, 5 P.M.

STATE OF MINNESOTA, County of NOBLES

At the corner location shown on the sketch:

- On Nov. 11, 1990 found a bridge spike down about 4 inches below bituminous surface (See Statement of Evidence)
  - left monument as found,  lowered monument,  removed monument (explain)
- On \_\_\_\_\_ placed a \_\_\_\_\_



Statement of evidence relative to this corner location is on back of page.

I hereby certify that this document and the data contained herein was prepared by me or under my direct supervision.

Allan E. Schoon 10-15-92  
SIGNATURE DATE

Registration No. 11858

- Land Surveyor,  Professional Engineer
- County Surveyor,  County Engineer

OFFICE OF THE COUNTY RECORDER

County of Nobles

I hereby certify that this document was filed in the Co. Recorders office at 8:45 A.M. on the 21st day of October A.D., 19 92

County Recorder James Howard

By \_\_\_\_\_, Deputy

DOCUMENT NO. 249752

Statement of Evidence NORTHEAST CORNER OF SECTION 23, T103N, R39W, NOBLES

- Aug.28,1868 The original Public Land Survey was run in 1868 by Deputy Surveyor Richard H. L. Jewett and his notes read: "Set post in mound with pits for Cor.to Secs.13 14 23 & 24."
- 1953 Nobles county Highway Department records read: "Stone in 1953--- Placed wood stake."
- 1965 Nobles County Highway Department records read: "Wood stake in 1965---Placed iron pin."
- 1976 Nobles County Highway Department records indicate an iron pin.
- Nov.2,1990 A Minnesota Department of Transportation field survey crew consisting of R.Busse, D.Janke, B.Ostman & M.Johnson found a bridge spike based on Nobles County Highway Department records and ties. The bridge spike is about 4 inches below the bituminous surface, on the centerline of Nobles Co.Rd.#1 and about 1 foot south of the centerline of the township roads.

The origin of the bridge spike could not be determined, but an analysis of the old survey records and occupation lines of long standing indicate that the in place bridge spike is at a reasonable location for the corner.

For additional information, including measurements and photographs, contact the Minnesota Department of Transportation in Windom, Minnesota.