

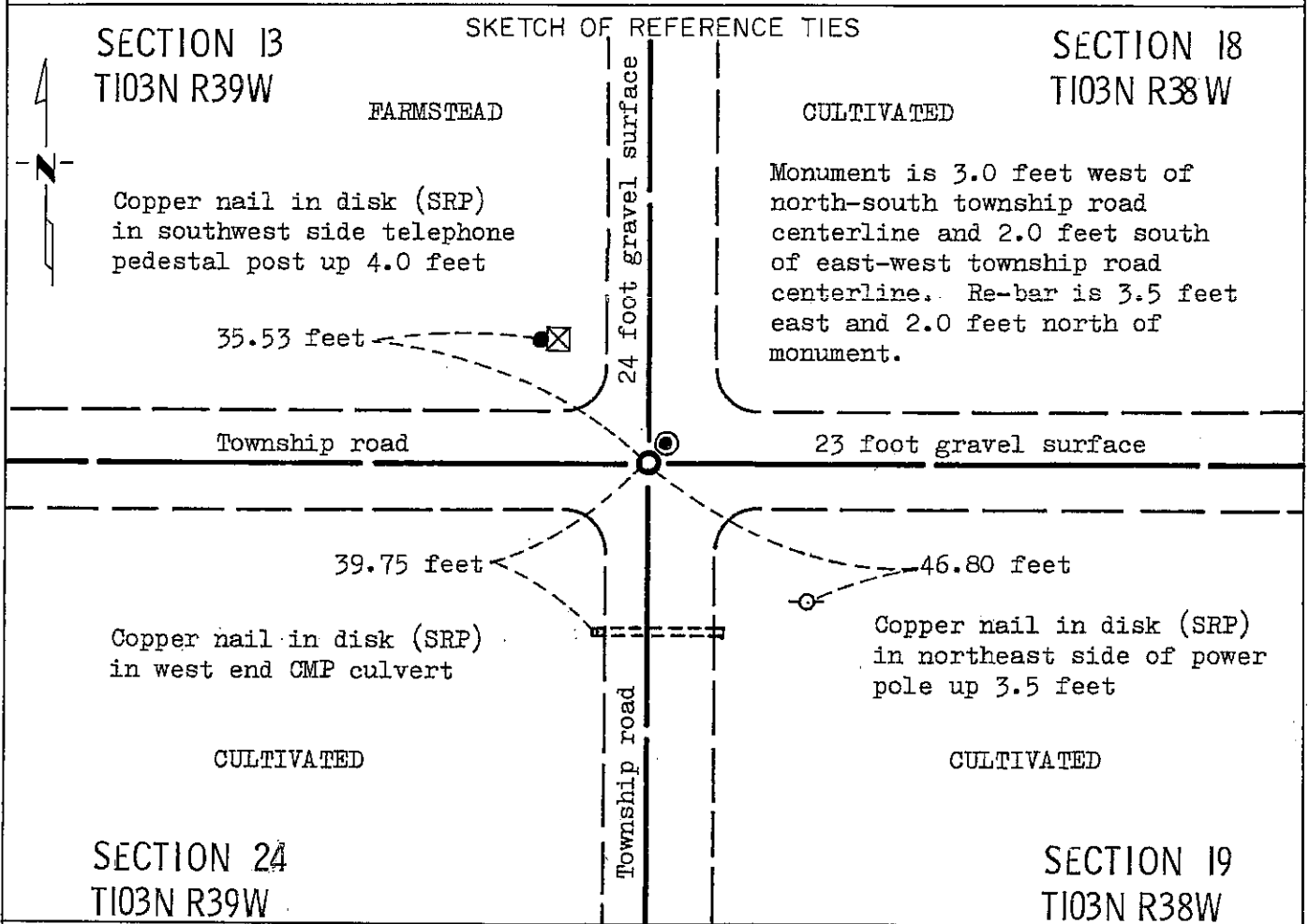
CERTIFICATE OF LOCATION OF GOVERNMENT CORNER

NORTHEAST Corner of Section 24, Township 103N, Range 39W, 5 P.M.

STATE OF MINNESOTA, County of NOBLES

At the corner location shown on the sketch:

- On Aug. 14, 1989 found a $\frac{5}{4}$ inch by 1.5 feet iron pin 2.6 feet below gravel surface and two stones, one on top of the other. (See statement of evidence)
 - left monument as found, lowered monument, removed monument (explain)
- On Aug. 14, 1989 placed a Minnesota Department of Transportation cast iron monument 0.4 feet below gravel surface.



Statement of evidence relative to this corner location is on back of page.

I hereby certify that this document and the data contained herein was prepared by me or under my direct supervision.

Allan E. Schorn 10-15-92
SIGNATURE DATE

Registration No. 11858

- Land Surveyor, Professional Engineer
- County Surveyor, County Engineer

OFFICE OF THE COUNTY RECORDER

County of Nobles

I hereby certify that this document was filed in the Co. Recorders office at 8:50 A.M. on the 21st day of October A.D., 19 92

County Recorder James Howard

By _____, Deputy

DOCUMENT NO. 249753

Statement of Evidence: NORTHEAST CORNER OF SECTION 24,T103N,R39W,5th P.M.

- 1857 The original Public Land Survey of the Range line between Ranges 38W & 39W was run in 1857 by Deputy Surveyor James A. Langton, and his notes read, "Set post corner to secs. 13 18 19 & 24 deposited charcoal made mound trench & pits as per instructions."
- Nov. 25, 1925 A Survey Plat by John Spolman, Nobles County Surveyor, reads: "Found two stones, one on top of the other, and an iron rod under them."
- Apr. 13, 1978 A survey by Sioux Engineering, Inc. of Windom, Minnesota reads in part: "N.W. Cor. Sec. 19-103-38 3/4" iron pipe in place 12" down, raised with 5/8" iron stake."
- Aug. 14, 1989 A Minnesota Department of Transportation field survey crew, consisting of R. Busse, G. Koens, T. Knoll and G. Menken, searched for the corner using a tractor mounted backhoe. During the course of their excavation, they found two stones, one on top of the other, with a 3/4" iron pin along the north side of the stones. The upper stone was 2.8 feet below the gravel surface and measures 0.9' x 1.2' x 0.8'. The lower stone measures 0.9' x 0.9' x 0.7'. There was no evidence of an iron pin under the lower stone. A 1/2" diameter x 1.9' long rebar down 0.3' below the gravel surface and over a 2" diameter x 3.5' long pipe down 1.4' below the gravel surface was found 3.5' east and 2' north of the 3/4" iron pin. Nothing was found below the pipe. These monuments were left as found, and a Minnesota Department of Transportation PLS Monument was placed 0.4' below the gravel surface directly over the stones. No data could be found as to the origin of the pipe, and no other corner evidence was found. The origin of the two stones and the iron pin, found by John Spolman in 1925, could not be determined, but an analysis of survey records and occupation lines of long standing indicate that the in-place stones are at a reasonable location for the corner.

For additional information, including measurements and photographs, contact the Minnesota Department of Transportation in Windom, Minnesota.