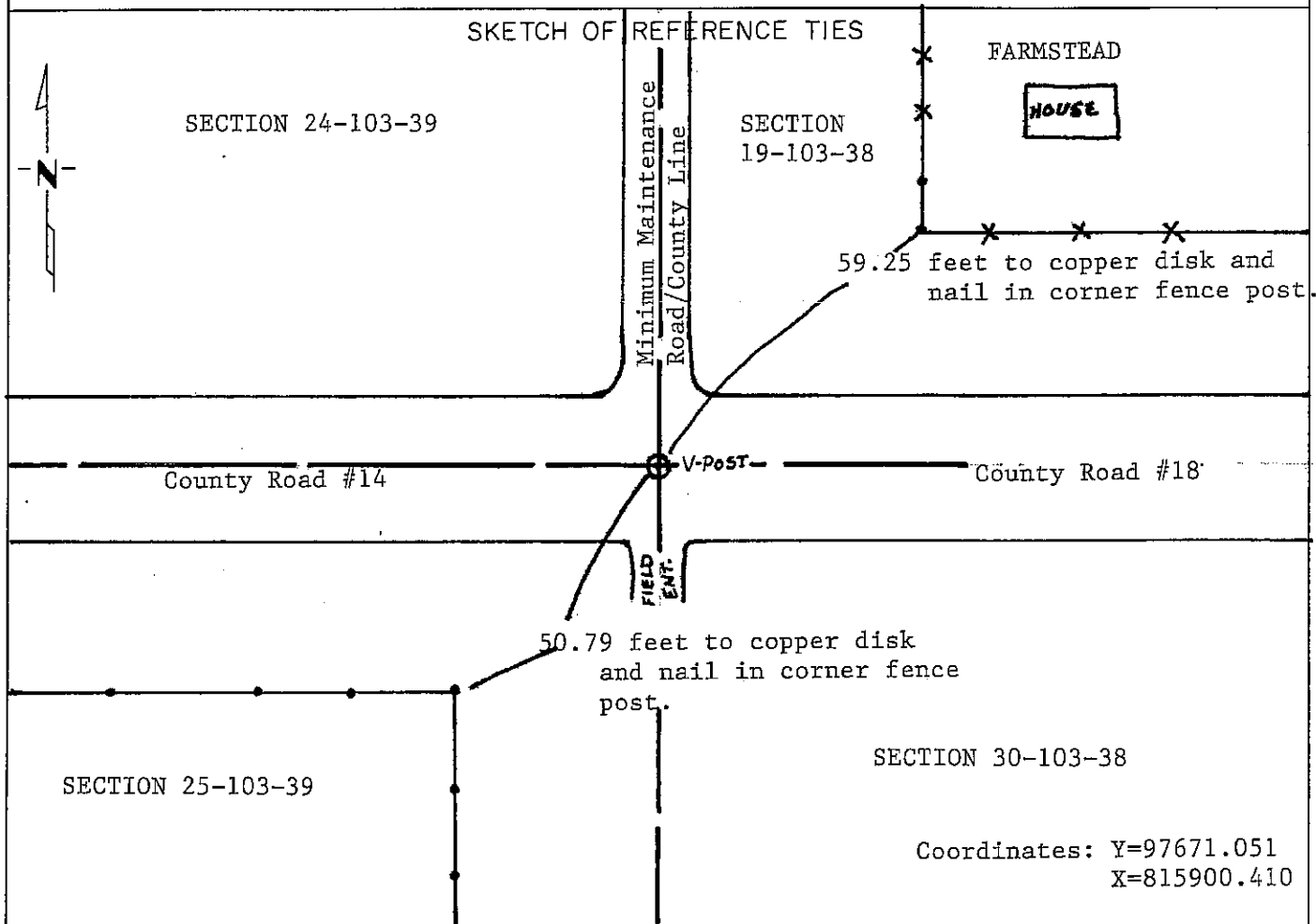


**CERTIFICATE OF LOCATION OF GOVERNMENT CORNER**  
**NORTHEAST** Corner of Section 25, Township 103N, Range 39W, 5<sup>th</sup> P.M.  
 STATE OF MINNESOTA, County of NOBLES

At the corner location shown on the sketch:

- On Dec. 22, 1992 found a V-Post in center of County Roads and on line with the  
DATE  
centerline of the Minimum Maintenance Road down 0.3 foot below bituminous surface  
 left monument as found,  lowered monument,  removed monument (explain)
- On \_\_\_\_\_ placed a \_\_\_\_\_  
DATE



Statement of evidence relative to this corner location is on back of page.

I hereby certify that this document and the data contained herein was prepared by me or under my direct supervision.

Allan E. Schorn 1-07-93  
SIGNATURE DATE

Registration No. 11858

- Land Surveyor,  Professional Engineer
- County Surveyor,  County Engineer

OFFICE OF THE COUNTY RECORDER

County of Nobles

I hereby certify that this document was filed in the Co. Recorders office at 9:15 A .M. on the 20th day of January A.D., 1993

County Recorder James Howard

By \_\_\_\_\_, Deputy

DOCUMENT NO. 250862

Statement of Evidence: Northeast Corner of Section 25, T103N, R39W, 5th P.M.

- 1857 The original Public Land Survey was run in 1857 by Deputy Surveyor James A. Langton, and his notes read, "Set post corner to secs 19 24 25 & 30 deposited charcoal made mound trench & pits as per instruction".
- June 16, 1900 M. S. Smith, Nobles County Surveyor, did a survey of Section 25 and his plat shows a "stone".
- Oct. 24, 1902 M. S. Smith, Nobles County Surveyor, did a survey of Section 25 and his survey plat shows a "stone" at the corner.
- Nobles County Highway Records show a stone in 1900, a stone in 1902, a stone in 1925 and an iron pin in 1950.
- Nov. 28, 1936 R.E. Herrick, Registered Highway Engineer for Jackson County Highway Department, found "a stone 8" below surface and in average line with fence to south". To perpetuate the corner location he placed a permanent marker consisting of "same stone and drove steel axle about 18" long on east side top over peak of stone and 3½" below surface".
- Sept. 9, 1992 A survey was run by Sioux Engineering for the City of Brewster, Survey No. N9202S, in portion of Section 24 and a portion of Section 25. The survey plan indicates an iron stake over a stone for the Northeast Corner of Section 25.
- Dec. 22, 1992 A Minnesota Department of Transportation survey crew consisting of Deni Ernst, Deni Janke and Mike Murphy located a V post in the center of the County Roads and in line with the centerline of the Minimum Maintenance Road. The V post is 0.3 foot below the bituminous surface.
- An analysis of the Statement of Evidence, occupation lines of long standing and field measurements indicate that the V post is at the corner.
- For additional information, including field measurements and photographs, contact the Minnesota Department of Transportation in Windom.