

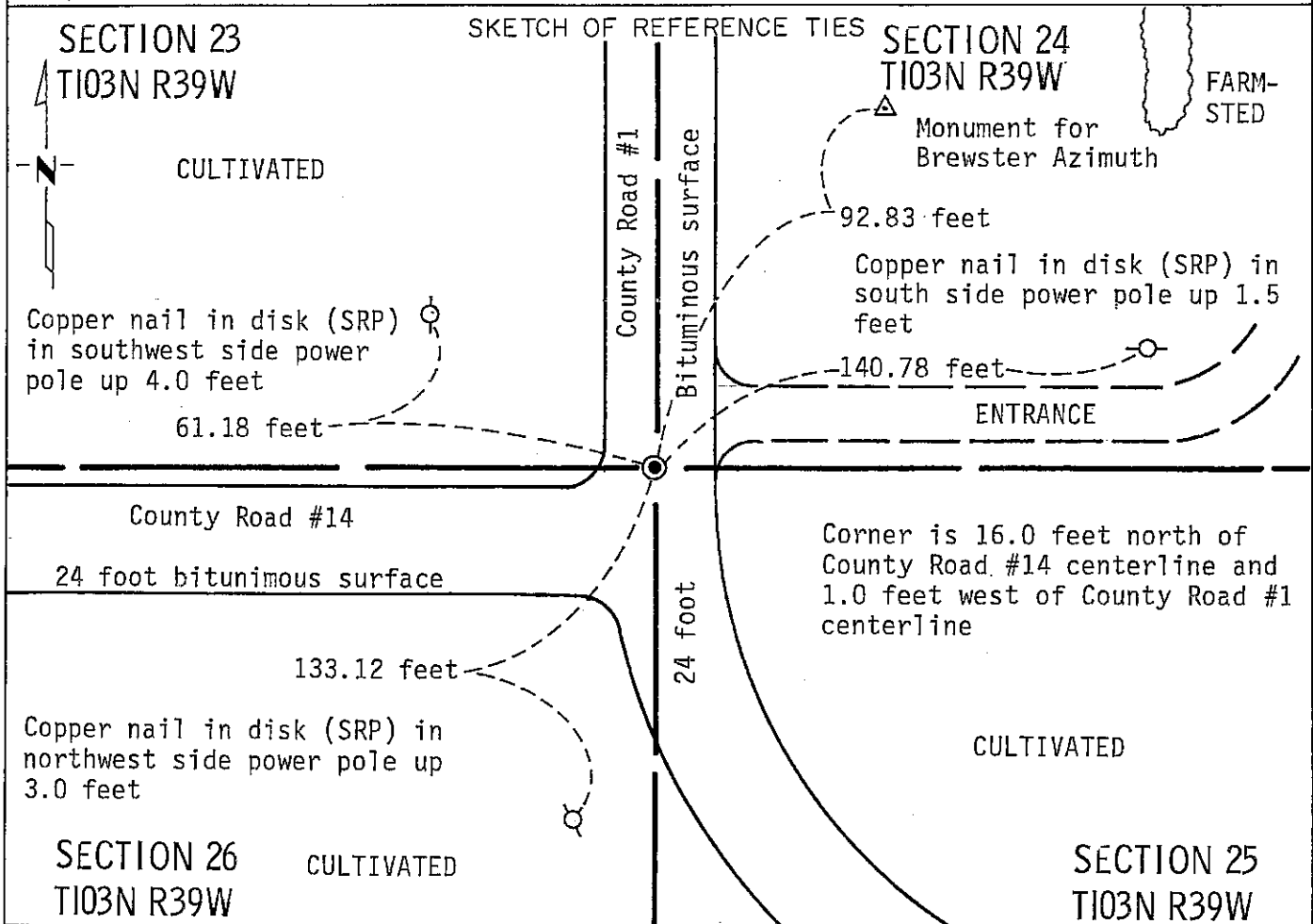
CERTIFICATE OF LOCATION OF GOVERNMENT CORNER

NORTHEAST Corner of Section 26, Township 103N, Range 39W, 5 P.M.

STATE OF MINNESOTA, County of NOBLES

At the corner location shown on the sketch:

- On Nov. 2, 1990 found a bridge spike 3.0 inches below bituminous surface
DATE
 (See Statement of Evidence)
 - left monument as found, lowered monument, removed monument (explain)
- On _____ placed a _____
DATE



Statement of evidence relative to this corner location is on back of page.

I hereby certify that this document and the data contained herein was prepared by me or under my direct supervision.

Allan E. Schorn 3-14-91
SIGNATURE DATE

Registration No. 11858

- Land Surveyor, Professional Engineer
- County Surveyor, County Engineer

OFFICE OF THE COUNTY RECORDER

County of Nobles

I hereby certify that this document was filed in the Co. Recorders office at 8:50 A. M. on the 11th day of September A.D., 1991

County Recorder Joyce Howard

By _____, Deputy

DOCUMENT NO. 245432

Statement of Evidence: Northeast Corner of Section 26 T103N R39W 5th P.M.

- Aug. 27, 1868 The original Public Land Survey was run in 1868 by Deputy Surveyor Richard H. L. Jewett, and his notes read: "Set post in mound with pits for corner to Secs 23, 24, 25 & 26".
- Oct. 24, 1902 A survey plat by M. S. Smith, Nobles County Surveyor, shows a stone at the corner.
- 1902 Nobles County Highway Department records indicate a stone.
- Nov. 2, 1925 A survey plat by John Spolman, Nobles County Surveyor, indicates: "Found old stone".
- 1931 Nobles County Highway Department records indicate an iron pin at the corner.
- Apr. 31, 1934 Gebo, a Minnesota Highway Department crew chief, found a 1 inch diameter steel rod.
- Nov., 1935 A Minnesota Highway Department Right-of-Way Map indicates a 1 inch diameter steel rod.
- 1953 Nobles County Highway Department records indicate an iron pin and placed a wood stake.
- 1965 Nobles County Highway Department records indicate a wood stake and placed an iron pin.
- 1976 Nobles County Highway Department records indicate an iron pin.
- Nov. 9, 1990 A Minnesota Department of Transportation field survey crew, composed of R. Busse, D. Janke, B. Ostman and M. Johnson, found a bridge spike based on Nobles County Highway Department field notes and ties. The bridge spike is approximately 16 feet north of Nobles County Road #14 centerline and approximately 1 foot west of Nobles County Road #1 centerline.

An analysis of old survey records and occupation lines of long standing indicate that the in-place bridge spike is at a reasonable location for the corner.

For additional information, including measurements and photographs, contact the Minnesota Department of Transportation in Windom, Minnesota.

Tract 103N R39W 5th P.M. Compared das
 Photo 1/14/90
 Fee 200