

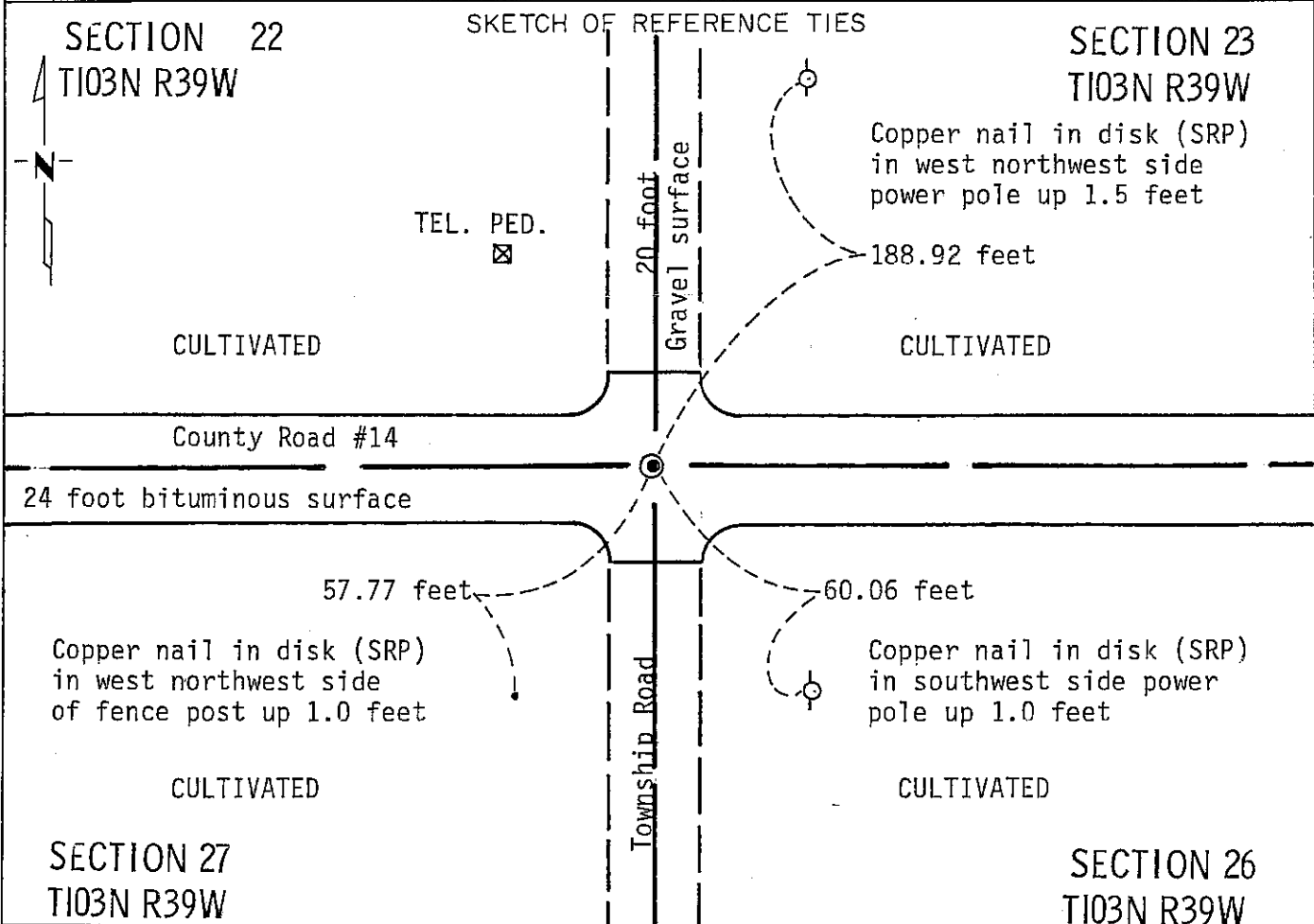
# CERTIFICATE OF LOCATION OF GOVERNMENT CORNER

**NORTHEAST** Corner of Section 27, Township 103N, Range 39W, 5 P.M.

STATE OF MINNESOTA, County of NOBLES

At the corner location shown on the sketch:

- On Nov. 2, 1990 found a bridge spike 3.0 inches below bituminous surface  
(See <sup>DATE</sup> Statement of Evidence)
- left monument as found,  lowered monument,  removed monument (explain)
- On \_\_\_\_\_ placed a \_\_\_\_\_  
DATE



Statement of evidence relative to this corner location is on back of page.

I hereby certify that this document and the data contained herein was prepared by me or under my direct supervision.

Allan E. Schow 3-14-91  
SIGNATURE DATE

Registration No. 11858

Land Surveyor,  Professional Engineer

County Surveyor,  County Engineer

OFFICE OF THE COUNTY RECORDER

County of Nobles

I hereby certify that this document was filed in the Co. Recorders office at 8:55 P. M. on the 11th day of September A.D., 19 91

County Recorder Joyce Howard

By \_\_\_\_\_, Deputy

DOCUMENT NO. 245433

Statement of Evidence: Northeast Corner of Section 27 T103N R39W 5th P.M.

- Aug. 29, 1868 The original Public Land Survey was run in 1868 by Deputy Surveyor Richard H. L. Jewett, and his notes read: "Set post in mound with pits for cor. to Secs. 22, 23, 26, & 27".
- 1931 Nobles County Highway Department land corner records indicate an iron pin in 1931.
- 1953 Nobles County Highway Department land corner records show an iron pin in 1953 -- placed a wood stake.
- 1960 Nobles County Highway Department land corner records show a stake in 1960 -- placed an iron pin.
- 1974 Nobles County Highway Department land corner records indicate an iron pin in 1974.
- Nov. 9, 1990 A Minnesota Department of Transportation field survey crew, consisting of R. Busse, D. Janke, B. Ostman and M. Johnson, found a bridge spike based on Nobles County Highway Department field notes and ties.

An analysis of old survey records and occupation lines of long standing indicate that the in-place bridge spike is at a reasonable location for the corner.

For additional information, including measurements and photographs, contact the Minnesota Department of Transportation in Windom, Minnesota.

Tract 27 Compared do  
 Photo 1/18  
 Fee nc