

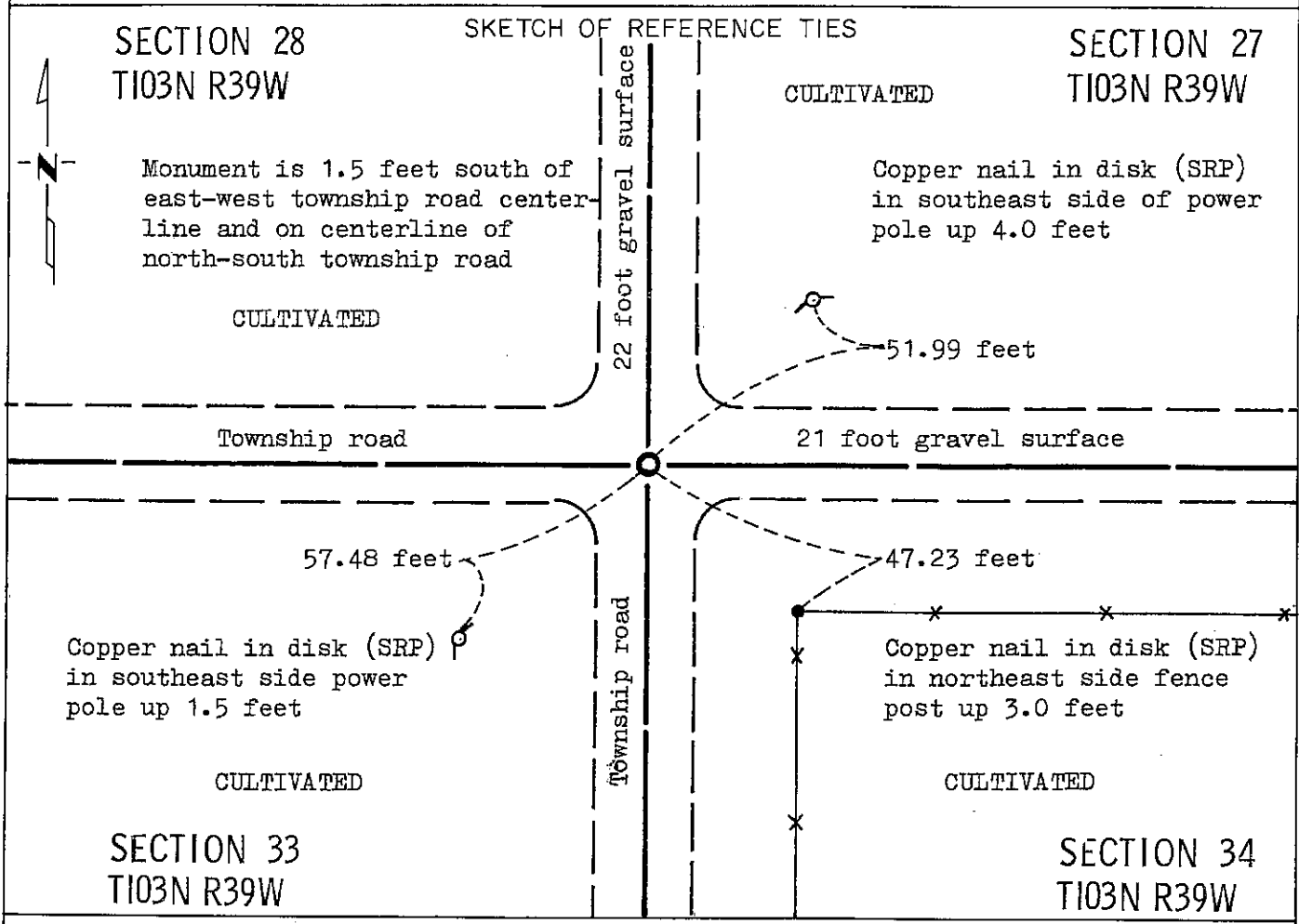
CERTIFICATE OF LOCATION OF GOVERNMENT CORNER

NORTHEAST Corner of Section 33, Township 103N, Range 39W, 5 P.M.

STATE OF MINNESOTA, County of NOBLES

At the corner location shown on the sketch:

- On Aug. 22, 1989 found a 5/8 inch diameter by 24.5 inch rebar 5 inches below
DATE
gravel surface over a 11 inch by 6 1/2 inch by 8 inch stone down 29.5 inches.
 - left monument as found, lowered monument, removed monument (explain)
- On Aug. 22, 1989 placed a Minnesota Department of Transportation cast iron
DATE
monument 5 inches below gravel surface



Statement of evidence relative to this corner location is on back of page.

I hereby certify that this document and the data contained herein was prepared by me or under my direct supervision.

Allan E. Schorn 3-14-91
SIGNATURE DATE

Registration No. 11858

Land Surveyor, Professional Engineer

County Surveyor, County Engineer

OFFICE OF THE COUNTY RECORDER
County of Nobles

I hereby certify that this document was filed in the Co. Recorders office at 8:30 A.M. on the 12th day of September A.D., 1991

County Recorder Joseph Howard

By _____, Deputy

DOCUMENT NO. 245437

Statement of Evidence: Northeast Corner Section 33 T103N R39W 5th P.M.

- Aug. 29, 1868 The original Public Land Survey was run in 1868 by Deputy Surveyor Richard H. L. Jewett, and his notes read: "Set post in mound with pits for cor. to secs. 27, 28, 33 & 34".
- 1901 Nobles County Highway Department records show a stone in 1901.
- Oct. 30, 1902 A survey plat by M. S. Smith, County Surveyor, indicates a stone at the corner.
- 1902 Nobles County Highway Department records indicate a stone in 1902.
- Sept. 6, 1912 A plat by William A. Saxon, Nobles County Surveyor, indicates that he found the stone for this corner.
- 1920 Nobles County Highway Department records indicate a stone in 1920.
- Sept. 22, 1930 J. W. Woolstencroft, City Engineer of Fulda, Minnesota, indicates on his plat that he found the old corner stone.
- 1930 Nobles County Highway Department records indicate a stone in 1930.
- 1979 Nobles County Highway Department records indicate a stone in 1979 -- placed an iron pin.
- Aug. 22, 1989 A Minnesota Department of Transportation field survey crew, consisting of R. Busse, K. Janovsky, M. Johnson and G. Menken, searched for the corner using a tractor mounted backhoe. During the course of their excavation, they found a 5/8 inch diameter by 24.5 inch long rebar 5 inches below the gravel road surface. The rebar was over an 11 inch by 6½ inch by 8 inch stone with no visible markings down 29.5 inches below the gravel road surface. They left the stone as found, and removed the rebar to accommodate the placement of a Minnesota Department of Transportation Public Land Survey Monument directly over the stone and at the same position as the rebar.

The origin of the stone could not be determined, but an analysis of survey records and occupation lines of long standing indicate that the in-place stone is at a reasonable location for the corner.

For additional information, including measurements and photographs, contact the Minnesota Department of Transportation in Windom, Minnesota.