

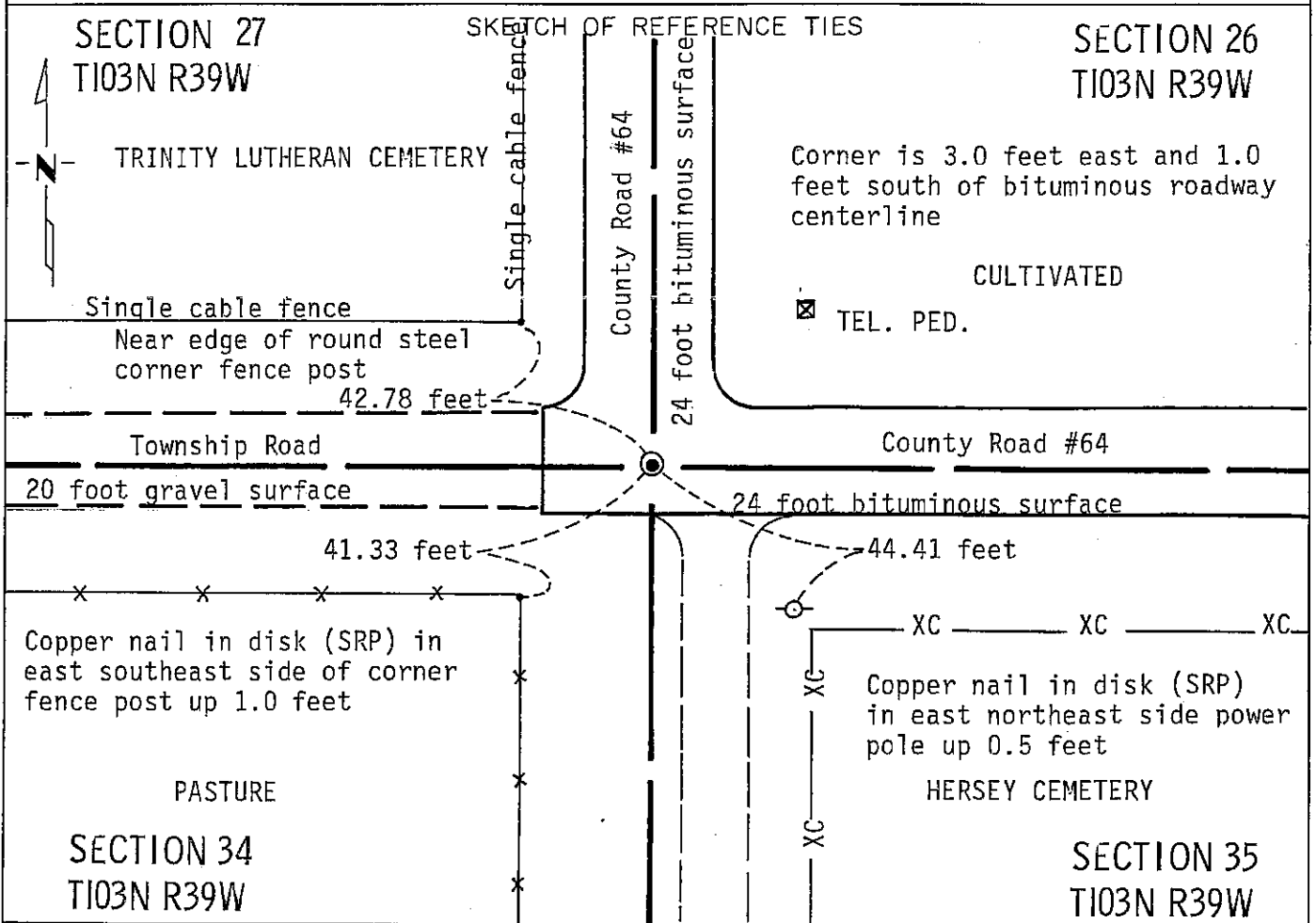
# CERTIFICATE OF LOCATION OF GOVERNMENT CORNER

NORTHEAST Corner of Section 34, Township T103N, Range 39W, 5 P.M.

STATE OF MINNESOTA, County of NOBLES

At the corner location shown on the sketch:

- On Nov. 9, 1990 found a 1/2 inch rebar with "Bell R.L.S. #16093" plastic cap 2.0 inches below bituminous surface (See Statement of Evidence)
  - left monument as found,  lowered monument,  removed monument (explain)
- On \_\_\_\_\_ placed a \_\_\_\_\_



Statement of evidence relative to this corner location is on back of page.

I hereby certify that this document and the data contained herein was prepared by me or under my direct supervision.

Allan E. Schoon 3-14-91  
SIGNATURE DATE

Registration No. 11858

- Land Surveyor,  Professional Engineer
- County Surveyor,  County Engineer

OFFICE OF THE COUNTY RECORDER

County of Nobles

I hereby certify that this document was filed in the Co. Recorders office at 8:40 A .M. on the 12th day of September A.D., 1991

County Recorder James Howard

By \_\_\_\_\_, Deputy

DOCUMENT NO. 245439

Statement of Evidence: Northeast Corner of Section 34 T103N R39W 5th P.M.

- Aug. 29, 1868 The original Public Land Survey was run in 1868 by Deputy Surveyor Richard H. L. Jewett, and his notes read: "Set post in mound with pits for cor to secs 26, 27, 34 & 35".
- 1894 Nobles County Highway Department records indicate a stake in 1894.
- Oct. 30, 1902 A survey plat by M. S. Smith, Nobles County Surveyor, indicates a stone.
- 1902 Nobles County Highway Department records indicate a stone in 1902.
- Sept. 22, 1930 A survey plat by J. W. Woolstencroft, City Engineer of Fulda, Minnesota, reads: "Established placed stone 8 x 8 x 24 on end marked "+". Reference marker Cemetery, corner of fence 47.9 S-E; fence corner 41.6 S-W; fence corner 38.4 N-W; fence corner 35.3 N-E".
- 1930 Nobles County Highway Department records indicate a stone set in 1930.
- Jun 15, 1934 Gebo, a Minnesota Highway Department field crew chief, excavated for the corner and found a grey granite stone round in shape with a "+" mark on top = about 4 inch top.
- Nov., 1935 A Minnesota Highway Department Right-of-Way Map indicates a granite monument in place.
- 1949 Nobles County Highway Department records indicate a stone in 1949.
- Apr. 21, 1987 Notes by Tim Bell, Registered Land Surveyor #16093, read: "Dug, found 2 wood hubs above stone & spike nail on top of each other, found chisled "+" on top of stone 28" below grade. Set ½" rebar "Bell" above".
- Nov. 9, 1990 A Minnesota Department of Transportation field crew, consisting of R. Busse, D. Janke, B. Ostman and M. Johnson, searched for the corner using Bell's field notes and ties. They found a ½ inch rebar with a "Bell RLS #16093" plastic cap about 2 inches below the bituminous surface and about 3 feet east and 1 foot south of the bituminous roadway centerlines.

The rebar set by Tim Bell in 1987 is a perpetuation of the stone, set by J. W. Wollstencroft, in his survey of September 22, 1930, and is in a reasonable location. An analysis of survey records and occupation lines of long standing indicate that the in place rebar and stone are at the corner.

For additional information, including measurements and photographs, contact th Minnesota Department of Transportation in Windom, Minnesota.