

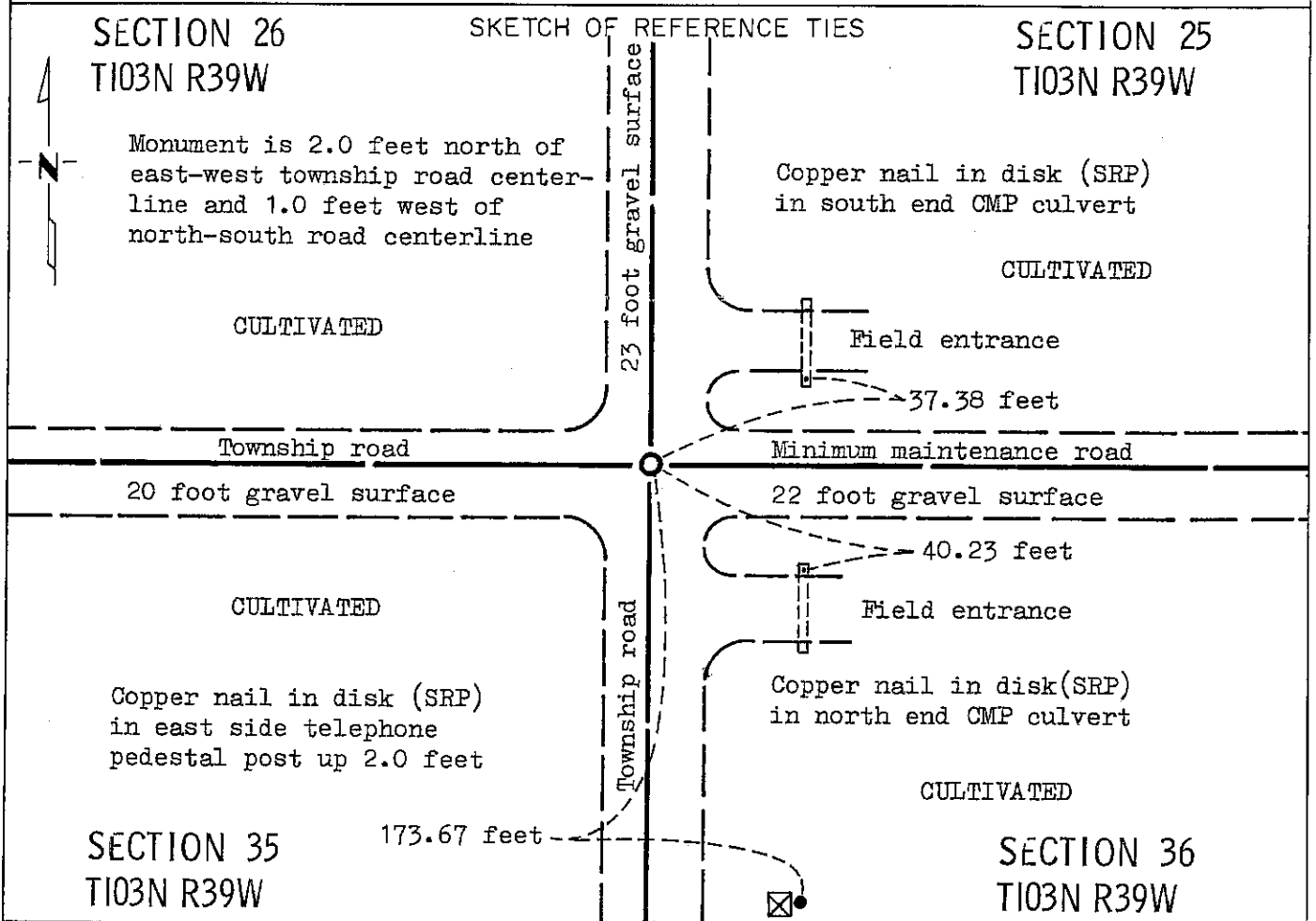
# CERTIFICATE OF LOCATION OF GOVERNMENT CORNER

NORTHEAST Corner of Section 35, Township T103N, Range 39W, 5 P.M.

STATE OF MINNESOTA, County of NOBLES

At the corner location shown on the sketch:

- On Aug. 24, 1989 found a PLS monument #16093 8 inches below surface over a 11  
DATE  
inch by 13 inch by 18 inch stone with chiseled "x" (See statement of evidence)  
 left monument as found,  lowered monument,  removed monument (explain)
- On Aug. 24, 1989 placed a Minnesota Department of Transportation cast iron  
DATE  
monument 6 inches below gravel surface



Statement of evidence relative to this corner location is on back of page.

I hereby certify that this document and the data contained herein was prepared by me or under my direct supervision.

Allan E. Schoon 3-14-91  
SIGNATURE DATE

Registration No. 11858

- Land Surveyor,  Professional Engineer
- County Surveyor,  County Engineer

OFFICE OF THE COUNTY RECORDER

County of Nobles

I hereby certify that this document was filed in the Co. Recorders office at 8:50 A. .M. on the 13th day of September A.D., 19 91

County Recorder James Howard

By \_\_\_\_\_, Deputy

DOCUMENT NO. 245441

Statement of Evidence: Northeast Corner Section 35 T103N R39W 5th P.M.

- Aug. 27, 1868 The original Public Land Survey was run in 1868 by Deputy Surveyor Richard H. L. Jewett and his notes read: "Set post in mound with pits for corner to secs. 25, 26, 35 & 36".
- June 16, 1900 A plat by M. S. Smith, Nobles County Surveyor, shows a stone and stakes.
- 1900 Nobles County Highway Department records show a stone in 1900.
- Oct. 24, 1902 A plat by M. S. Smith, Nobles County Surveyor, shows a stone at the corner.
- 1902 Nobles County Highway Department records show a stone in 1902.
- May 29, 1912 A plat by William A. Saxon, Nobles County Surveyor, shows a stone at the corner.
- 1912 Nobles County Highway Department records show a stone in 1912.
- 1932 Nobles County Highway Department records show a stone in 1932.
- 1951 Nobles County Highway Department records show a stone in 1951.
- Apr. 21, 1987 Notes by Tim Bell, Registered Land Surveyor #16093, read: "Dug, found  $\frac{1}{2}$ " rebar 3" below grade, probed down hit stone beneath rebar, located centerline of intersection".
- Aug. 24, 1989 A Minnesota Department of Transportation field crew, consisting of R. Busse, M. Johnson and G. Menken, searched for the corner using a tractor mounted backhoe. During the course of their excavation, they found a 5/8 inch diameter rebar over a stone with a chiseled "+" measuring 11 inches by 13 inches by 18 inches down 32 inches below the gravel road surface. They removed the 5/8 inch rebar to accommodate the placement of a Minnesota Department of Transportation Public Land Survey Monument directly over the stone and at the same location as the rebar set by Tim Bell in 1987.

The origin of the stone could not be determined, but an analysis of old survey records and occupation lines of long standing indicate that the in place stone is at a reasonable location for the corner.

For additional information, including measurements and photographs, contact the Minnesota Department of Transportation in Windom, Minnesota.