

CERTIFICATE OF LOCATION OF GOVERNMENT CORNER

South 1/4 Corner of Section 18, Township 103N, Range 39W, 5th P.M.

STATE OF MINNESOTA, County of Nobles

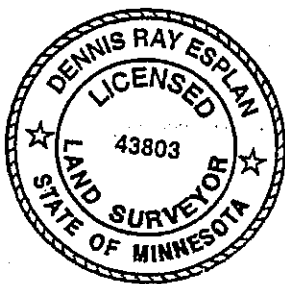
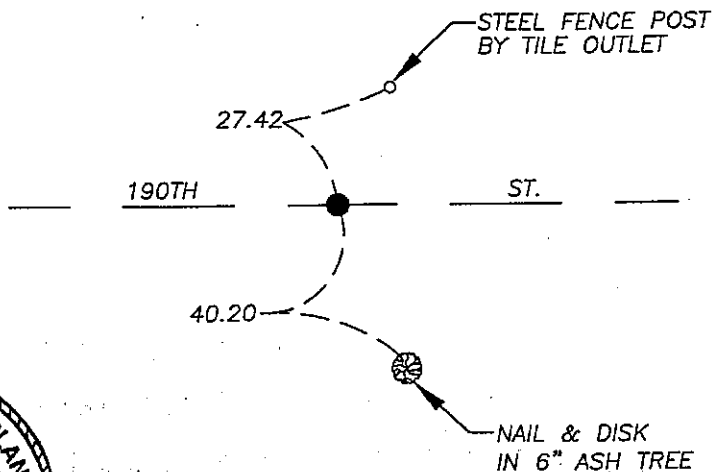
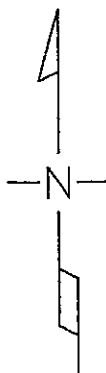
At the corner location shown on the sketch

On 9/14/05 found a 60d spike over 15" stone 18" deep.

left stone as found lowered monument, removed 60d spike

On 9/14/05 placed a 1" Iron Pipe with red survey cap #43803 over top of stone.

SKETCH OF REFERENCE TIES



NAD 83 (1996)
US STATE PLANE 1983
MN SOUTH
593775.65N
2211374.24E

Statement of evidence relative to this corner location is on page 2.

I hereby certify that this document and the data contained herein was prepared by me or under my direct supervision.

Dennis Ray Esplan 10/11/05
SIGNATURE DATE

MN. LICENSE NO. 43803

Land Surveyor, Professional Engineer

County Surveyor, County Engineer

OFFICE OF THE COUNTY RECORDER

I hereby certify that this document was filed in the Co. Recorder's Office at _____ on the

_____ day of _____

County Recorder _____
By _____, Deputy

DOCUMENT NO. _____

Statement of Evidence

1868 Original Township subdivision was surveyed by Jewett and Howe.

1891 Nobles Co. Hwy. Dept. records indicate a stone was set.

1917 Nobles Co. Hwy. Dept. records indicate a stone was found.

2005 Gerald Vickerman PLS and Jeremy Lund, with Zieske Land Surveying found a 60d spike, removed spike and dug with a backhoe and found a 15" stone 18" deep.

