

CERTIFICATE OF LOCATION OF GOVERNMENT CORNER

South 1/4 Corner of Section 20, Township 103N, Range 39W, 5th P.M.

STATE OF MINNESOTA, County of Nobles

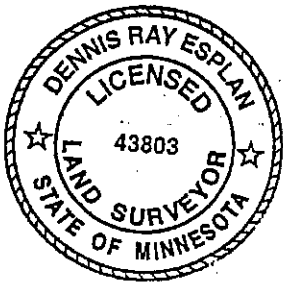
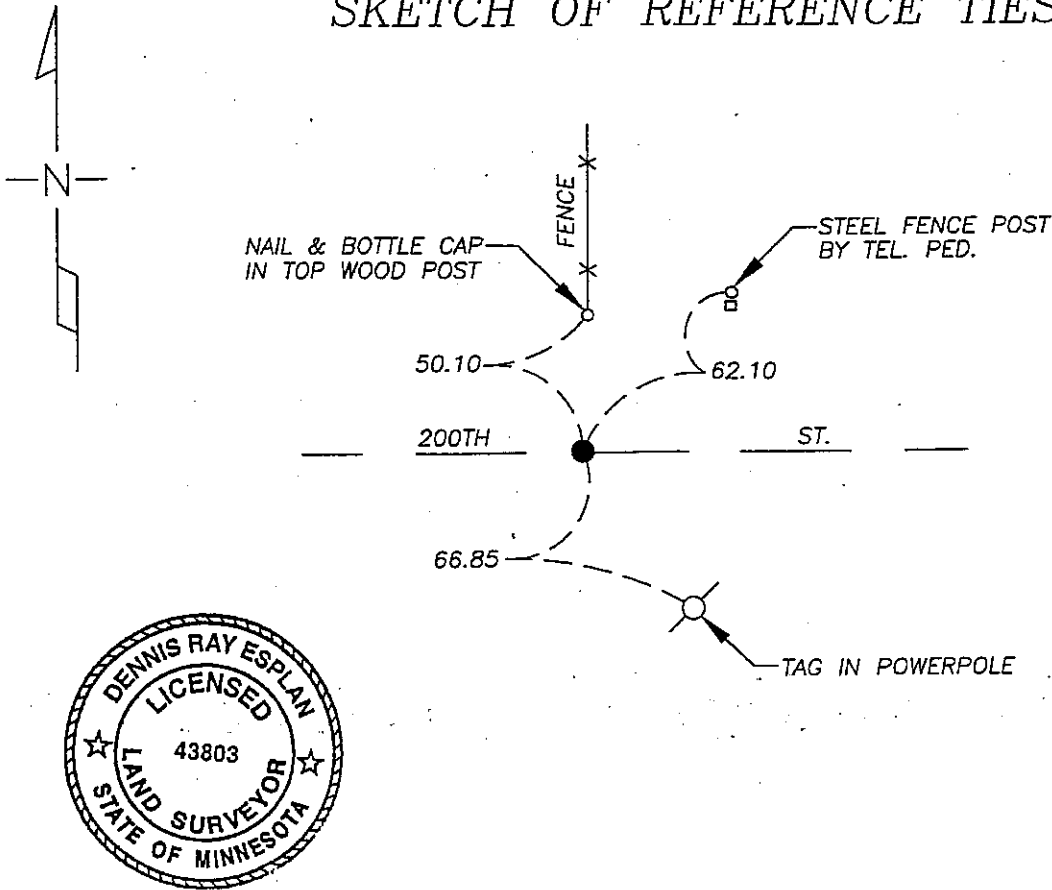
At the corner location shown on the sketch

On 9/16/05 found a Mag nail over iron stake at road surface on C of road and in line with fence north.

left monument as found lowered monument, removed monument (explain)

On _____ placed a _____

SKETCH OF REFERENCE TIES



NAD 83 (1996)
US STATE PLANE 1983
MN SOUTH
588356.23N
2216610.69E

Statement of evidence relative to this corner location is on page 2.

I hereby certify that this document and the data contained herein was prepared by me or under my direct supervision.

Dennis Ray Esplan 10/11/05
SIGNATURE DATE

MN. LICENSE NO. 43803

- Land Surveyor, Professional Engineer
- County Surveyor, County Engineer

OFFICE OF THE COUNTY RECORDER

I hereby certify that this document was filed in the Co. Recorder's Office at _____ on the _____ day of _____

County Recorder _____
By _____, Deputy
DOCUMENT NO. _____

Statement of Evidence

1868 Original Township subdivision was surveyed by Jewett and Howe.

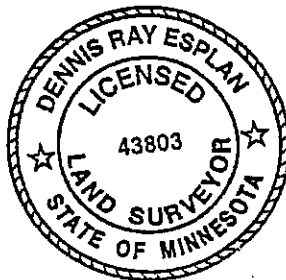
1902 & 1937 Nobles Co. Hwy. Dept. records indicate a stone was found.

1953 Nobles Co. Hwy. Dept. records indicate a wood stake was found.

1960 Nobles Co. Hwy. Dept. records indicate a wood stake was found and an iron pin was set.

2000 Nobles Co. Hwy. Dept records indicate an iron pin was found and a P.K. nail was set after overlay.

2005 Gerald Vickerman PLS and Jeremy Lund, with Zieske Land Surveying found a mag nail at road surface. Ties are consistent with Nobles County ties.



DOCUMENT NUMBER A 306825

Certified, Filed and or Recorded on
NOV. 07, 2005 AT 04:45:00PM

TRACKED 2 COMPARED _____
PHOTO 2
FEE _____

NOBLES COUNTY RECORDER
LYNN M. WILSON
507-372-8216