

# CERTIFICATE OF LOCATION OF GOVERNMENT CORNER

South 1/4 Corner of Section 21, Township 103N, Range 39W, 5th P.M.

STATE OF MINNESOTA, County of Nobles

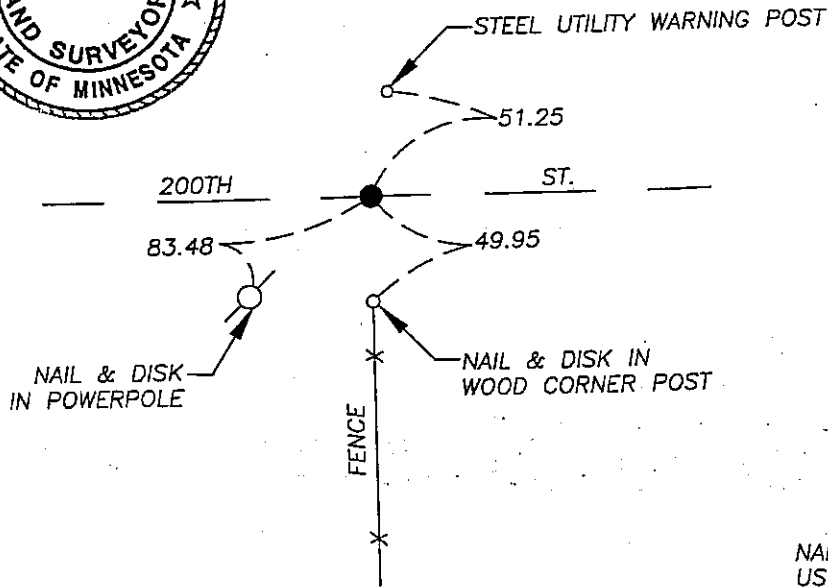
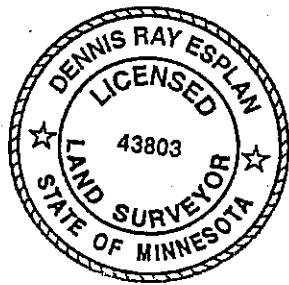
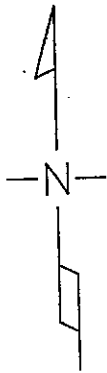
At the corner location shown on the sketch

On 9/16/05 found a Mag nail over iron at road surface, on road center and in line with fence south.

left monument as found  lowered monument,  removed monument (explain)

On \_\_\_\_\_ placed a \_\_\_\_\_

## SKETCH OF REFERENCE TIES



NAD 83 (1996)  
US STATE PLANE 1983  
MN SOUTH  
588247.36N  
2221890.94E

Statement of evidence relative to this corner location is on page 2.

I hereby certify that this document and the data contained herein was prepared by me or under my direct supervision.

*Dennis Ray Esplan*  
SIGNATURE

10/11/05  
DATE

MN. LICENSE NO. 43803

- Land Surveyor,  Professional Engineer
- County Surveyor,  County Engineer

OFFICE OF THE COUNTY RECORDER

I hereby certify that this document was filed in the Co. Recorder's Office at \_\_\_\_\_ on the \_\_\_\_\_ day of \_\_\_\_\_

County Recorder \_\_\_\_\_  
By \_\_\_\_\_, Deputy

DOCUMENT NO. \_\_\_\_\_

Statement of Evidence

1868 Original Township subdivision was surveyed by Jewett and Howe.

1902 Nobles Co. Hwy. Dept. records indicate a stone was found.

1953, 1960 & 1974 Nobles Co. Hwy. Dept. records indicate an iron pin was found.

2000 Nobles Co. Hwy. Dept records indicate an iron pin was set after overlay.

2005 Gerald Vickerman PLS and Jeremy Lund, with Zieske Land Surveying found a nail. Ties are consistent with Nobles County ties.



DOCUMENT NUMBER A 306829

Certified, Filed and or Recorded on  
NOV. 07, 2005 AT 05:05:00PM

TRACKED \_\_\_\_\_ COMPARED \_\_\_\_\_  
PHOTO DL  
FEE \_\_\_\_\_

NOBLES COUNTY RECORDER  
LYNN M. WILSON  
507-372-8216