

# CERTIFICATE OF LOCATION OF GOVERNMENT CORNER

South 1/4 Corner of Section 22, Township 103N, Range 39W, 5th P.M.

STATE OF MINNESOTA, County of Nobles

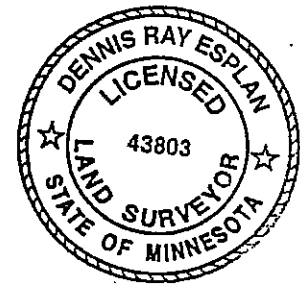
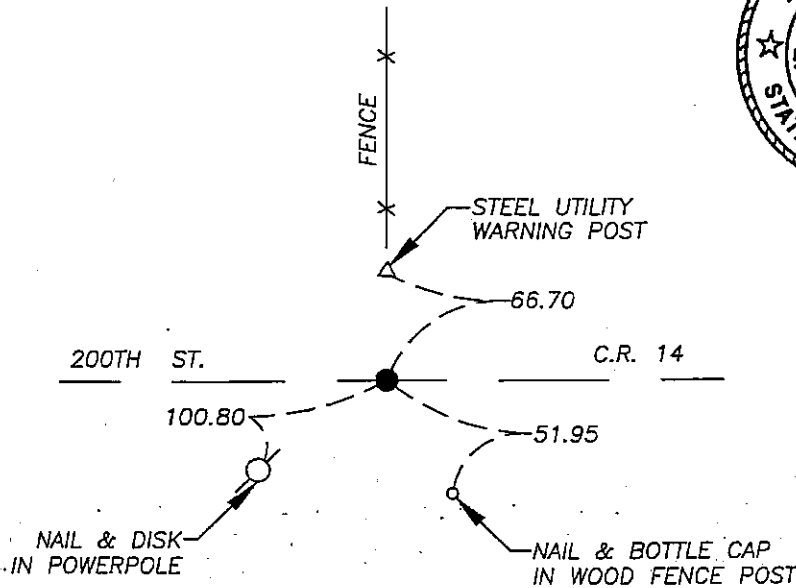
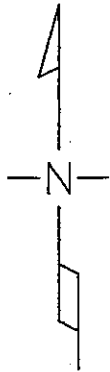
At the corner location shown on the sketch

On 9/16/05 found a Mag nail over iron stake at road surface, on @ of road and in line with fence North.

left monument as found       lowered monument,       removed monument (explain)

On \_\_\_\_\_ placed a \_\_\_\_\_

## SKETCH OF REFERENCE TIES



NAD 83 (1996)  
US STATE PLANE 1983  
MN SOUTH  
588089.56N  
2227214.01E

Statement of evidence relative to this corner location is on page 2.

I hereby certify that this document and the data contained herein was prepared by me or under my direct supervision.

Dennis Ray Esplan      10/11/05  
SIGNATURE                                      DATE

MN. LICENSE NO. 43803

- Land Surveyor,       Professional Engineer  
 County Surveyor,       County Engineer

OFFICE OF THE COUNTY RECORDER

I hereby certify that this document was filed in the Co. Recorder's Office at \_\_\_\_\_ on the \_\_\_\_\_ day of \_\_\_\_\_

County Recorder \_\_\_\_\_  
By \_\_\_\_\_, Deputy  
DOCUMENT NO. \_\_\_\_\_

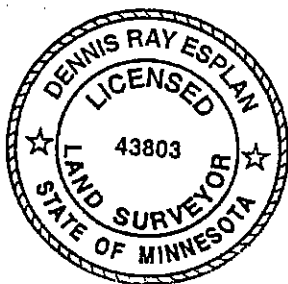
Statement of Evidence

1868 Original Township subdivision was surveyed by Jewett and Howe.

1953, 1958, 1974 & 2000 Nobles Co. Hwy. Dept. records indicate an iron pin was found.

2000 Nobles Co. Hwy. Dept. records indicate a nail was set after overlay.

2005 Gerald Vickerman PLS and Jeremy Lund, with Zieske Land Surveying found a mag nail at road surface.



DOCUMENT NUMBER A 306831

Certified, Filed and or Recorded on  
NOV. 07, 2005 AT 05:15:00PM

A handwritten signature in cursive script, appearing to read "Lynn M. Wilson".

INDEXED \_\_\_\_\_ COMPARED \_\_\_\_\_  
FILED \_\_\_\_\_

NOBLES COUNTY RECORDER  
LYNN M. WILSON  
507-372-8216