

CERTIFICATE OF LOCATION OF GOVERNMENT CORNER

Southwest Corner of Section 15, Township 103N, Range 39W, 5th P.M.

STATE OF MINNESOTA, County of Nobles

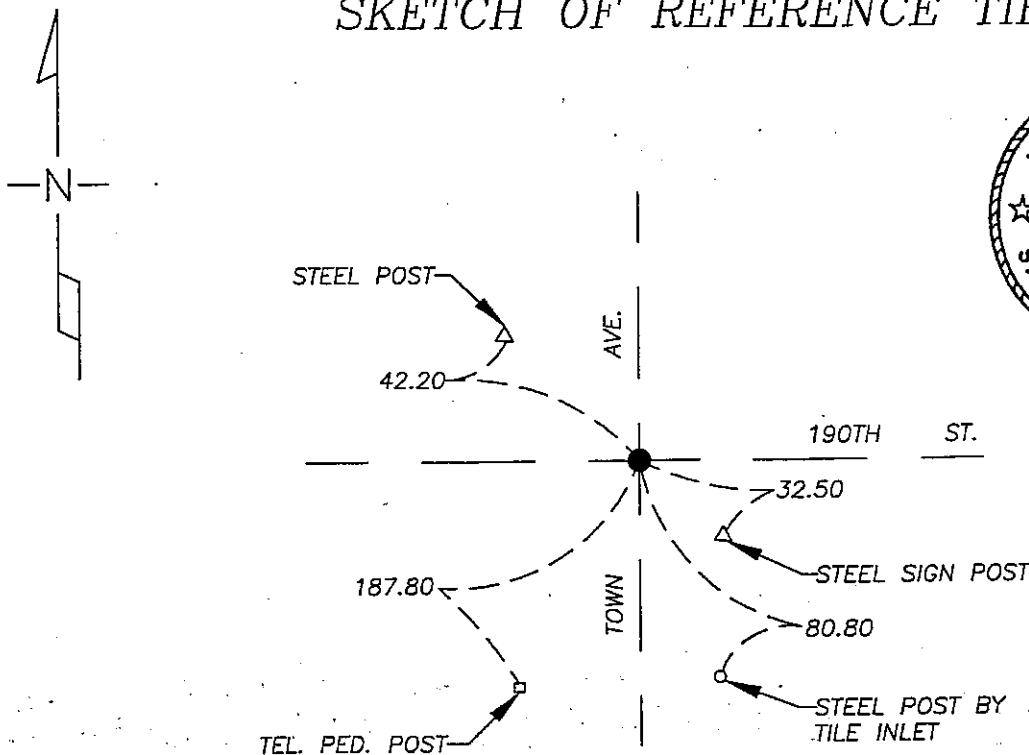
At the corner location shown on the sketch

On 9/15/05 found a Small stone below 2nd road bed & found larger stone 30" deep under small stone

left monument as found lowered monument, removed monument (explain)

On 9/15/05 placed a 1" Iron Pipe with red survey cap #43803 over top of stones.

SKETCH OF REFERENCE TIES



NAD 83 (1996)
US STATE PLANE 1983
MN SOUTH
593464.85N
2224614.49E

Statement of evidence relative to this corner location is on page 2.

I hereby certify that this document and the data contained herein was prepared by me or under my direct supervision.

Dennis Ray Esplan 10/11/05
SIGNATURE DATE

MN. LICENSE NO. 43803

Land Surveyor, Professional Engineer

County Surveyor, County Engineer

OFFICE OF THE COUNTY RECORDER

I hereby certify that this document was filed in the Co. Recorder's Office at _____ on the _____ day of _____

County Recorder _____
By _____, Deputy

DOCUMENT NO. _____

Statement of Evidence

1868 Original Township subdivision was surveyed by Jewett and Howe.

1912 Nobles Co. Hwy. Dept. records indicate a stone was found.

2005 Gerald Vickerman PLS and Jeremy Lund, with Zieske Land Surveying dug with backhoe and found a small stone below second road bed, removed and dug below and found 12" stone 30" deep. Placed 1" iron pipe with red survey cap #43903 over top of stone.

