

CERTIFICATE OF LOCATION OF GOVERNMENT CORNER

Southwest Corner of Section 21, Township 103N, Range 39W, 5th P.M.

STATE OF MINNESOTA, County of Nobles

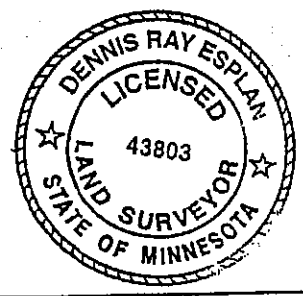
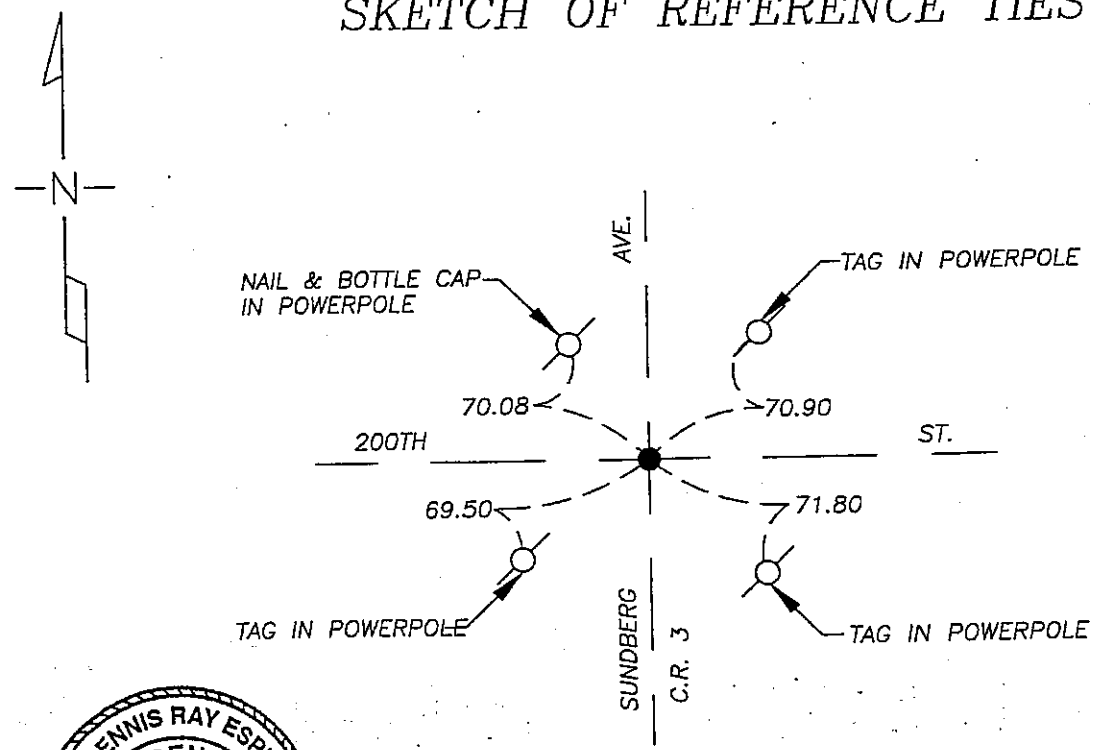
At the corner location shown on the sketch

On 9/16/05 found a Mag nail at road surface on C - C of intersection.

left monument as found lowered monument, removed monument (explain)

On _____ placed a _____

SKETCH OF REFERENCE TIES



NAD 83 (1996)
US STATE PLANE 1983
MN SOUTH
588314.84N
2219240.58E

Statement of evidence relative to this corner location is on page 2.

I hereby certify that this document and the data contained herein was prepared by me or under my direct supervision.

Dennis Ray Esplan 10/11/05
SIGNATURE DATE

MN. LICENSE NO. 43803

- Land Surveyor, Professional Engineer
- County Surveyor, County Engineer

OFFICE OF THE COUNTY RECORDER

I hereby certify that this document was filed in the Co. Recorder's Office at _____ on the

_____ day of _____

County Recorder _____
By _____, Deputy

DOCUMENT NO. _____

Statement of Evidence

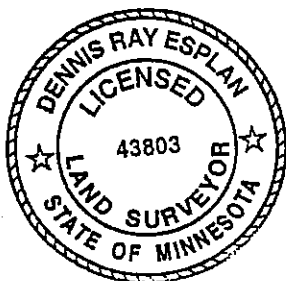
1868 Original Township subdivision was surveyed by Jewett and Howe.

1902 Nobles Co. Hwy. Dept. records indicate a stone was found.

1931, 1933, 1937, 1953, 1964, 1974 & 1986 Nobles Co. Hwy. Dept. records indicate an iron pin was found.

2000 Nobles Co. Hwy. Dept records indicate a P.K. nail was set over an iron pin after overlay

2005 Gerald Vickerman PLS and Jeremy Lund, with Zieske Land Surveying found a mag nail at road surface. Ties are consistent with Nobles County ties.



DOCUMENT NUMBER A 306828

Certified, Filed and or Recorded on
NOV. 07, 2005 AT 05:00:00PM

Lynn M. Wilson

TRACKED _____ COMPARED _____
PHOTO
FEE _____

NOBLES COUNTY RECORDER
LYNN M. WILSON
507-372-8216