

# CERTIFICATE OF LOCATION OF GOVERNMENT CORNER

Southwest Corner of Section 22, Township 103N, Range 39W, 5th P.M.

STATE OF MINNESOTA, County of Nobles

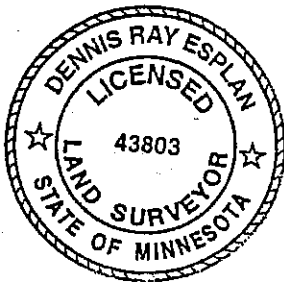
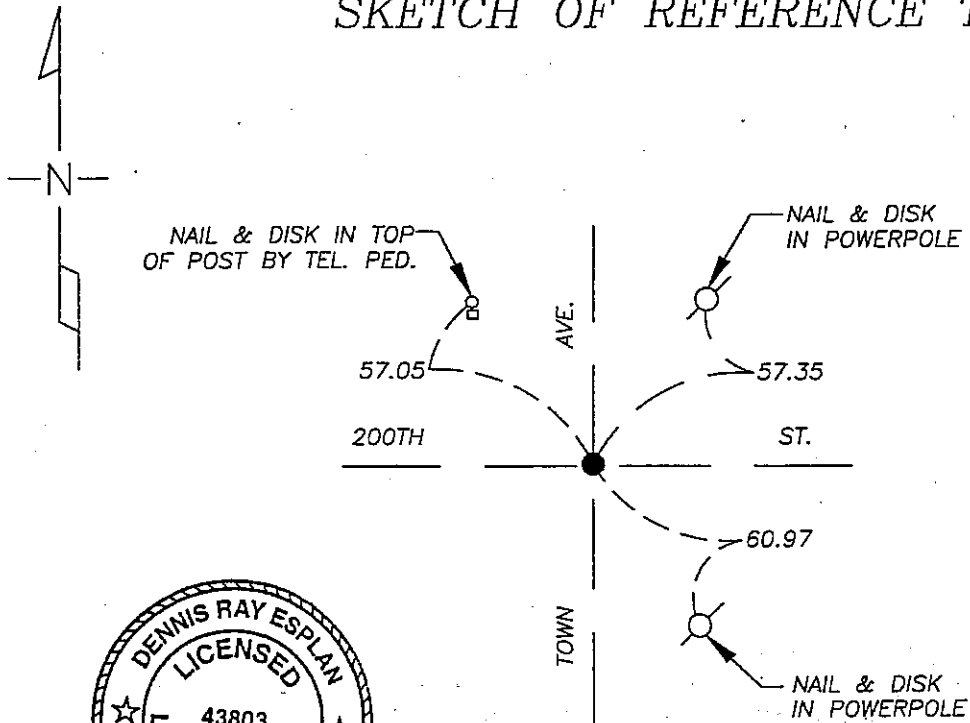
At the corner location shown on the sketch

On 9/16/05 found a Mag nail over iron at road surface on C - C of intersection.

left monument as found     lowered monument,     removed monument (explain)

On \_\_\_\_\_ placed a \_\_\_\_\_

## SKETCH OF REFERENCE TIES



NAD 83 (1996)  
US STATE PLANE 1983  
MN SOUTH  
588180.08N  
2224539.94E

Statement of evidence relative to this corner location is on page 2.

I hereby certify that this document and the data contained herein was prepared by me or under my direct supervision.

Dennis Ray 10/11/05  
SIGNATURE DATE

MN. LICENSE NO. 43803

- Land Surveyor,     Professional Engineer
- County Surveyor,     County Engineer

OFFICE OF THE COUNTY RECORDER

I hereby certify that this document was filed in the Co. Recorder's Office at \_\_\_\_\_ on the

\_\_\_\_\_ day of \_\_\_\_\_

County Recorder \_\_\_\_\_  
By \_\_\_\_\_, Deputy

DOCUMENT NO. \_\_\_\_\_

Statement of Evidence

1868 Original Township subdivision was surveyed by Jewett and Howe.

1902 Nobles Co. Hwy. Dept. records indicate a stone was found.

1931, 1953, 1960, 1974 & 2000 Nobles Co. Hwy. Dept. records indicate an iron pin was found.

2000 Nobles Co. Hwy. Dept. indicate a P.K. nail was set after overlay.

2005 Gerald Vickerman PLS and Jeremy Lund, with Zieske Land Surveying found a mag nail at road surface. Ties are consistent with Nobles County Ties.



DOCUMENT NUMBER A 306832

Certified, Filed and or Recorded on  
NOV. 07, 2005 AT 05:20:00PM

NOBLES COUNTY RECORDER  
LYNN H. WILSON  
507-372-8216

SEARCHED \_\_\_\_\_ COMPARED \_\_\_\_\_  
INDEXED RS  
FILED \_\_\_\_\_