

CERTIFICATE OF LOCATION OF GOVERNMENT CORNER

West 1/4 Corner of Section 19, Township 103N, Range 39W, 5th P.M.

STATE OF MINNESOTA, County of Nobles

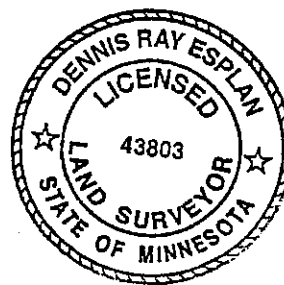
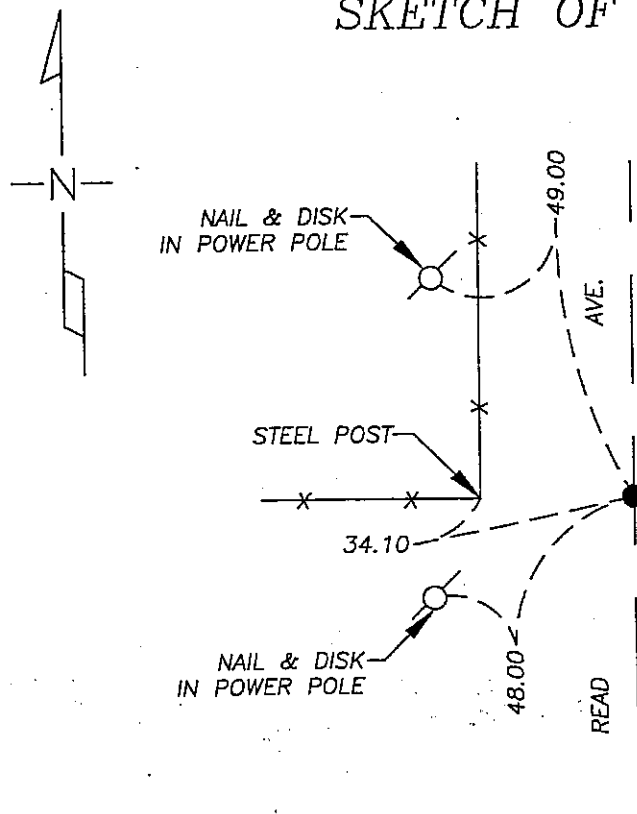
At the corner location shown on the sketch

On 9/14/05 found a Iron Stake with yellow survey cap "Bell" 12" deep in 2nd road bed.

left monument as found lowered monument, removed monument (explain)

On 9/14/05 placed a 1" Iron Pipe with red survey cap #43803 over top of stake.

SKETCH OF REFERENCE TIES



NAD 83 (1996)
US STATE PLANE 1983
MN SOUTH
591197.04 N
2208673.50 E

Statement of evidence relative to this corner location is on page 2.

I hereby certify that this document and the data contained herein was prepared by me or under my direct supervision.

Dennis Ray Esplan 10/11/05
SIGNATURE DATE

MN. LICENSE NO. 43803

Land Surveyor, Professional Engineer

County Surveyor, County Engineer

OFFICE OF THE COUNTY RECORDER

I hereby certify that this document was filed in the Co. Recorder's Office at _____ on the _____ day of _____

County Recorder _____, Deputy

By _____, Deputy
DOCUMENT NO. _____

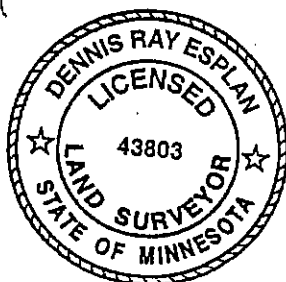
Statement of Evidence

1867 Original Township lines were surveyed by T.B. Walker.

1918 Nobles Co. Hwy. Dept. records indicate a stone was set.

1934 Nobles Co. Hwy. Dept. records indicate a stone was found.

2005 Gerald Vickerman PLS and Jeremy Lund, with Zieske Land Surveying found a "BELL" cap 12" deep. Set 1" iron pipe with red survey cap #43803.



DOCUMENT NUMBER A 306821

Certified, Filed and or Recorded on
NOV. 07, 2005 AT 04:25:00PM

TRACKED COMPARED NOBLES COUNTY RECORDER
PHOTO LYNN M. WILSON
FEE 507-372-8216