

CERTIFICATE OF LOCATION OF GOVERNMENT CORNER

West 1/4 Corner of Section 20, Township 103N, Range 39W, 5th P.M.

STATE OF MINNESOTA, County of Nobles

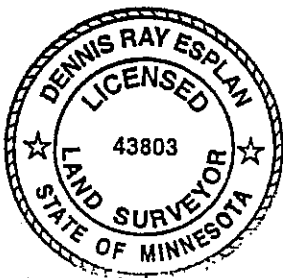
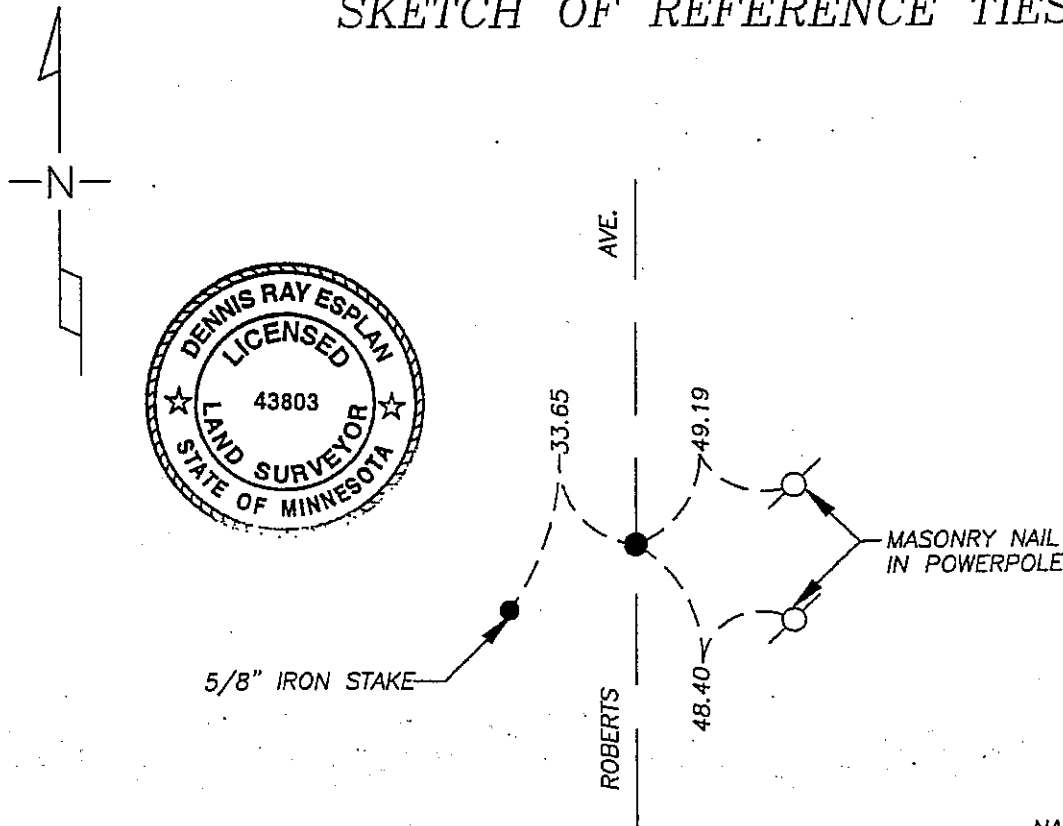
At the corner location shown on the sketch

On 9/16/05 found nothing, excavated with a backhoe and found no monument.

left monument as found lowered monument, removed monument (explain)

On 10/03/05 placed a 1" iron pipe with red survey cap #43803.

SKETCH OF REFERENCE TIES



NAD 83 (1996)
US STATE PLANE 1983
MN SOUTH
591072.98N
2213980.22E

Statement of evidence relative to this corner location is on page 2.

I hereby certify that this document and the data contained herein was prepared by me or under my direct supervision.

Dennis Ray Esplan 11/04/05
SIGNATURE DATE

MN. LICENSE NO. 43803

Land Surveyor, Professional Engineer

County Surveyor, County Engineer

OFFICE OF THE COUNTY RECORDER

I hereby certify that this document was filed in the Co. Recorder's Office at _____ on the _____ day of _____

County Recorder _____
By _____, Deputy

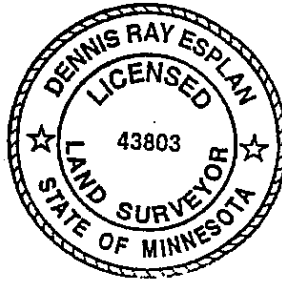
DOCUMENT NO. _____

Statement of Evidence

1867 Original Township Subdivision was surveyed by T.B. Walker.

1902 Nobles Co. Hwy. Dept. records indicate a stone was found.

2005 Gerald Vickerman PLS and Jeremy Lund, with Zieske Land Surveying, excavated with a backhoe and found nothing. Placed 1" iron pipe with red survey cap #43803 on road centerline and midway between section corners.



DOCUMENT NUMBER A 306823

Certified, Filed and or Recorded on
NOV. 07, 2005 AT 04:35:00PM

NOBLES COUNTY RECORDER

LYNN M. WILSON
507-372-8216

TRACKED COMPARED
PHOTO
FEE