

CERTIFICATE OF LOCATION OF GOVERNMENT CORNER

West 1/4 Corner of Section 22 , Township 103N , Range 39W , 5th P.M.
 STATE OF MINNESOTA, County of Nobles

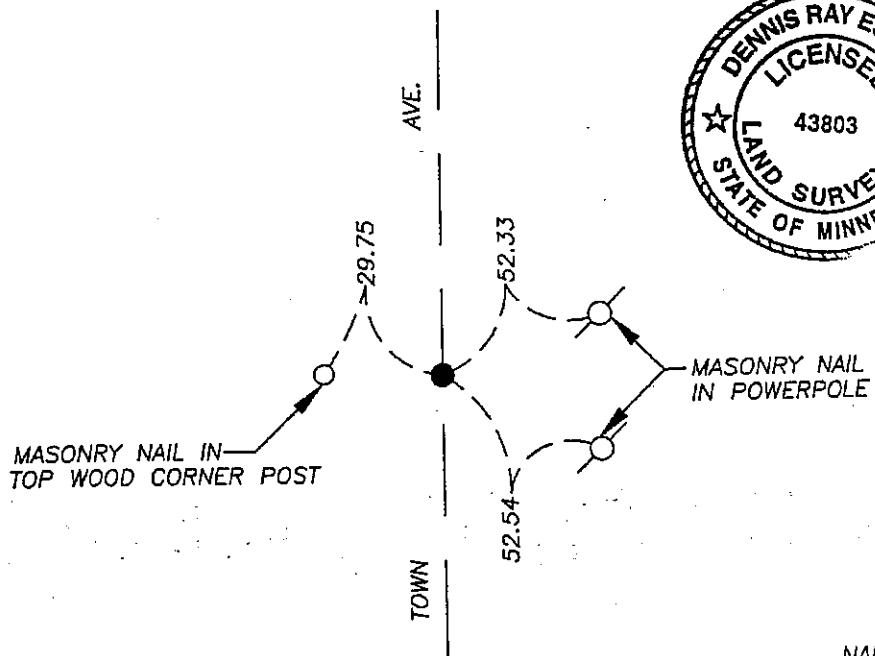
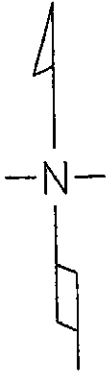
At the corner location shown on the sketch

On 9/13/05 found nothing, excavated with a backhoe and no monument was found.

left monument as found lowered monument, removed monument (explain)

On 10/03/05 placed a 1" iron pipe with red survey cap #43803.

SKETCH OF REFERENCE TIES



NAD 83 (1996)
 US STATE PLANE 1983
 MN SOUTH
 590822.47N
 224577.22E

Statement of evidence relative to this corner location is on page 2.

I hereby certify that this document and the data contained herein was prepared by me or under my direct supervision.

Dennis Ray Esplan 11/04/05
 SIGNATURE DATE

MN. LICENSE NO. 43803

- Land Surveyor, Professional Engineer
 County Surveyor, County Engineer

OFFICE OF THE COUNTY RECORDER

I hereby certify that this document was filed in the Co. Recorder's Office at _____ on the _____ day of _____

County Recorder _____
 By _____, Deputy
 DOCUMENT NO. _____

Statement of Evidence

1867 Original Township Subdivision was surveyed by T.B. Walker.

Nobles Co. Hwy. Dept. had no history of this corner.

2005 Gerald Vickerman PLS and Jeremy Lund, with Zieske Land Surveying, excavated with a backhoe and found nothing, determined corner to be lost. Placed 1" iron pipe with red survey cap #43803 midway and on line between section corners.



DOCUMENT NUMBER A 306834

Certified, Filed and or Recorded on
NOV. 07, 2005 AT 05:30:00PM

Lynn M. Wilson

TRACKED _____ COMPARED _____
PHOTO SS
FEE _____

NOBLES COUNTY RECORDER
LYNN M. WILSON
507-372-8216