

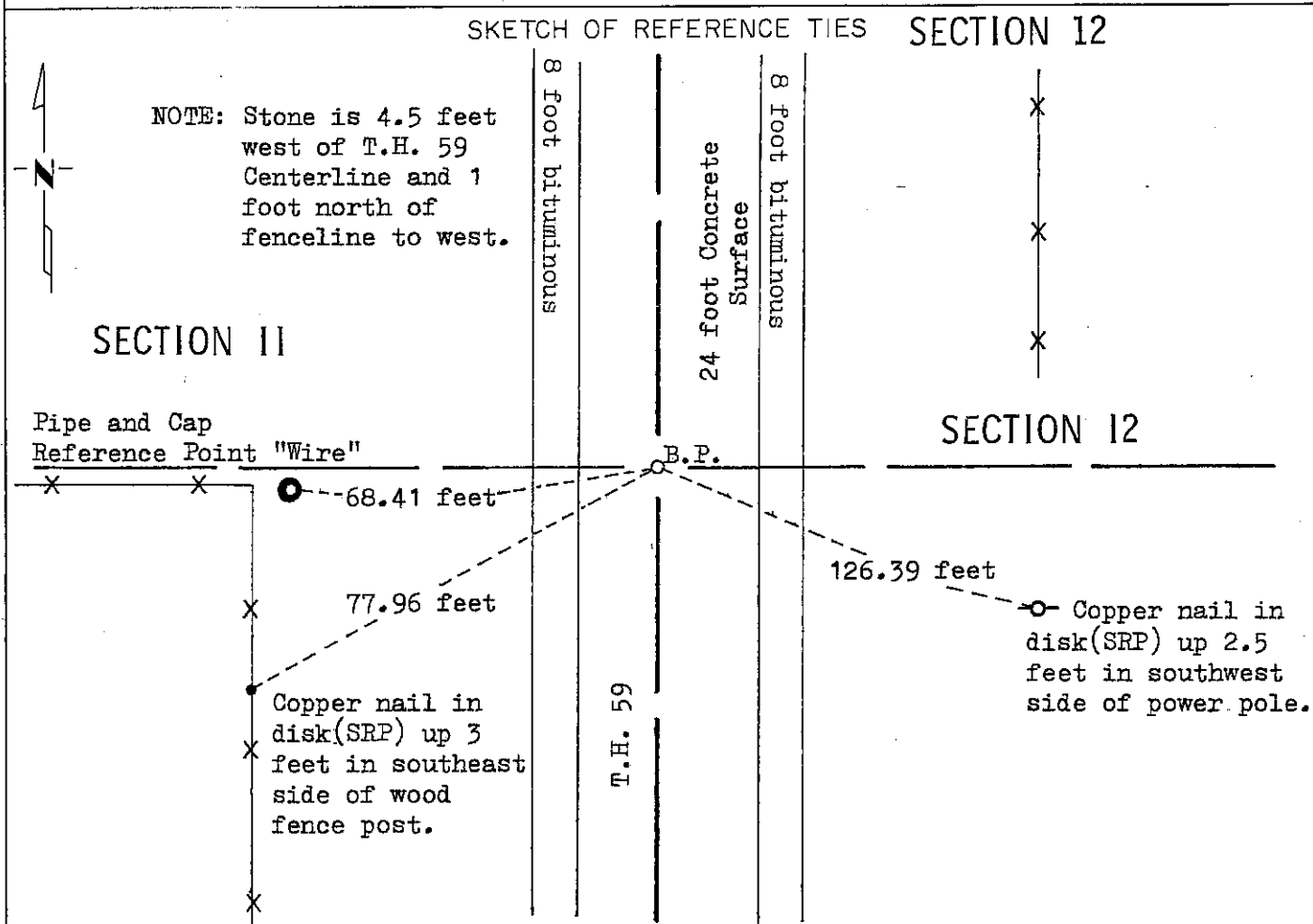
CERTIFICATE OF LOCATION OF GOVERNMENT CORNER

EAST QUARTER Corner of Section 11, Township 103N, Range 40W, 5 P.M.

STATE OF MINNESOTA, County of NOBLES

At the corner location shown on the sketch:

- On July 16, 1980 found a 10 inch by 8 inch by 14 inch stone with chiseled "+"
DATE in natural topsoil down 3 feet below surface.
 - left monument as found, lowered monument, removed monument (explain)
- On Aug. 13, 1980 placed a brass plug in concrete surface over stone.
DATE



Statement of evidence relative to this corner location is on back of page.

I hereby certify that this document and the data contained herein was prepared by me or under my direct supervision.

Allan E. Schorn 10-15-92
SIGNATURE DATE

Registration No. 11858

Land Surveyor, Professional Engineer

County Surveyor, County Engineer

OFFICE OF THE COUNTY RECORDER

County of Nobles

I hereby certify that this document was filed in the Co. Recorders office at 3:05 P.M. on the 22nd day of October A.D., 1992

County Recorder James Howard

By _____, Deputy

DOCUMENT NO. 249784

Statement of Evidence: East Quarter of Section 11, T103N, R40W, 5th P.M.

- September 19, 1869 R. H. Jewett - Original Public Land Survey notes read, "Set post in mound with pits for $\frac{1}{4}$ sec. corner."
- October 24, 1927 Minnesota Highway Department field notes read, "Stone Mon. Inp. $\frac{1}{4}$ Cor."
- March 9, 1928 Minnesota Highway Department field notes read, " $\frac{1}{2}$ corner stone mon. inp. 03.5 left of L^r 445+79.3 P.O.T."
- 1954 Minnesota Highway Department right of way map reads, "Stone mon. inp. $\frac{1}{4}$ cor. 03.5' west of L^r 445."
- 1980 The concrete pavement on T.H. 59 was broken, removed and recycled. After pavement was removed the Minnesota Department of Transportation, Windom office, searched for land corner.
- July 16, 1980 Minnesota Department of Transportation field survey crew using a tractor backhoe found a 10 inch by 8 inch by 14 inch stone with chiseled "+" in natural ground line 3 feet below surface of gravel base.
- August 13, 1980 The inplace location of the stone is compatible with the occupation lines within the section. An analysis of the Statement of Evidence and the field measurements indicate that the stone is in a reasonable location. I therefore accept the monument as the location of the land corner. A Minnesota Department of Transportation field crew placed a brass plug in surface of concrete pavement over the "+" in stone.
- For additional information, including field measurements and photographs, contact the Minnesota Department of Transportation in Windom.
- Dec. 12, 1991 Allan Schafer, with the Minnesota Department of Transportation, and crew found the brass plug and reference points inplace.