

CERTIFICATE OF LOCATION OF GOVERNMENT CORNER

East 1/4 Corner of Section 22, Township 103N, Range 40W, 5th P.M.

STATE OF MINNESOTA, County of Nobles

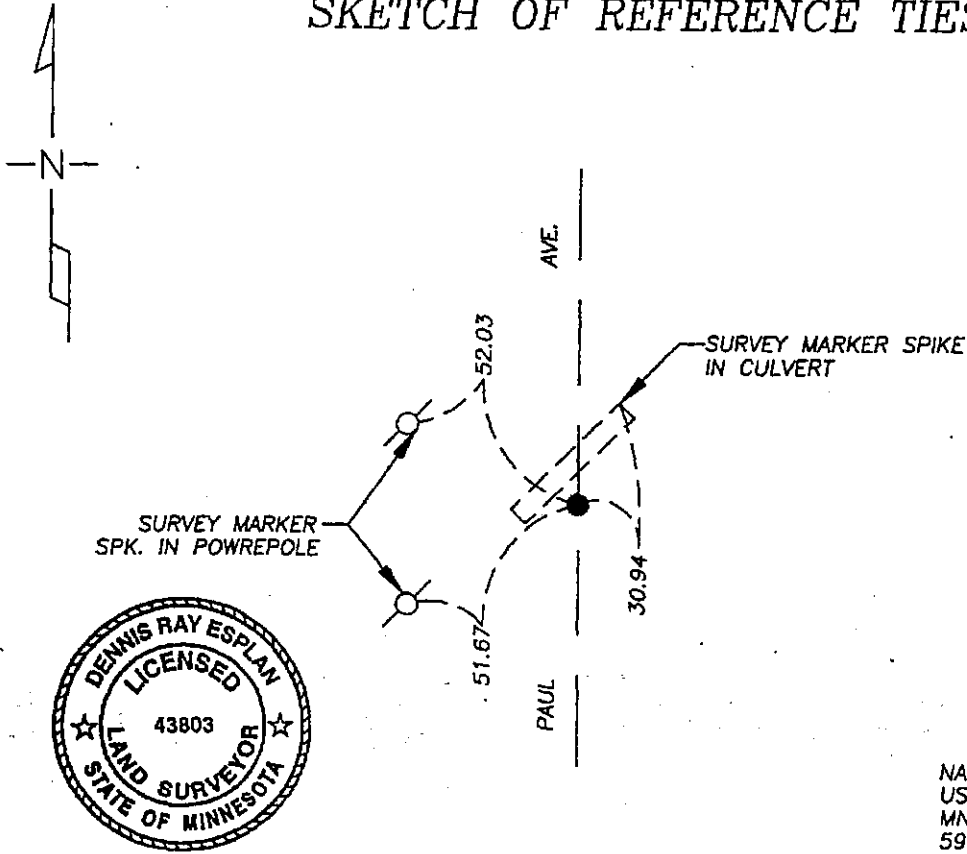
At the corner location shown on the sketch

On 9/16/05 found nothing, excavated with a backhoe and determined corner to be lost.

left monument as found lowered monument, removed monument (explain)

On 10/03/05 placed a 1" iron pipe with red survey cap #43803.

SKETCH OF REFERENCE TIES



Statement of evidence relative to this corner location is on page 2.

I hereby certify that this document and the data contained herein was prepared by me or under my direct supervision.
Dennis Ray Esplan 11/04/05
 SIGNATURE DATE

MN. LICENSE NO. 43803
 Land Surveyor, Professional Engineer
 County Surveyor, County Engineer

OFFICE OF THE COUNTY RECORDER
 I hereby certify that this document was filed in the Co. Recorder's Office at _____ on the _____ day of _____
 County Recorder _____
 By _____, Deputy
 DOCUMENT NO. _____

DOCUMENT NUMBER A 306925

Statement of Evidence

1868 Original Township lines were surveyed by Jewett & Howe.

1902 Nobles Co. Hwy. Dept. records indicate a stone was found.

2005 Gerald Vickerman PLS and Jeremy Lund, with Zieske Land Surveying, excavated with a backhoe and found nothing. Placed 1" iron pipe with red survey cap #43803 equal distance and on line between Northeast and Southeast corners of section.



DOCUMENT NUMBER A 306925

Certified, Filed and or Recorded on
NOV. 10, 2005 AT 10:45:00AM

Lynn M. Wilson _{ow}

NOBLES COUNTY RECORDER
LYNN M. WILSON
507-372-8216

TRACED _____ COMPARED _____
PHOTO
FEE _____