

CERTIFICATE OF LOCATION OF GOVERNMENT CORNER

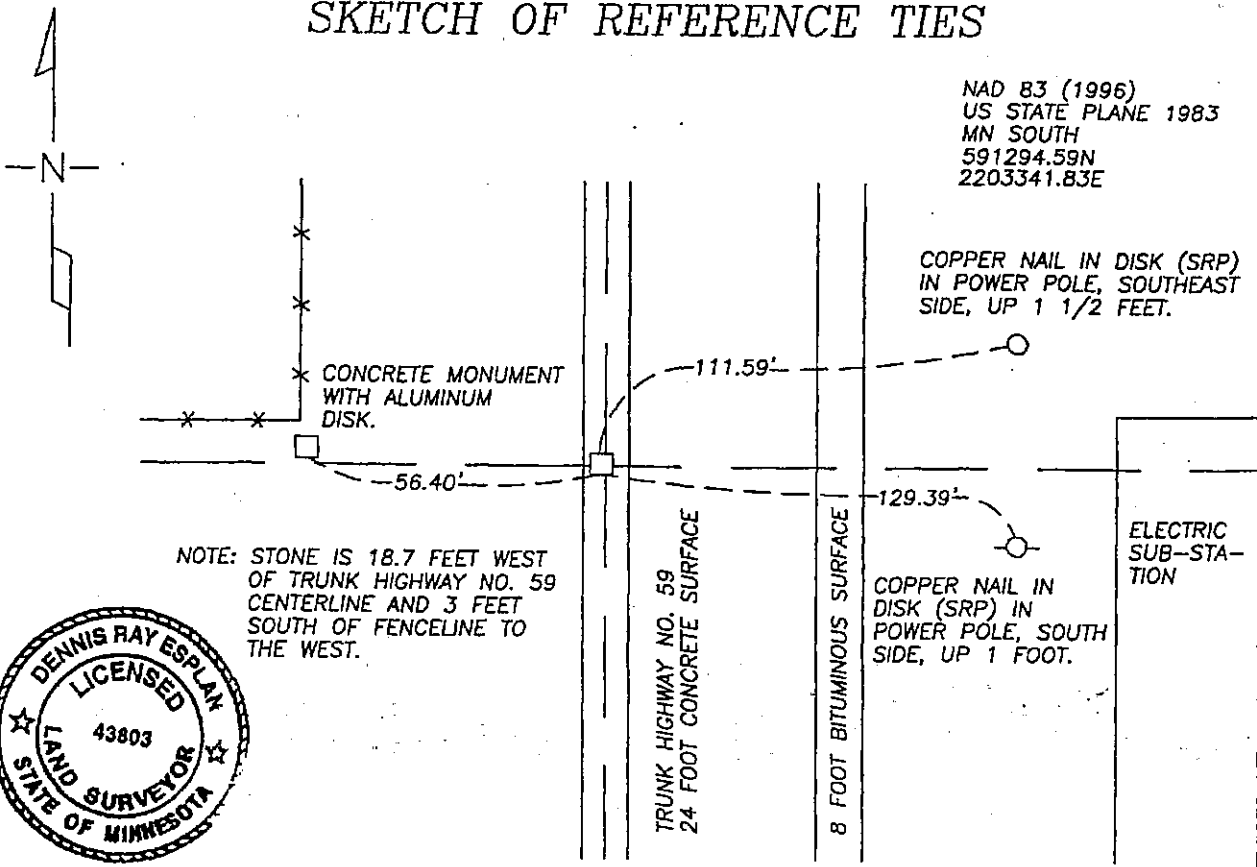
East 1/4 Corner of Section 23, Township 103N, Range 40W, 5th P.M.

STATE OF MINNESOTA, County of Nobles

At the corner location shown on the sketch

- On 6/10/1980 found a 10 inch by 8 inch stone, down 3 feet.
line with fence north.
- left monument as found lowered monument, removed monument (explain)
- On 10/10/05 placed a 1" Iron Pipe with red survey cap #43803 over top of stone.

SKETCH OF REFERENCE TIES



NAD 83 (1996)
US STATE PLANE 1983
MN SOUTH
591294.59N
2203341.83E

COPPER NAIL IN DISK (SRP)
IN POWER POLE, SOUTHEAST
SIDE, UP 1 1/2 FEET.

COPPER NAIL IN
DISK (SRP) IN
POWER POLE, SOUTH
SIDE, UP 1 FOOT.

Statement of evidence relative to this corner location is on page 2.

I hereby certify that this document and the data contained herein was prepared by me or under my direct supervision.

Dennis Ray Esplak 10/11/05
SIGNATURE DATE

MN. LICENSE NO. 43803

- Land Surveyor, Professional Engineer
- County Surveyor, County Engineer

OFFICE OF THE COUNTY RECORDER

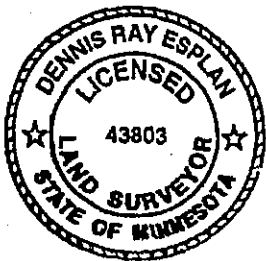
I hereby certify that this document was filed in the Co. Recorder's Office at _____ on the _____ day of _____

County Recorder _____
By _____, Deputy
DOCUMENT NO. _____

DOCUMENT NUMBER A 306928

Statement of Evidence: East Quarter 23, T103N, R40W, 5th P.M.

- September 19, 1868 Jewett & Howe were the Original Public Land surveyors. Notes By R.H.I. Jewett state "Set post in mound with pits for 1/4 sec. cor.
- October 14, 1893 M.S. Smith, County Surveyor, made a survey on section 14. Notes on survey records indicate a "stone" was set at east quarter of section 23. Location for stone was determined by using proportional distances between southeast corner 23 and east quarter section 14.
- June 26, 1902 M.S. Smith notes a "stone". Measurements 2626.3 feet to section corners north and south.
- October 23, 1917 Wm. A. Saxon, County Surveyor, and J.H. Maxwell, Chairman made a survey of section 24 at the request of Ed Daniels, owner of west 1/2 of the section. He thinks the "old stone gone."
- September 3, 1934 G. D. McMurty, survey on section 24 for Daniels and Luke. He certifies on survey record there is a "stone" and he also "set pipe".
- 1974 Nobles County Highway Department "Iron pin inp."
- June 10, 1980 Minnesota Department of Transportation field crew using a tractor backhoe found a 10 inch by 8 inch stone at natural ground line 3 feet below the surface of the shoulder.
- The inplace location of the stone is compatible with the occupation lines within the section. An analysis of the Statement of Evidence and field measurements indicate that the stone is in a reasonable location. I therefore accept the monument was the location of the land corner as used in 1893, 1902, and 1934.
- October 10, 2005 Greg Zieske and Jeremy Lund, with Zieske Land Surveying, set 1" iron pipe with red survey cap #43803 as per ties shown on sheet 1.



DOCUMENT NUMBER A 306928

Certified, Filed and or Recorded on
NOV. 10, 2005 AT 11:00:00AM

Lynn M. Wilson ⁰³

TRACKED _____ COMPARED _____
PHOTO SS
FEE _____

NOBLES COUNTY RECORDER
LYNN M. WILSON
507-372-8216