

# CERTIFICATE OF LOCATION OF GOVERNMENT CORNER

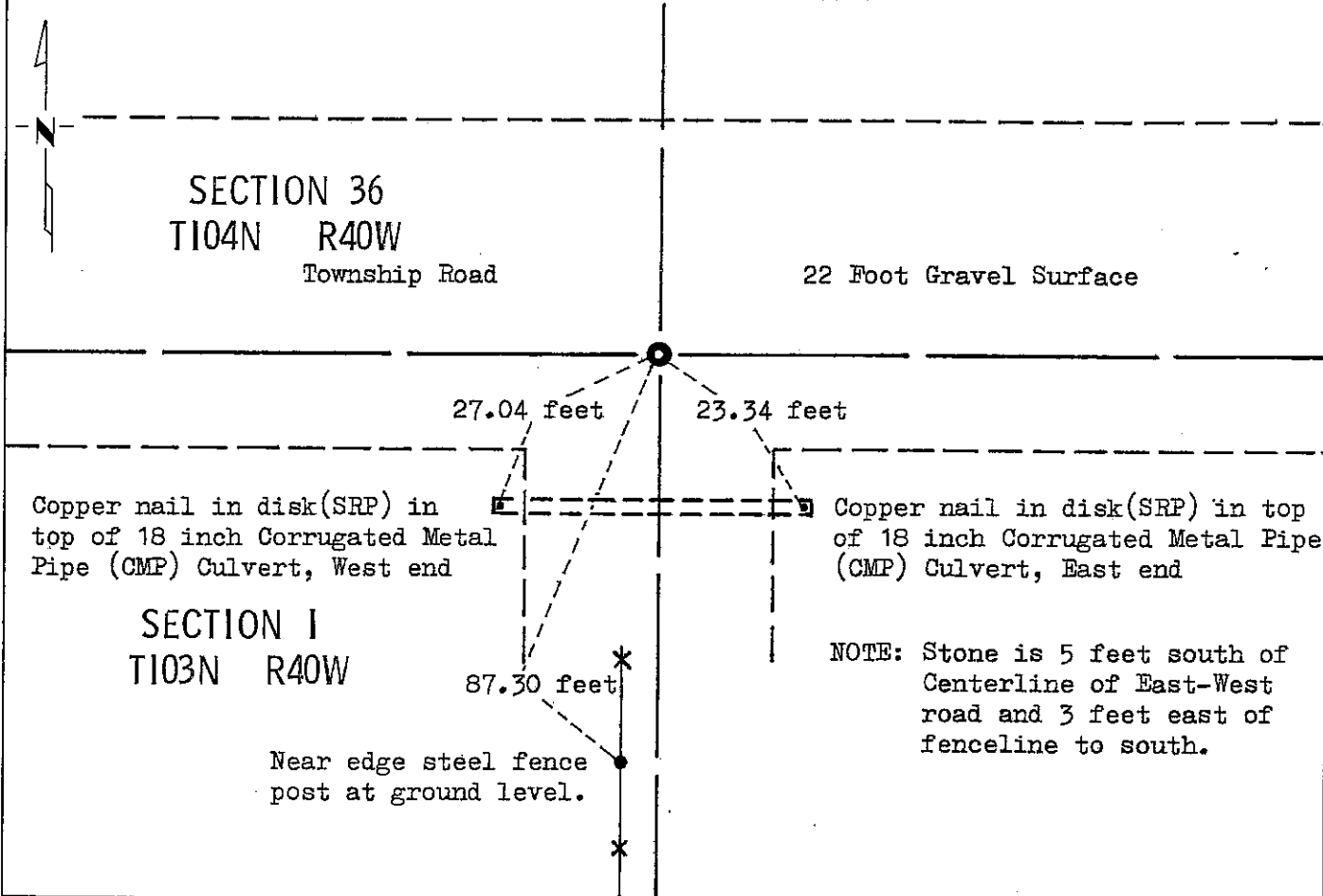
NORTH QUARTER Corner of Section 1, Township 103, Range 40, 5 P.M.

STATE OF MINNESOTA, County of NOBLES

At the corner location shown on the sketch:

- On Nov. 5, 1980 found a 8 inch by 8 inch by 14 inch stone with a chiseled "X"  
DATE  
down 25 inches below surface.
  - left monument as found,  lowered monument,  removed monument (explain)
- On Nov. 5, 1980 placed a M.H.D. Cast Iron Monument with chiseled "+"  
DATE  
foot below surface.

### SKETCH OF REFERENCE TIES



Statement of evidence relative to this corner location is on back of page.

I hereby certify that this document and the data contained herein was prepared by me or under my direct supervision.

Allan E. Schorn 10-15-92  
SIGNATURE DATE

Registration No. 11858

- Land Surveyor,  Professional Engineer
- County Surveyor,  County Engineer

### OFFICE OF THE COUNTY RECORDER

County of Nobles

I hereby certify that this document was filed in the Co. Recorders office at 2:55 P. .M. on the 22nd day of October A.D., 1992

County Recorder James Howard

By \_\_\_\_\_, Deputy

DOCUMENT NO. 249782

Statement of Evidence: North Quarter of Section 1, R103N, T40W, 5th. P.M.

- 1867 T. B. Walker - Original Public Land Survey notes read, "¼ Sec. Cor. - Post in mound."
- August 22, 1899 M. S. Smith, County Surveyor, indicates he found original "stake" at North Quarter Corner Section 1. Distances are 2641 feet to Northeast Corner of Section 2 and 2636 feet to Northeast Corner Section 1.
- 1936 Nobles County Highway Department land corner records read, "Stone."
- November 5, 1980 Minnesota Department of Transportation field crew using a tractor backhoe found an 8 inch by 8 inch by 14 inch stone with "+" 25 inches below gravel surface. Placed an Minnesota Highway Department Cast Iron Monument with "+" 0.3 foot below gravel surface.

The in-place location of the stone with a "+" chiseled in it is compatible with the occupation lines within the section. An analysis of the Statement of Evidence and the field measurements indicate that the stone with a "+" chiseled in it is a reasonable location. I therefore accept the stone as the location of the land corner and placed a Minnesota Highway Department Cast Iron Monument over the "+" in stone.

For additional information, including field measurements and photographs, contact the Minnesota Department of Transportation in Windom.

- Dec. 12, 1991 Al Schafer, with the Minnesota Department of Transportation, and crew found the monument down 0.8 tenths of an inch below the gravel road surface. The three reference ties are in-place.