

CERTIFICATE OF LOCATION OF GOVERNMENT CORNER

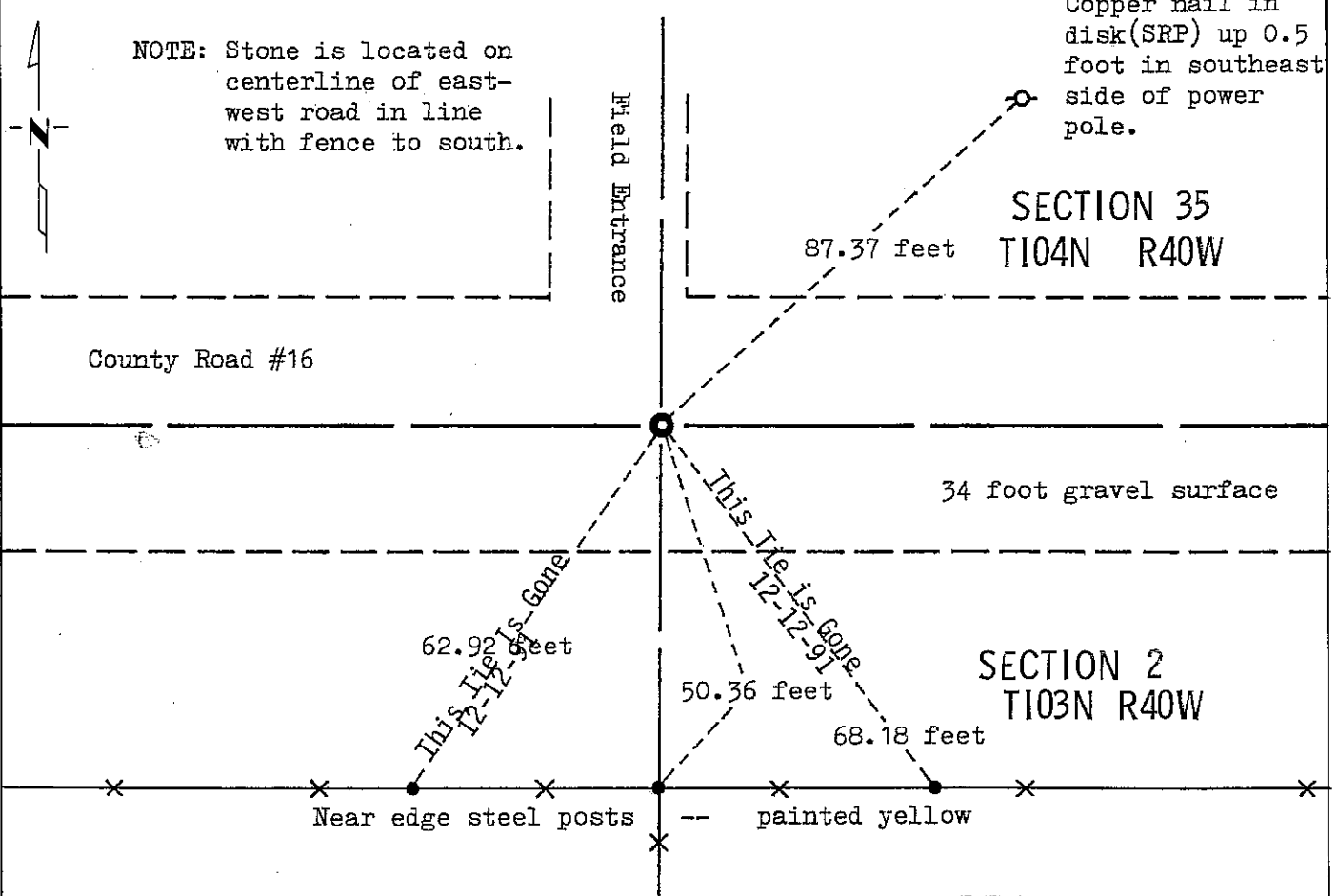
NORTH QUARTER Corner of Section 2, Township 103, Range 40, 5 P.M.

STATE OF MINNESOTA, County of NOBLES

At the corner location shown on the sketch:

- On Nov. 6, 1980 found a spike down 0.3 foot over a 15 inch by 11 inch by 11 inch stone with chiseled "X" down 20 inches below surface.
DATE
 left monument as found, lowered monument, removed monument (explain)
- On Nov. 6, 1980 placed a M.H.D. Cast Iron Monument with chiseled "X" down 0.3 foot below surface (removed spike).
DATE

SKETCH OF REFERENCE TIES



Statement of evidence relative to this corner location is on back of page.

I hereby certify that this document and the data contained herein was prepared by me or under my direct supervision.

Allan E. Schorn 10-15-92
SIGNATURE DATE

Registration No. 11858

- Land Surveyor, Professional Engineer
- County Surveyor, County Engineer

OFFICE OF THE COUNTY RECORDER

County of Nobles

I hereby certify that this document was filed in the Co. Recorders office at 3:00 P. M. on the 22nd day of October A.D., 1992

County Recorder James Howard

By _____, Deputy

DOCUMENT NO. 249783

Statement of Evidence: North Quarter Corner, Section 2, T103N, R40W, 5th P.M.

- July 16, 1867 T. B. Walker - Original Public Land Survey notes read, " $\frac{1}{2}$ Sec. Cor. - Post in mound."
- May 11, 1888 M. S. Smith, County Surveyor, field notes read, "Orig. stake M & P, set stone." Distance 2641 to Northeast 2.
- 1936 Nobles County Highway Department land corner records read, "Stone."
- 1959 Nobles County Highway Department land corner records read, "Stone in 1959. Placed wood stake."
- 1961 Nobles County Highway Department land corner records read, "Stake in 1961. Placed Iron Pin."
- November 6, 1980 Minnesota Department of Transportation field survey crew using a tractor backhoe found a spike 0.3 foot below gravel surface and a 15 inch by 11 inch by 11 inch stone with "+" 20 inches below gravel surface. Removed spike and placed an Minnesota Highway Department Cast Iron Monument 0.3 foot below gravel surface.
- An analysis of the Statement of Evidence and the field measurements indicate that the in place location of the Cast Iron Monument provides a continuous chain of perpetuation of the Original Public Land Survey corner
- For additional information, including field measurements and photographs, contact the Minnesota Department of Transportation in Windom.
- Dec. 12, 1991 Al Schafer, with the Minnesota Department of Transportation, and crew found the monument and two of the reference ties.