

CERTIFICATE OF LOCATION OF GOVERNMENT CORNER

North 1/4 Corner of Section 20, Township 103N, Range 40W, 5th P.M.

STATE OF MINNESOTA, County of Nobles

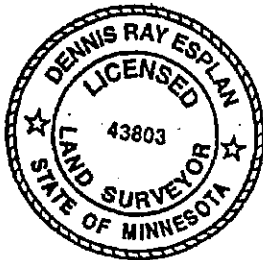
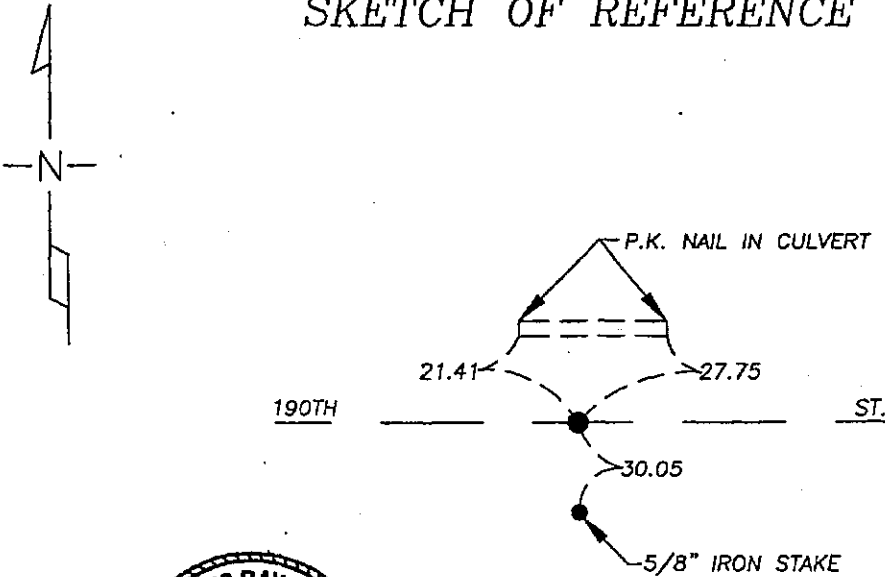
At the corner location shown on the sketch

On 9/16/05 found nothing, excavated with a backhoe and no monument was found.

left monument as found lowered monument, removed monument (explain)

On 10/03/05 placed a 1" iron pipe with red survey cap #43803.

SKETCH OF REFERENCE TIES



NAD 83 (1996)
US STATE PLANE 1983
MN SOUTH
594344.84N
2184975.39E

Statement of evidence relative to this corner location is on page 2.

I hereby certify that this document and the data contained herein was prepared by me or under my direct supervision.

Dennis Ray Esplan 11/04/05
SIGNATURE DATE

MN. LICENSE NO. 43803

- Land Surveyor, Professional Engineer
 County Surveyor, County Engineer

OFFICE OF THE COUNTY RECORDER

I hereby certify that this document was filed in the Co. Recorder's Office at _____ on the _____ day of _____

County Recorder _____
By _____, Deputy
DOCUMENT NO. _____

DOCUMENT NUMBER A 306917

Statement of Evidence

1868 Original Township lines were surveyed by Jewett & Howe.

1918 Nobles Co. Hwy. Dept. records indicate a stone was set.

2005 Gerald Vickerman PLS and Jeremy Lund, with Zieske Land Surveying, excavated with a backhoe and found nothing. Placed 1" iron pipe with red survey cap #43803 on road centerline and midway between section corners.



DOCUMENT NUMBER A 306917

Certified, Filed and or Recorded on
NOV. 10, 2005 AT 10:05:00AM

Lynn M. Wilson _{pw}

TRACKED _____	COMPARED _____	NOBLES COUNTY RECORDER
PHOTO <u> <i>LL</i> </u>		LYNN M. WILSON
FEE _____		507-372-8216