

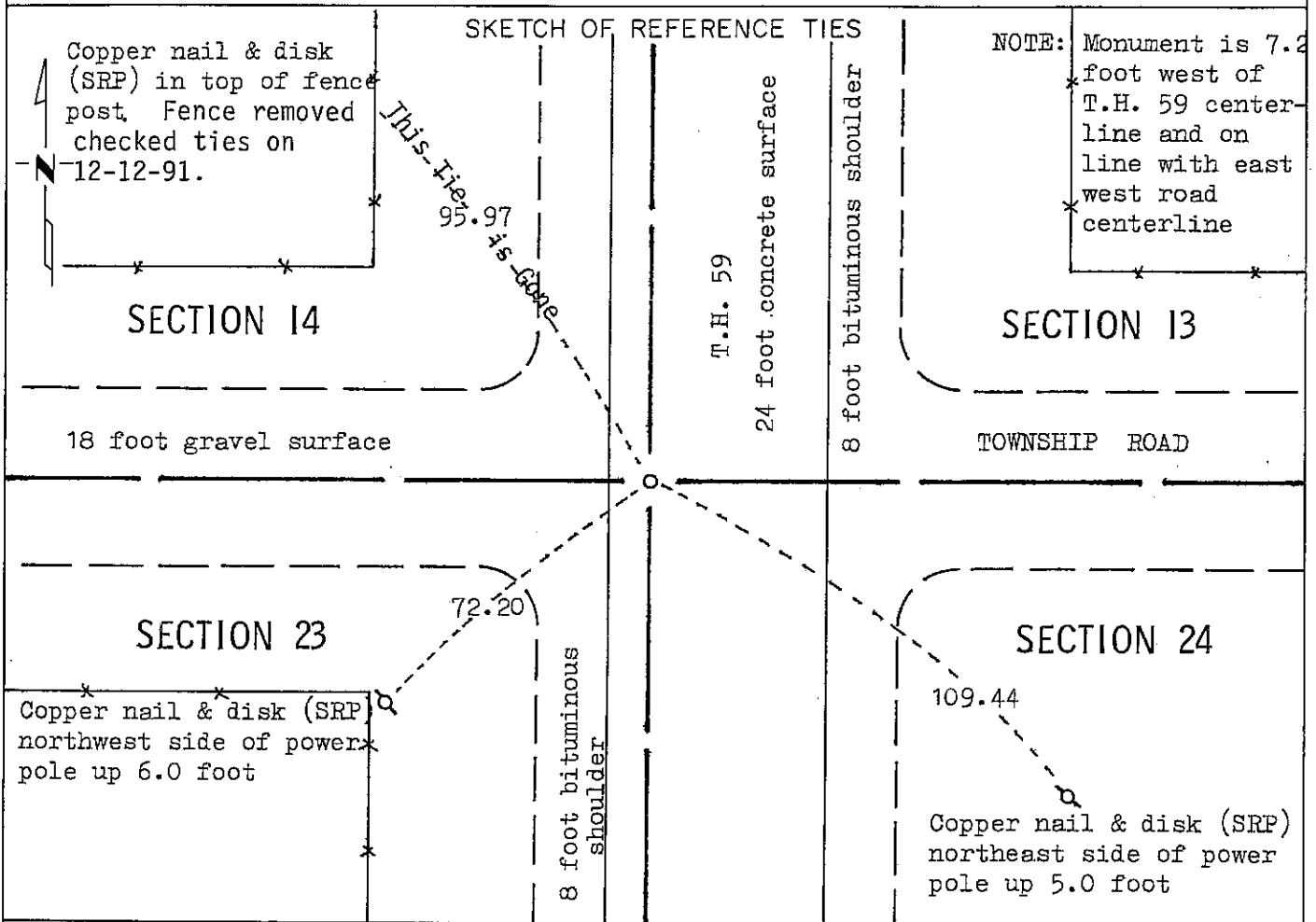
CERTIFICATE OF LOCATION OF GOVERNMENT CORNER

NORTHEAST Corner of Section 23, Township 103N, Range 40W, 5 P.M.

STATE OF MINNESOTA, County of NOBLES

At the corner location shown on the sketch:

- On Jul. 16, 1980 found a 6 inch by 24 inch concrete monument with rebar down 1.5
DATE foot over 12 inch by 12 inch by 12 inch stone with + down 6.0 foot
- left monument as found, lowered monument, removed monument (explain)
- On Aug. 12, 1980 placed a Brass plug
DATE _____



Statement of evidence relative to this corner location is on back of page.

I hereby certify that this document and the data contained herein was prepared by me or under my direct supervision.

Allan E. Schorn SIGNATURE 10-15-92 DATE

Registration No. 11858

- Land Surveyor, Professional Engineer
- County Surveyor, County Engineer

OFFICE OF THE COUNTY RECORDER

County of Nobles

I hereby certify that this document was filed in the Co. Recorders office at 3:15 P. .M. on the 22nd day of October, A.D., 1992

County Recorder James Howard

By _____, Deputy

DOCUMENT NO. 249786

Statement of Evidence: Northeast Corner 23, T103N, R40W, 5th P.M.

- September 19, 1868 George Howe and Richard Jewett were the Original Government Land surveyors to subdivide this township. Original notes state "Set post in mound with pits for corner to Secs. 13, 14, 23 & 24. Surface nearly level. Soil No. 1." (Measurement is 5227 feet to section corner west and 5333 feet to section corner at range line east.)
- October 14, 1893 M. S. Smith, County Surveyor, made a survey on section 14. He notes there is a "light stone" and a "black stone" at the southeast corner. The drawing depicts the "black stone" slightly southeast of the "light stone". Measurements on drawing suggest this corner was re-established by "lost location". Measurements are 2627.3 feet to quarter corners north or south.
- October 14, 1903 M. S. Smith, County Surveyor, made a survey on section 14. Information is substantially same as 1893 survey by Smith.
- October 23, 1917 Wm. A. Saxon, County Surveyor, and his chairman J. H. Maxwell made a survey on section 24. Notation on plat indicates "old stone found" at northwest corner of section 24.
- May 20, 1929 Minnesota Highway Department survey to relocate T.H. 16. "Stone marked +" replaced with "concrete monument."
- September 3, 1934 G. D. McMurtry, County Surveyor, made a survey on section 24. Survey record indicate he found "stone".
- 1955 Minnesota Highway Department construction plans. "Stone Monument".
- July 16, 1980 Minnesota Department of Transportation field survey crew using a tractor backhoe found a 6 inch by 24 inch concrete monument with rebar 1½ feet below surface of gravel base and directly over + on a 12 inch by 12 inch by 12 inch stone imbedded in natural topsoil 6 feet below surface.
- August 12, 1980 A brass plug was placed directly over the + in the stone and flush with the concrete pavement.
- The inplace location of the stone marked + is compatible with the occupation lines within the section. An analysis of the Statement of Evidence and the field measurements indicate that the stone marked + is in a reasonable location. I therefore accept the monument as the location of the land corner as used in 1893.
- For additional information, including field measurements and photographs, contact the Minnesota Department of Transportation in Windom.
- Dec. 12, 1991 Al Schafer, with the Minnesota Department of Transportation, and crew found the brass plug and two of the reference ties.