

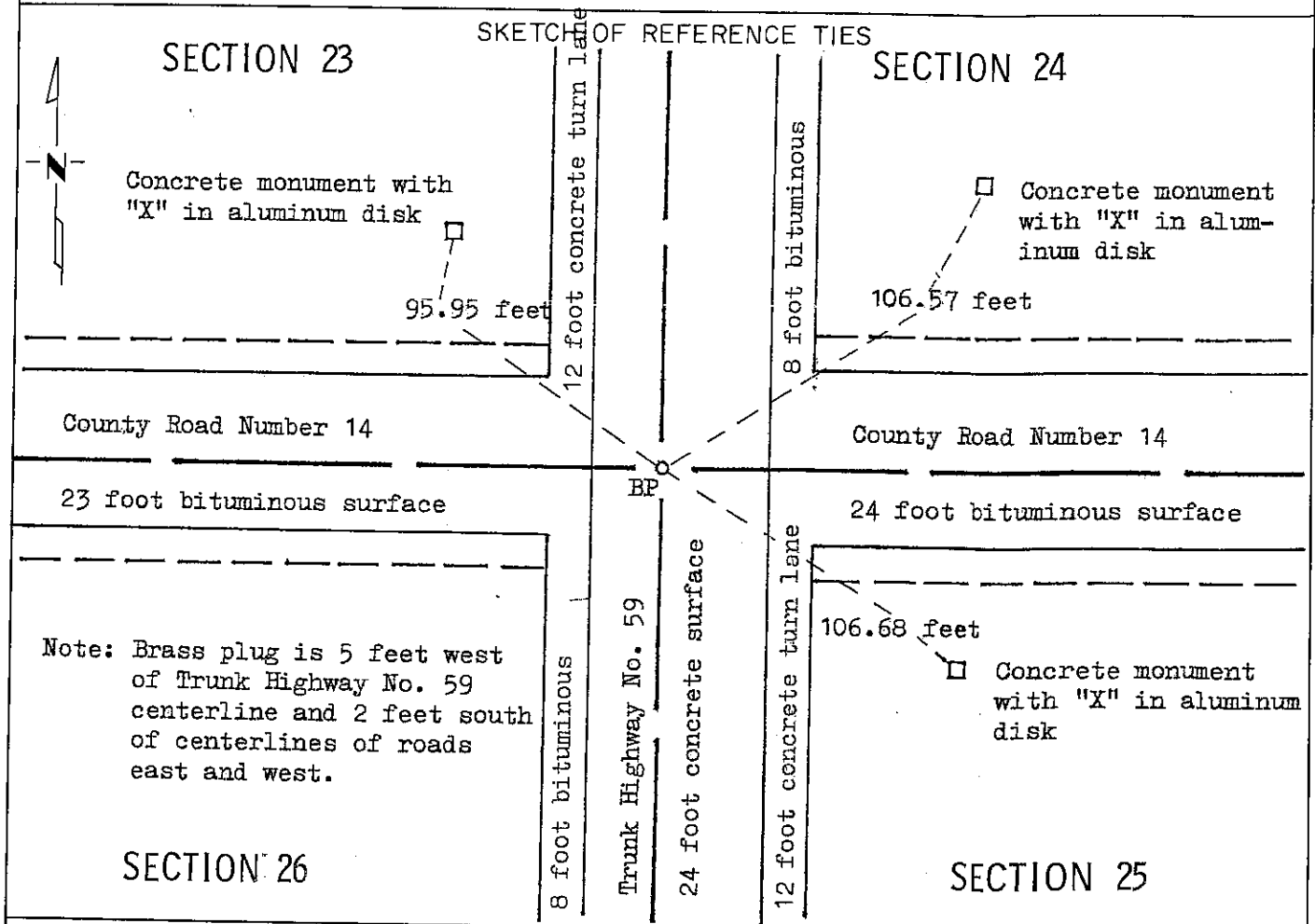
# CERTIFICATE OF LOCATION OF GOVERNMENT CORNER

NORTHEAST Corner of Section 26, Township 103N, Range 40 W, 5 P.M.

STATE OF MINNESOTA, County of NOBLES

At the corner location shown on the sketch:

- On July 8, 1980 found a 1 1/4 foot by 1 1/2 foot by 2 foot stone with chiseled "+",  
DATE  
down 3 feet. Bottom of stone is in natural ground.
- left monument as found,  lowered monument,  removed monument (explain)
- On Aug. 8, 1980 placed a brass plug  
DATE



Statement of evidence relative to this corner location is on back of page.

I hereby certify that this document and the data contained herein was prepared by me or under my direct supervision.

Allan E. Schoon 10-15-92  
SIGNATURE DATE

Registration No. 11858

- Land Surveyor,  Professional Engineer
- County Surveyor,  County Engineer

OFFICE OF THE COUNTY RECORDER

County of Nobles

I hereby certify that this document was filed in the Co. Recorders office at 3:20 P. M. on the 22nd day of October A.D., 1992

County Recorder Jasper Howard

By \_\_\_\_\_, Deputy

DOCUMENT NO. 249787

Statement of Evidence: Northeast Corner 26, T103N, R40W, 5th P.M.

- September 19, 1868 Jewett and Howe, Original Public Land Surveyors. An excerpt from R.H.L. Jewett's notes read "Set post in mound with pits for corner to secs. 23, 24, 25 & 26."
- June 26, 1902 M. S. Smith, County Surveyor, made a survey on section 23. Note on survey record indicates "Orig." and "Stone" at southeast corner.
- 1912 Nobles Conty record "Stone inplace"
- October 23, 1917 Wm. A. Saxon, County Surveyor, made a survey on section 24 a notation on record of survey "old stone found" at southwest corner of section.
- March 9, 1928 Minnesota Highway Department survey to relocate T.H. 16 "stone mon. inp."
- May 20, 1929 Minnesota Highway Department notes "sec cor conc mon."
- September 3, 1934 G. D. McMurtry, County Surveyor, made a survey on section 24. Noted on survey record "stone" at southwest corner.
- 1955 Minnesota Highway Department construction plans "2X2" hub down 2 feet and stone below" and "brass plug in pavement."
- July 8, 1980 Minnesota Department of Transportation field survey crew could find no brass plug in concrete pavement. After the concrete was removed to be recycled the survey crew dug with a tractor backhoe and found the stone set by Smith in 1902. The stone has a chiseled + on it and is at natural ground line. On August 8, 1981 a brass plug was placed in the concrete pavement directly over the + on the stone.
- An analysis of the Statement of Evidence and the field measurements indicate that the inplace location of the brass plug over the stone provides a continuous chain of perpetuation of the original Public Land Survey corner.
- For additional information, including field measurements and photographs, contact the Minnesota Department of Transportation in Windom.
- Dec. 12, 1991 Allan Schafer, with the Minnesota Department of Transportation, and crew found the brass plug and three ties inplace.