

DOCUMENT NUMBER A 306912

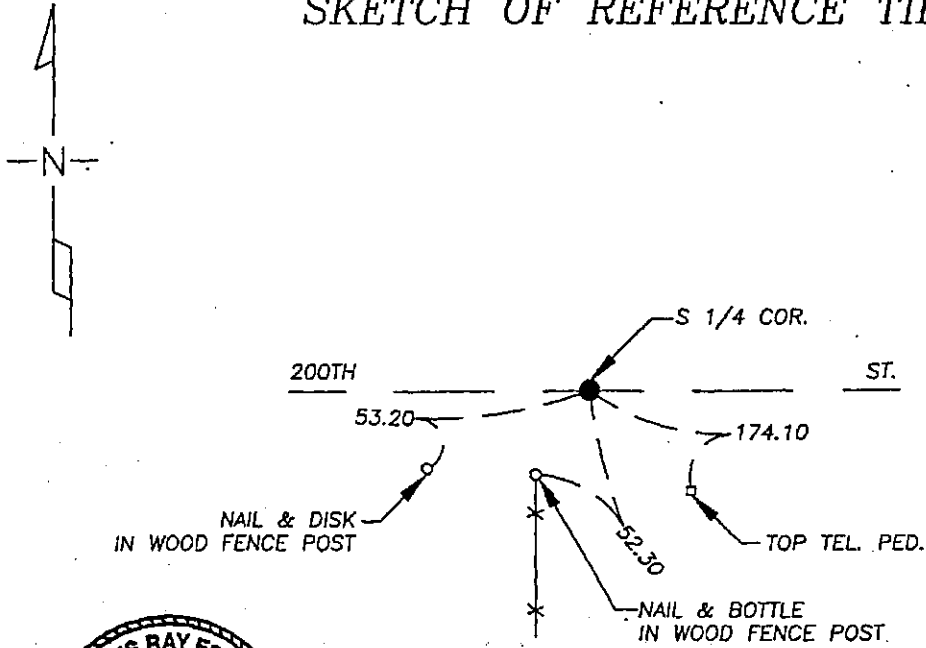
CERTIFICATE OF LOCATION OF GOVERNMENT CORNER

South 1/4 Corner of Section 19, Township 103N, Range 40W, 5th P.M.
STATE OF MINNESOTA, County of Nobles

At the corner location shown on the sketch

- On 9/16/05 found a P.K. nail over iron stake at road surface, on E of road and 5' east of fence line south.
- left monument as found lowered monument, removed monument (explain)
- On _____ placed a _____

SKETCH OF REFERENCE TIES



NAD 83 (1996)
US STATE PLANE 1983
MN SOUTH
589213.93N
2179524.10E

Statement of evidence relative to this corner location is on page 2.

I hereby certify that this document and the data contained herein was prepared by me or under my direct supervision.

Dennis Ray Esplan 11/04/05
SIGNATURE DATE

MN. LICENSE NO. 43803

- Land Surveyor, Professional Engineer
- County Surveyor, County Engineer

OFFICE OF THE COUNTY RECORDER

I hereby certify that this document was filed in the Co. Recorder's Office at _____ on the _____ day of _____

County Recorder _____
By _____, Deputy
DOCUMENT NO. _____

Statement of Evidence

1868 Original Township Subdivision was surveyed by Jewett & Howe.

1914 Nobles Co. Hwy. Dept. records indicate a stone was set.

1919 & 1929 Nobles Co. Hwy. Dept. records indicate a stone was found.

1958 Nobles Co. Hwy. Dept. records indicate a stake was set.

1968 & 1980 Nobles Co. Hwy. Dept. records indicate an iron pin was found.

1992 & 2003 Nobles Co. Hwy. Dept. records indicate P.K. nails were set after overlays.

2005 Gerald Vickerman PLS and Jeremy Lund, with Zieske Land Surveying, found a P.K. nail at road surface.



DOCUMENT NUMBER A 306912

Certified, Filed and or Recorded on
NOV. 10, 2005 AT 09:40:00AM

Lynn M. Wilson
BW

TRACKED _____ COMPARED _____ NOBLES COUNTY RECORDER
PHOTO LYNN M. WILSON
FEE _____ 507-372-8216