

# CERTIFICATE OF LOCATION OF GOVERNMENT CORNER

South 1/4 Corner of Section 21, Township 103N, Range 40W, 5th P.M.

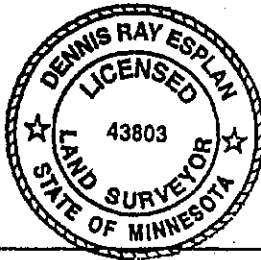
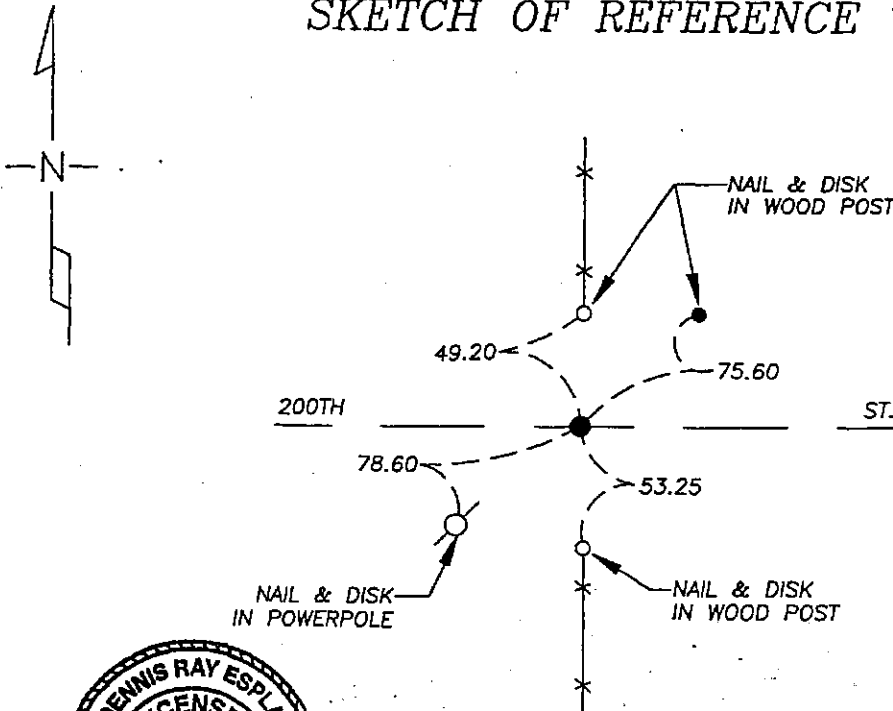
STATE OF MINNESOTA, County of Nobles

At the corner location shown on the sketch

- On 9/16/05 found a P.K. nail over iron stake at road surface on E of road and in line with fence north & south.
- left monument as found       lowered monument,       removed monument (explain)

On \_\_\_\_\_ placed a \_\_\_\_\_

## SKETCH OF REFERENCE TIES



NAD 83 (1996)  
US STATE PLANE 1983  
MN SOUTH  
588936.98N  
2190133.35E

Statement of evidence relative to this corner location is on page 2.

I hereby certify that this document and the data contained herein was prepared by me or under my direct supervision.

Dennis Ray Esplan      11/04/05  
SIGNATURE      DATE

MN. LICENSE NO. 43803

- Land Surveyor,       Professional Engineer  
 County Surveyor,       County Engineer

OFFICE OF THE COUNTY RECORDER

I hereby certify that this document was filed in the Co. Recorder's Office at \_\_\_\_\_ on the \_\_\_\_\_ day of \_\_\_\_\_

County Recorder \_\_\_\_\_  
By \_\_\_\_\_, Deputy  
DOCUMENT NO. \_\_\_\_\_

DOCUMENT NUMBER A 306920

Statement of Evidence

1868 Original Township Subdivision was surveyed by Jewett & Howe.

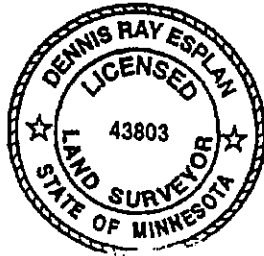
1904 Nobles Co. Hwy. Dept. records indicate that a stone was found.

1929 Nobles Co. Hwy. Dept. records indicate a stake was found.

1958, 1968, 1980 & 1992 Nobles Co. Hwy. Dept. records indicate an iron pin was found.

2003 Nobles Co. Hwy. Dept. records indicate a P.K. nail was set after overlay.

2005 Gerald Vickerman PLS and Jeremy Lund, with Zieske Land Surveying, found a P.K. nail .



DOCUMENT NUMBER A 306920

Certified, Filed and or Recorded on  
NOV. 10, 2005 AT 10:20:00AM

*Lynn M. Wilson* <sup>00</sup>

TRACKER \_\_\_\_\_ COMPARED \_\_\_\_\_  
PHOTO AS  
FEE \_\_\_\_\_

NOBLES COUNTY RECORDER  
LYNN M. WILSON  
507-372-8216